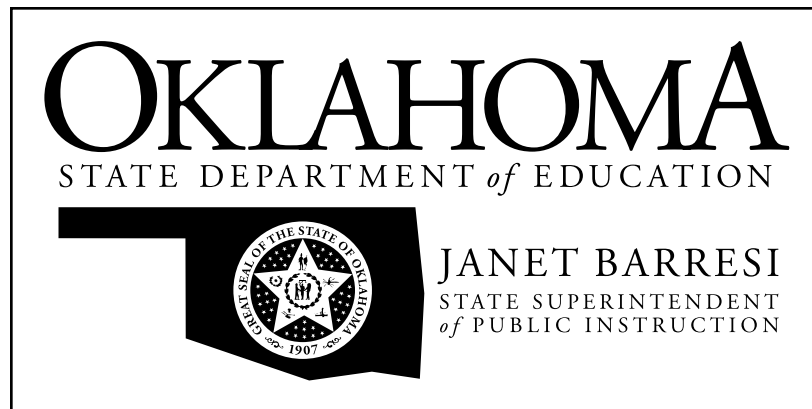


# Oklahoma School Testing Program



Oklahoma Core Curriculum Tests

## 2011–2012 Released Items

Grade 4  
Mathematics

---

**Oklahoma State Department of Education  
Oklahoma City, Oklahoma**

**PEARSON**

Copyright © 2011 by the Oklahoma State Department of Education. All rights reserved. Any other use or reproduction of this document, in whole or in part, requires written permission of the Oklahoma State Department of Education.

# Mathematics

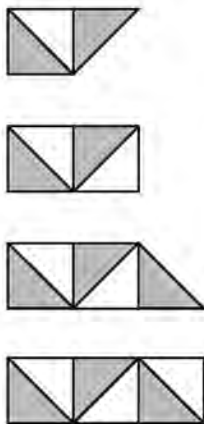


# Directions

Read each question and choose the best answer.

- 1** The first four figures in a pattern are shown below.

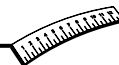
523313\_3



- Each of the figures after the first is formed by adding one triangle to the previous figure.
- Every other triangle is shaded.

If the pattern continues, which is the 5th figure in the pattern?

- A**
- B**
- C**
- D**



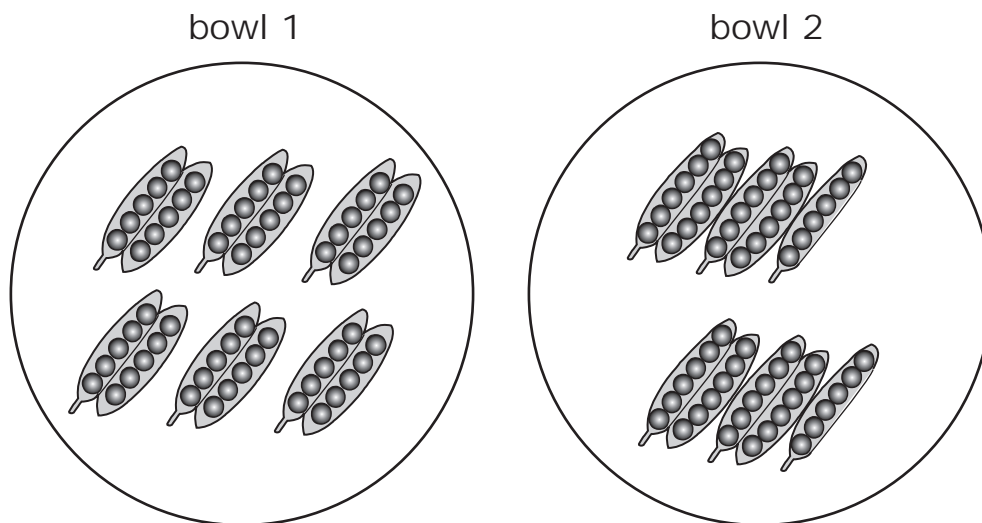
**2** If  $y = 26$ , which equation is true?

523357\_1

- A**  $y + 14 = 40$
- B**  $y + 26 = 40$
- C**  $y - 26 = 40$
- D**  $y - 14 = 40$

**3** Felix put an equal number of peas in two bowls as shown. There are 5 peas in each side of the pea pods in bowl 1. There are 6 peas in each side of the pea pods in bowl 2.

617999\_3



**Which equation shows the arrangement of peas in each bowl?**

- A**  $(2 \times 5) \times 6 = 1 \times (5 \times 6)$
- B**  $(2 \times 5) \times 6 = 2 \times (3 \times 5)$
- C**  $(2 \times 5) \times 6 = 2 \times (5 \times 6)$
- D**  $(2 \times 5) \times 6 = 2 \times (10 \times 12)$



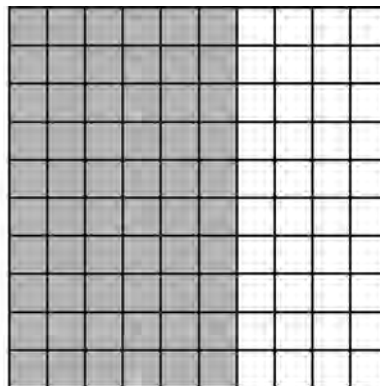
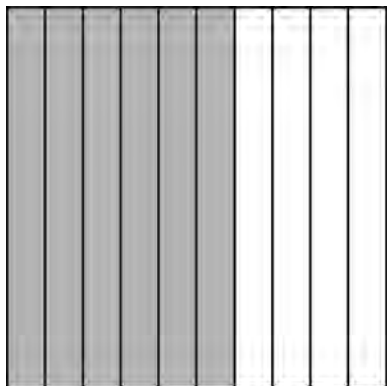
**4** Oliver is buying a tennis racket and tennis balls. The total cost of these items is \$34.84. Which shows \$34.84 in written form?

620195\_2

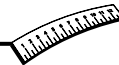
- A** three dollars and eighty-four cents
- B** thirty-four dollars and eighty-four cents
- C** three hundred four dollars and eighty-four cents
- D** three thousand, four hundred and eighty-four dollars

**5** Which number sentence correctly compares the shaded parts of the two large squares?

523653\_2



- A**  $0.6 < 0.06$
- B**  $0.6 = 0.60$
- C**  $0.6 > 0.06$
- D**  $0.6 = 0.06$



6

523654\_2

Tree Heights

Tree	Height (meters)
1	4.10
2	2.86
3	3.49
4	3.02

**Richard's house is 3.2 meters tall. Which of the trees are taller than Richard's house?**

- A** trees 1 and 2
- B** trees 1 and 3
- C** trees 2 and 4
- D** trees 3 and 4

7

522626\_3

**A bird can eat about 3 ounces (oz) of food each day. Which is closest to the total amount of food 52 birds can eat each day?**

- A** 17 oz
- B** 49 oz
- C** 150 oz
- D** 180 oz



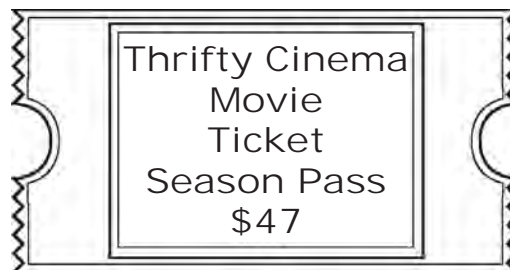
- 8** Bakers made 360 pretzels in one hour. At that rate, how many pretzels will they make in 18 hours?

523519\_4

- A 342
- B 378
- C 5,480
- D 6,480

- 9** Mr. Scurry bought season passes to the Thrifty Cinema for all of his friends. Each pass cost \$47.

523521\_3



Which is closest to the total cost if Mr. Scurry bought 25 season passes?

- A \$72
- B \$329
- C \$1,200
- D \$2,129





**10** A math teacher gives each of her 32 students 25 math problems. If each student turns in every problem, how many problems will the teacher have to grade? 525628\_4

- A 650
- B 700
- C 750
- D 800

**11** Alice planted 63 seeds in 7 rows. Each row had the same number of seeds. This equation can be used to determine the number of seeds Alice planted in each row. 620348\_1

$$63 \div 7 = 9$$

Which of these equations is from the same fact family?

- A  $63 \div 9 = 7$
- B  $63 - 7 = 56$
- C  $63 \times 7 = 441$
- D  $63 \times 9 = 567$



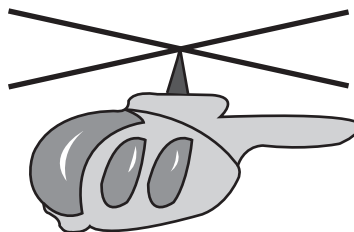
**12** Which picture of a helicopter shows parallel line segments?

619001\_4

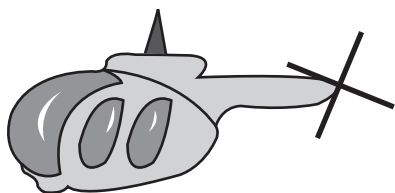
**A**



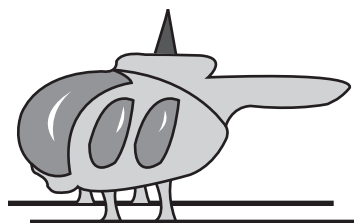
**B**

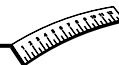


**C**



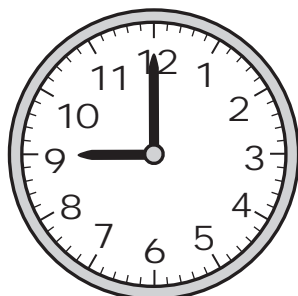
**D**





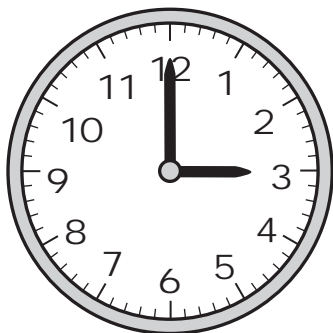
- 13** On the clock below, the hour hand and minute hand form a 90-degree angle.

523394\_4

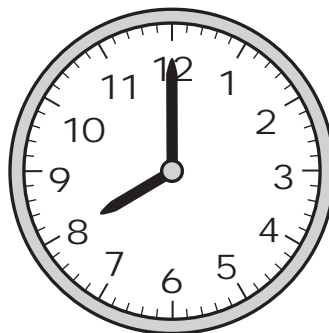


On which clock do the hands form an angle less than 90 degrees?

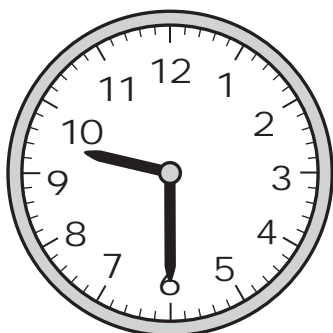
**A**



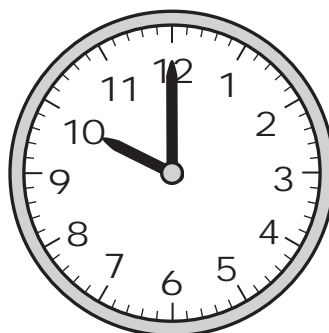
**B**



**C**



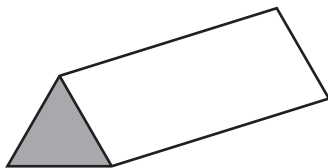
**D**





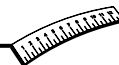
**14** Phil has this toy telescope.

620354\_1



**What is the shape of the shaded part of Phil's telescope?**

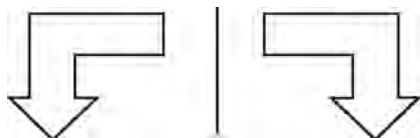
- A** triangle
- B** hexagon
- C** rectangle
- D** parallelogram



**15** Which pair of arrows shows a translation (slide)?

523414\_2

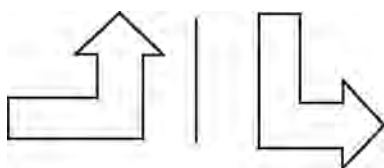
**A**



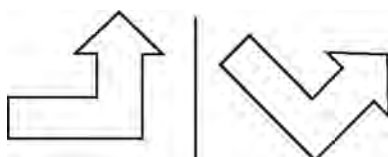
**B**



**C**



**D**





**16** A slice of bread weighs about 1 ounce as shown on the scale.

523442\_4



**Which object also weighs about 1 ounce?**

**A**



a backpack

**B**



a jug of milk

**C**



a mug

**D**



an eraser



**17** Mr. Philips has a mass of 70 kilograms (kg). Which is the most reasonable weight for the mass of a kitten?

619892\_1

- A** 0.7 kg
- B** 7 kg
- C** 70 kg
- D** 700 kg

**18** Which measurement is closest to the length of a cafeteria tray?

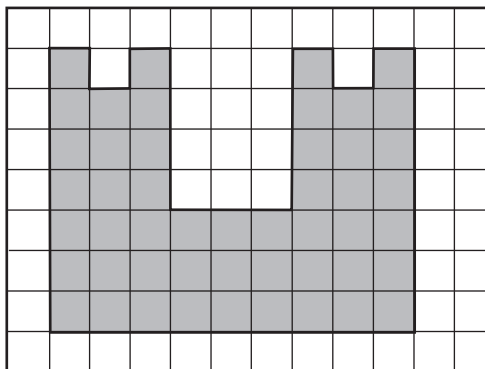
527523\_2

- A** 46.0 mm
- B** 46.0 cm
- C** 4.6 m
- D** 4.6 km



**19** Josie painted a picture of a castle.

619005\_4



Key:  = 1 square unit

**What is the area of the picture Josie painted in square units?**

- A** 27 square units
- B** 44 square units
- C** 45 square units
- D** 49 square units

**20** The baseball game starts at 7:30 P.M. It takes James 55 minutes to drive from his house to the game. What is the latest time he can leave his house to arrive 15 minutes early for the game?

523486\_1

- A** 6:20 P.M.
- B** 6:35 P.M.
- C** 6:50 P.M.
- D** 7:15 P.M.





- 21** Marshall bought a book that cost \$15.37. There was no tax. He gave the clerk \$20.00. How much money should Marshall get back?

522642\_3

- A \$5.63
- B \$5.37
- C \$4.63
- D \$4.37

- 22** The chart shows information about the number of items in a snack booth.

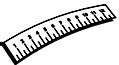
523729\_4

Snack Booth

Items	Number of Items
chocolate bars	
pickles	
chip bags	
soft drinks	
water bottles	

Six of one type of item were added to the items in the snack booth to make a total of 15. For which type of item does the graph show 6 less than 15?

- A pickles
- B chip bags
- C soft drinks
- D water bottles



- 23** Rudy and Sandy played two games. Sandy won the first game 4 to 3. Rudy won the second game 4 to 3. Which table shows this information correctly?

**A** Scores For 2 Games

	Rudy	Sandy	Game 2
Game 1	3	4	7

**B** Scores For 2 Games

	Rudy	Sandy
Game 1	3	4
Game 2	4	3

**C** Scores For 2 Games

	Game 2	Sandy
Game 1	3	4
Rudy	4	3

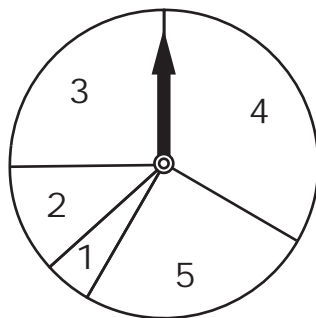
**D** Scores For 2 Games

	Score
Game 1	3
Game 2	4
Rudy	3
Sandy	7



**24** Shawn made this spinner for a game.

620486\_3



**On which two numbers is the arrow equally likely to stop?**

- A** 1 and 2
- B** 2 and 3
- C** 3 and 5
- D** 4 and 5

**25** Tina kept score for a frog-jumping contest. The lengths of the frog jumps, in feet, are shown in this list.

620070\_3

**7, 8, 11, 13, 14, 15, 15, 16, 18**

**What is the median of the frog-jump lengths?**

- A** 11 feet
- B** 13 feet
- C** 14 feet
- D** 15 feet



