



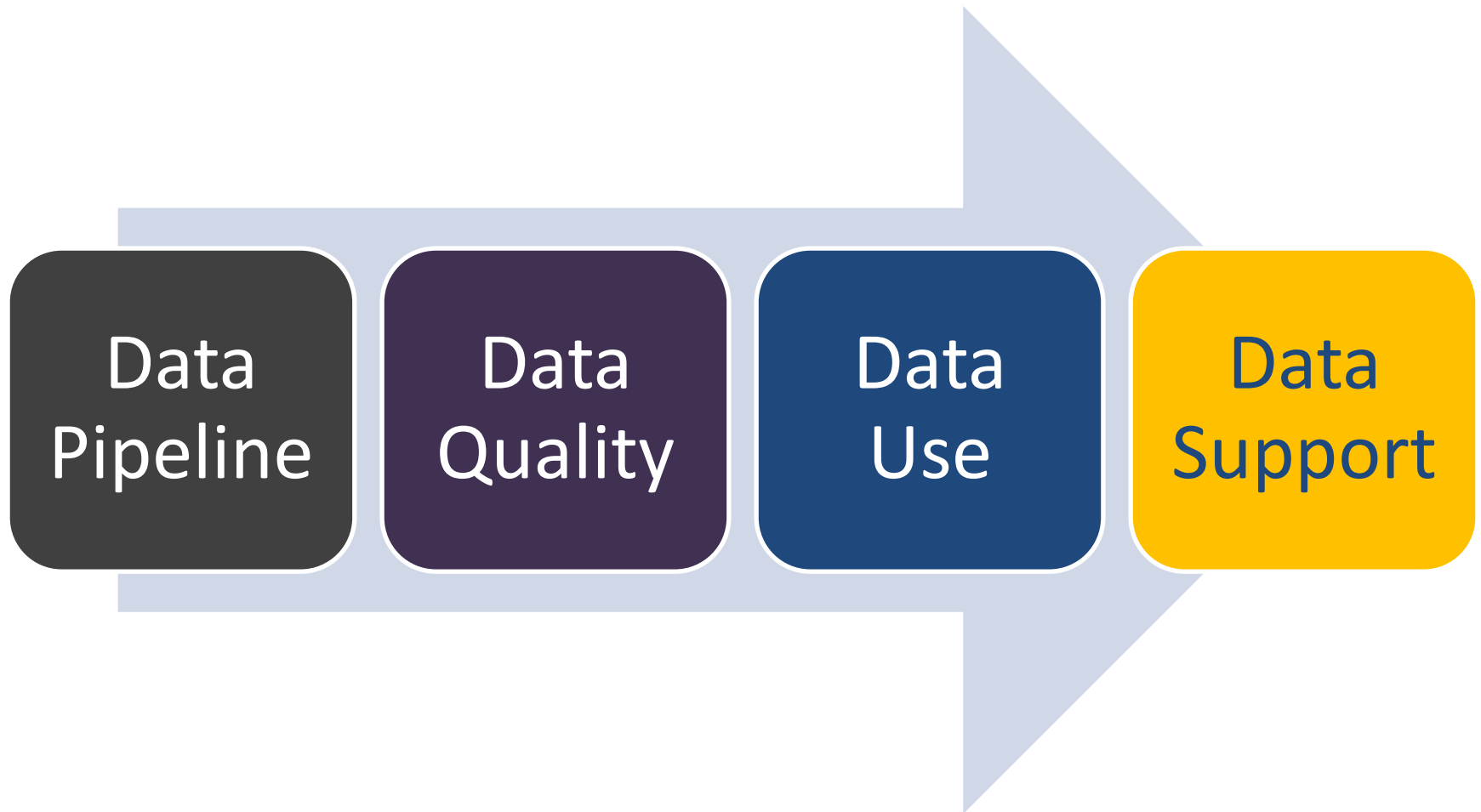
# **Spring 2014 Updates**

## **OSDE Office of Student Information**

Autumn Daves, Data Governance and  
Technical Project Coordinator

Susan Pinson, SLDS District Data and  
PD Liaison

# Student Information Framework



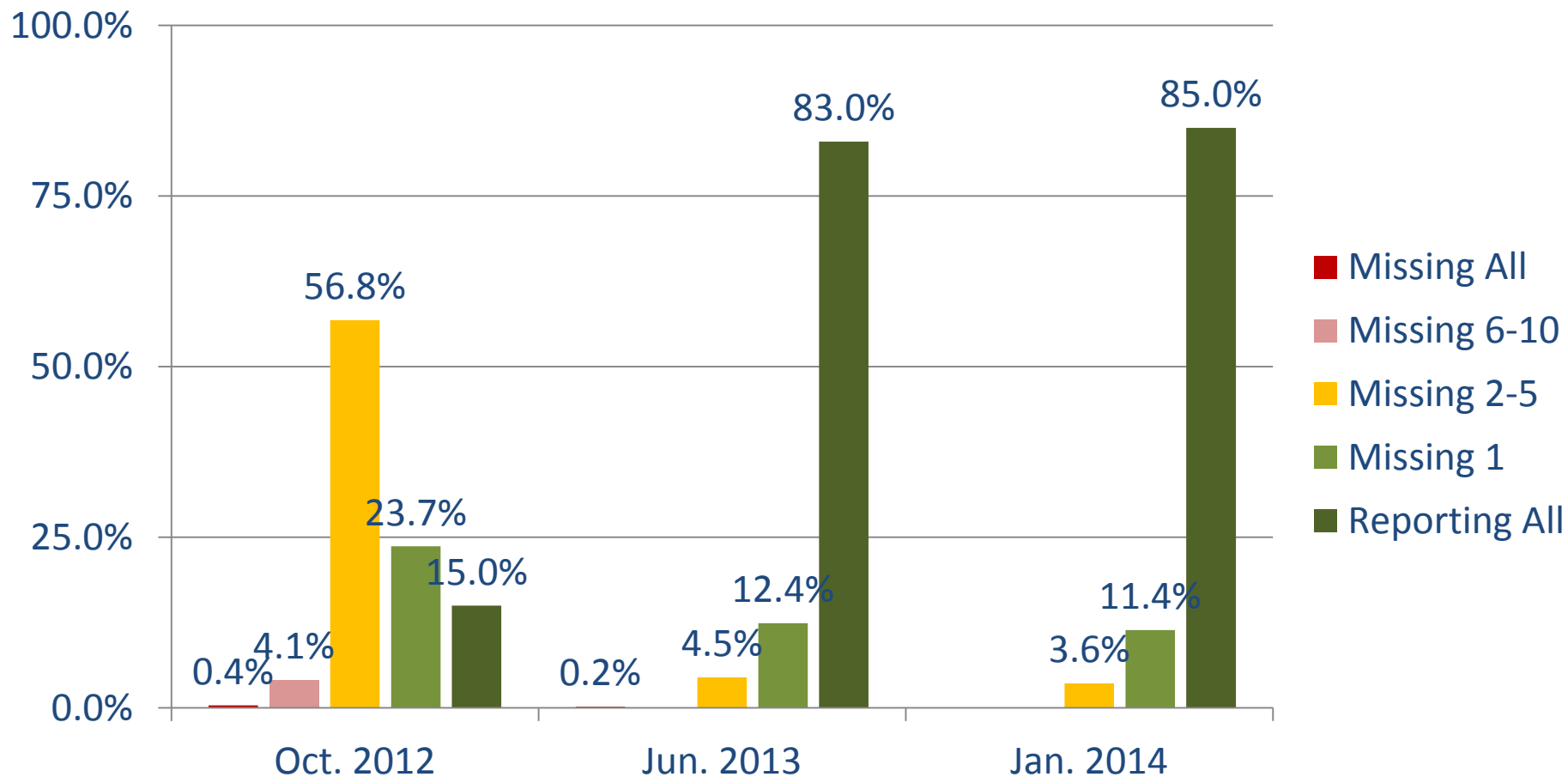
# Data Pipeline Survey (Fall 2012) and Report (January 2013)



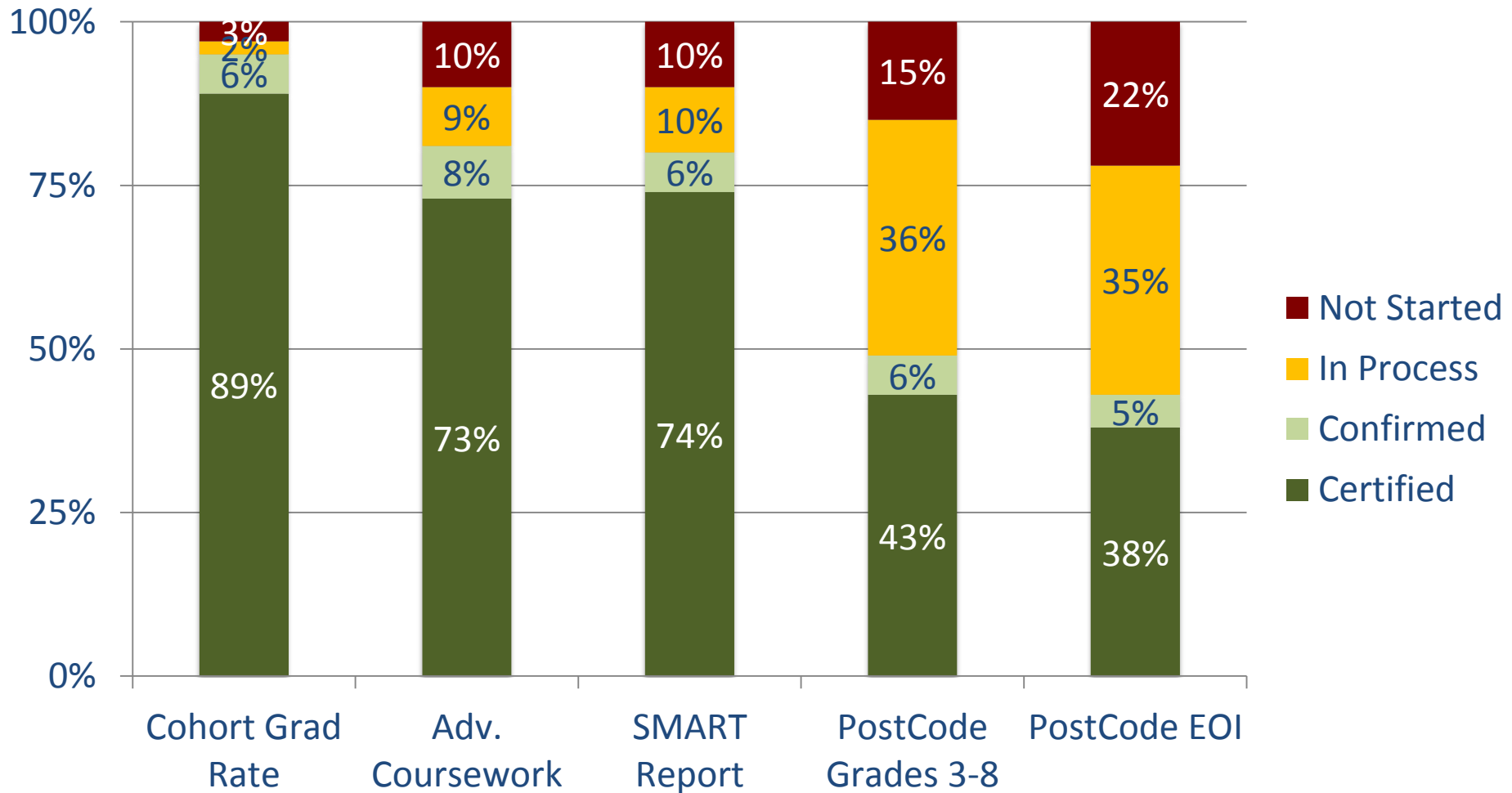
## Recommendations based on districts responses:

- Better processes and documentation
- Better communication: specifically about changes to data requirements, new tools, and upcoming plans
- Fewer last minute changes to collections
- Better prioritization and better pacing
- More transparency and engagement
- Clearer definition of roles and responsibilities

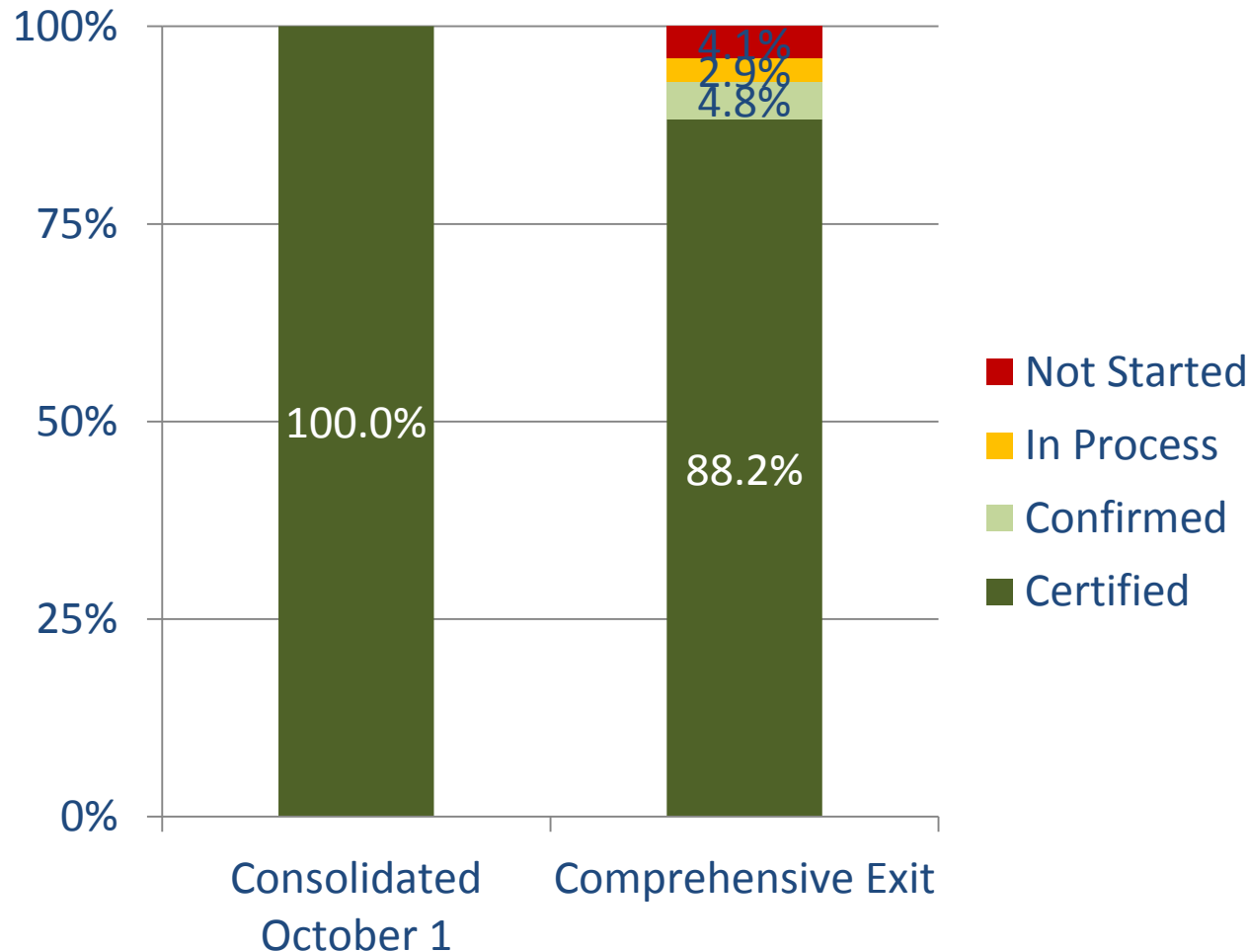
# Progress to Date: Strengthening the Data Pipeline



# Spring 2013 Data Certification

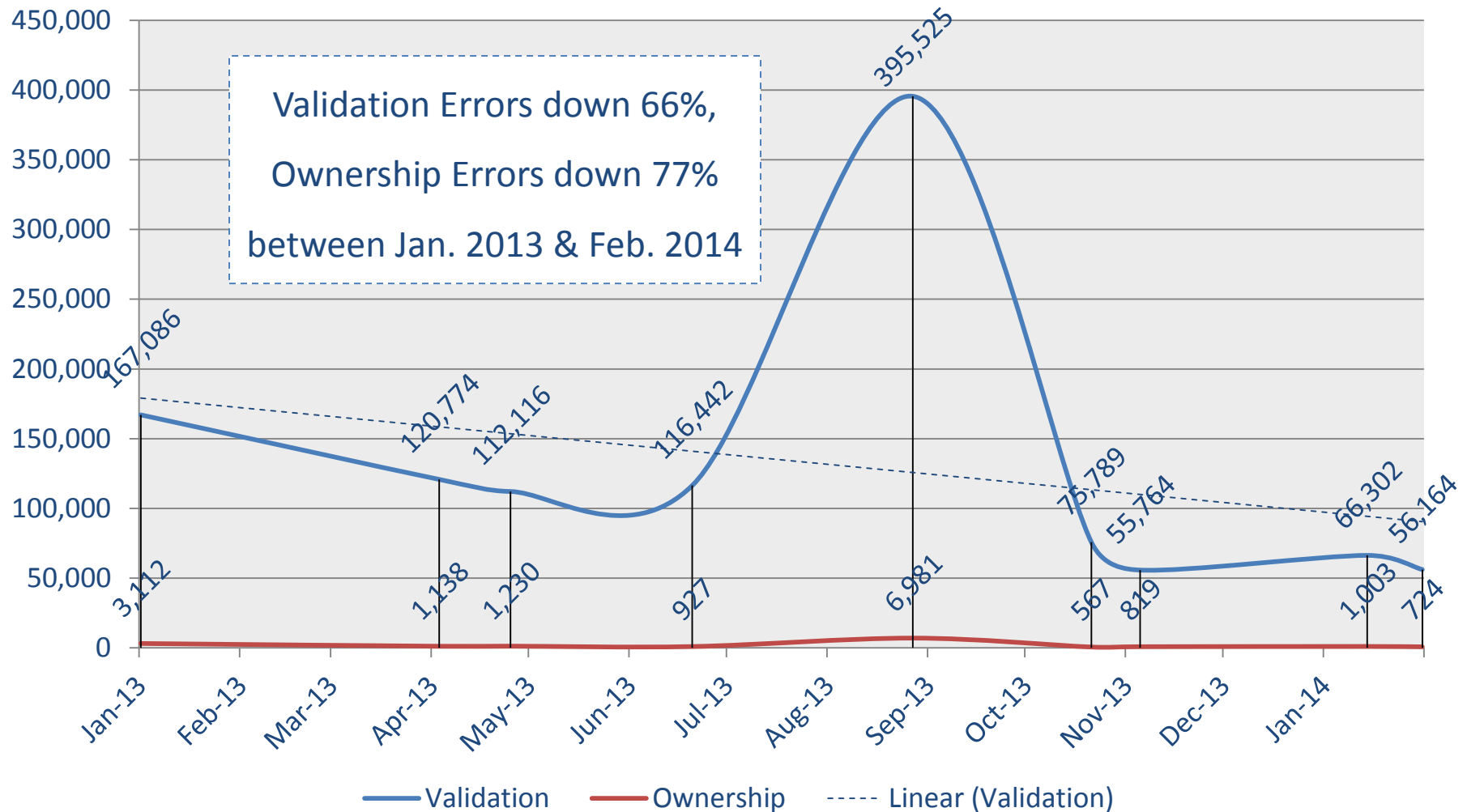


# Fall 2013 Data Certification

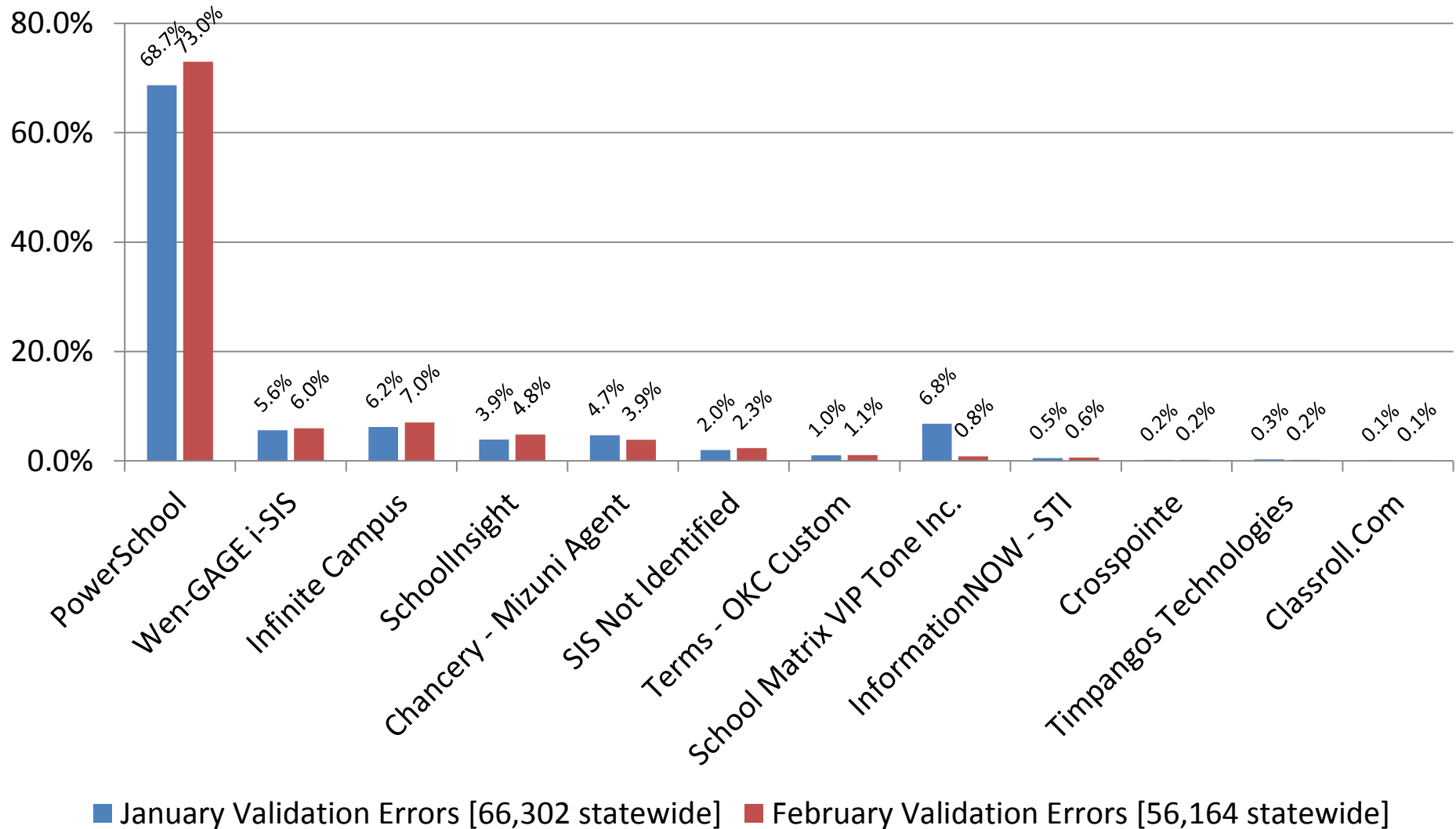


- Over 690,000 students enrolled in Oklahoma Public Schools during the fall of 2013. The Wave Consolidated October 1 Count was 99.92% error-free in terms of district “ownership” of those students.

# Significant Drop in Validation and Ownership Errors since Jan. 2013



# 2014 Data Validation Errors by Local SIS Vendor





# Data Correction and Certification Reports

Reports Detail	Upcoming Training	District Progress	Window Open	Due Date
<a href="#">Drop Out Report Submission [1st Quarter]</a>		98% - <a href="#">detail</a>	Jan. 1 	Feb. 7
<a href="#">Grades 3-8 Assessment Pre-Code Submission</a>	<a href="#">online</a>	97% - <a href="#">detail</a>	Jan. 1 	Feb. 6
<a href="#">Drop Out Report Submission [2nd Quarter]</a>	<a href="#">register</a>	42% - <a href="#">detail</a>	Feb. 1 	Apr. 7
<a href="#">Historical Adjusted Graduation Cohort Certification</a>	<a href="#">register</a>	38% - <a href="#">detail</a>	Jan. 1 	May 28
<a href="#">TLE Roster Verification Data Clean-Up (Tech Leads)</a>	<a href="#">online</a>	N/A	Mar. 3 	Apr. 1
<a href="#">Battelle TLE Roster Verification (Teachers/Principals)</a>	<a href="#">online</a>	N/A	Apr. 1	June 6
<a href="#">RSA End-of-Year Report Submission</a>	<a href="#">online</a>	N/A	--	--
<a href="#">Annual Statistical Report Certification</a>	<a href="#">register</a>	N/A	May 1	EOY*
<a href="#">SMART Report Certification</a>	<a href="#">register</a>	N/A	May 1	EOY*
<a href="#">Advanced Coursework Review of Eligible Courses</a>	<a href="#">online</a>	N/A	Apr. 1	July 3
<a href="#">Advanced Coursework Certification</a>	<a href="#">register</a>	N/A	May 1	July 3
<a href="#">Grades 3-8 &amp; EOI Assessment Post-Code Correction</a>	<a href="#">online</a>	N/A	June 2	July 3
<a href="#">OAAP Testing Data Correction</a>	<a href="#">online</a>	N/A	June 12	July 14
<a href="#">A-F Calculations Review</a>	<a href="#">register</a>	N/A	Aug. 18	Aug. 29
<a href="#">RSA Final Report Submission</a>	<a href="#">online</a>	N/A	--	--

\*End-of Year (EOY) = The ASR and SMART Reports close within two weeks of the end of the school year

## Timelines and Training Dates

- All Training Dates for Spring 2014 
- Key Dates Timeline for Data Correction and Certification 

## Overall Progress Status, Error Rates

- [Data Submission, Correction and Certification Progress Status](#)
- [Wave and Validation Error Rates](#)

# Regarding Deadlines

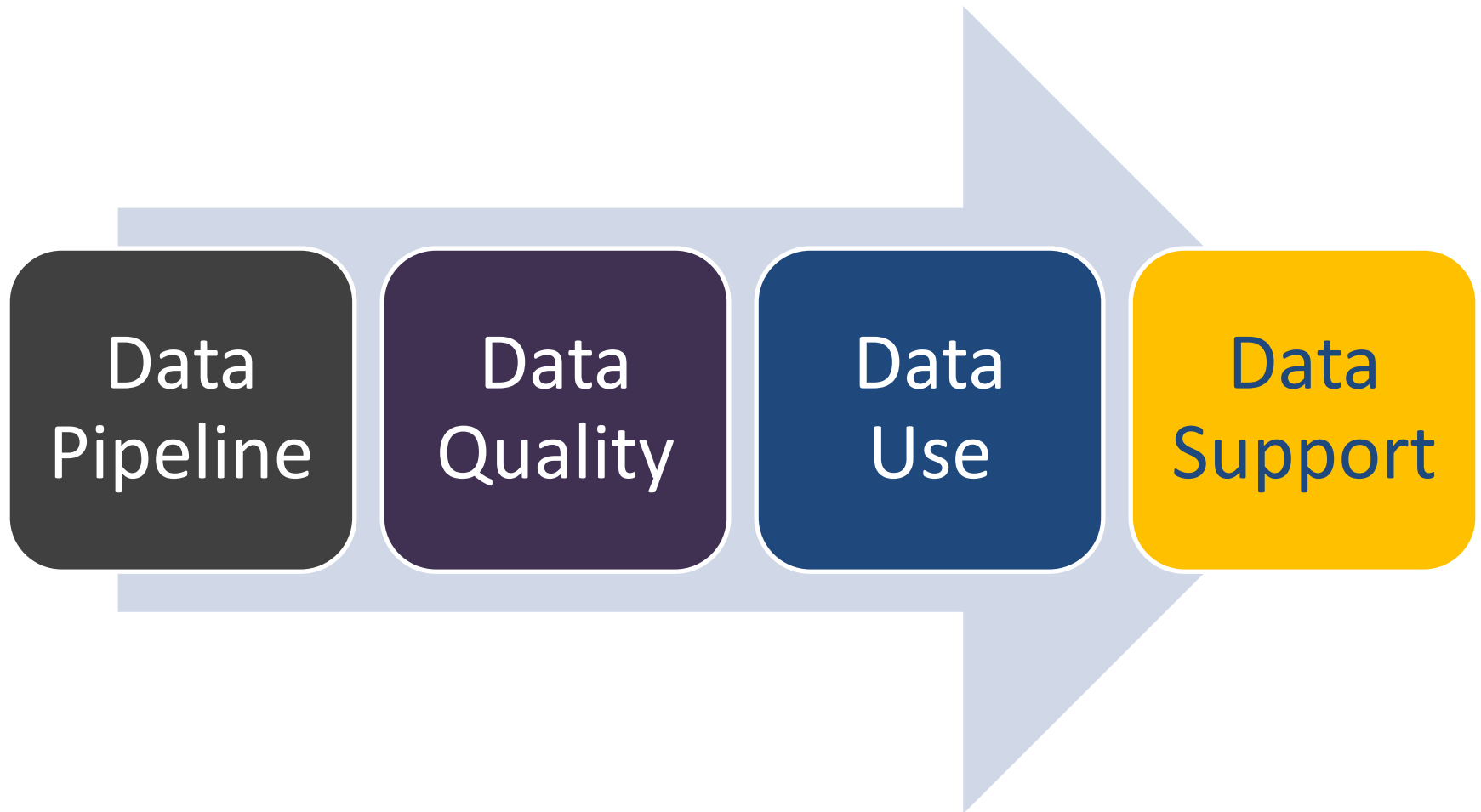


To meet the Aug. 28 deadline for the 2014 report card, SDE will use the data ***as is*** at the close of each data certification project.

Data from the data certification projects will ***not*** be corrected during the final calculation verification process in August.

Districts will need to correct data, clear validation errors, avail themselves of all training opportunities, and call the SDE for support ***before*** the data certification projects close.

# Student Information Framework

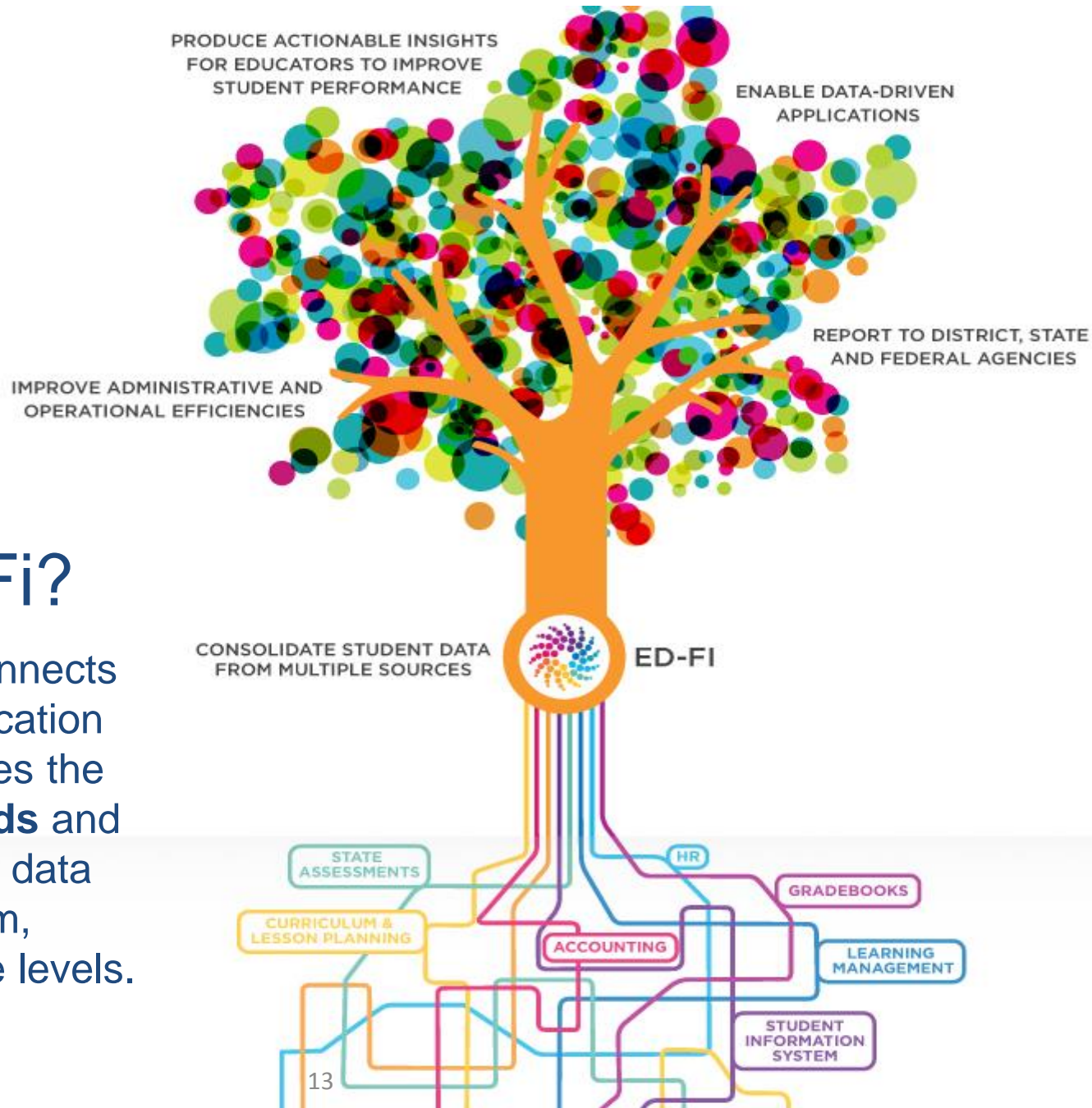


# Spring 2014 Data Correction and Certification Reports: Weekly Snapshot of Key Dates and Training Opportunities (Draft 02/04/14)

Month	Week	Grades 3-8 Pre-Code	Drop Out Report: 1st Quarter	Drop Out Report: 2nd Quarter	Adjusted Grad. Cohort	Roster Data Clean Up and Verification	Annual Statistical Report (ASR)	SMART Report	Eligible Course Review & Adv. Course-work Cel	OCCT/ EOI Correction Window	OAAP Correction Window	CTE Courses & AP Exam Review	ACT/SAT Review	A-F Report Card Calculation Review	RSA End-of-Year Report
January	Week 2	Training													
	Week 3	Training													
	Week 4	Training													
February	Week 1	Close	Close		Open										
	Week 2				Training										
	Week 3													Training	
	Week 4				Training										
March	Week 1					Clean-Up									
	Week 2				Training	Training								Training	
	Week 4					Training									
	Week 5				Training	Open			Review					Training	
April	Week 1			Close		Training									
	Week 2				Training	Training			Training						
	Week 3					Training								Training	
	Week 4				Training	Training			Training						
May	Week 1					Training	Open	Open	Open						
	Week 2				Training	Training		Training						Training	
	Week 3				Training	Training		Training							
	Week 4				Close	Training									
June	Week 1					Close		Training	Training	Open					
	Week 2						Close	Close	Training	Training	Open				
	Week 3								Training	Training	Training				
	Week 4								Training	Training	Training				
	Week 5								Close	Close	Training				
July	Week 1										Training				
	Week 2										Close				
	Week 4											Training	Training		
August	Week 3													Open	
	Week 4													Close	

# What is Ed-Fi?

The Ed-Fi solution connects data through an application framework that enables the building of **dashboards** and **applications** unifying data the student, classroom, district/LEA, and state levels.

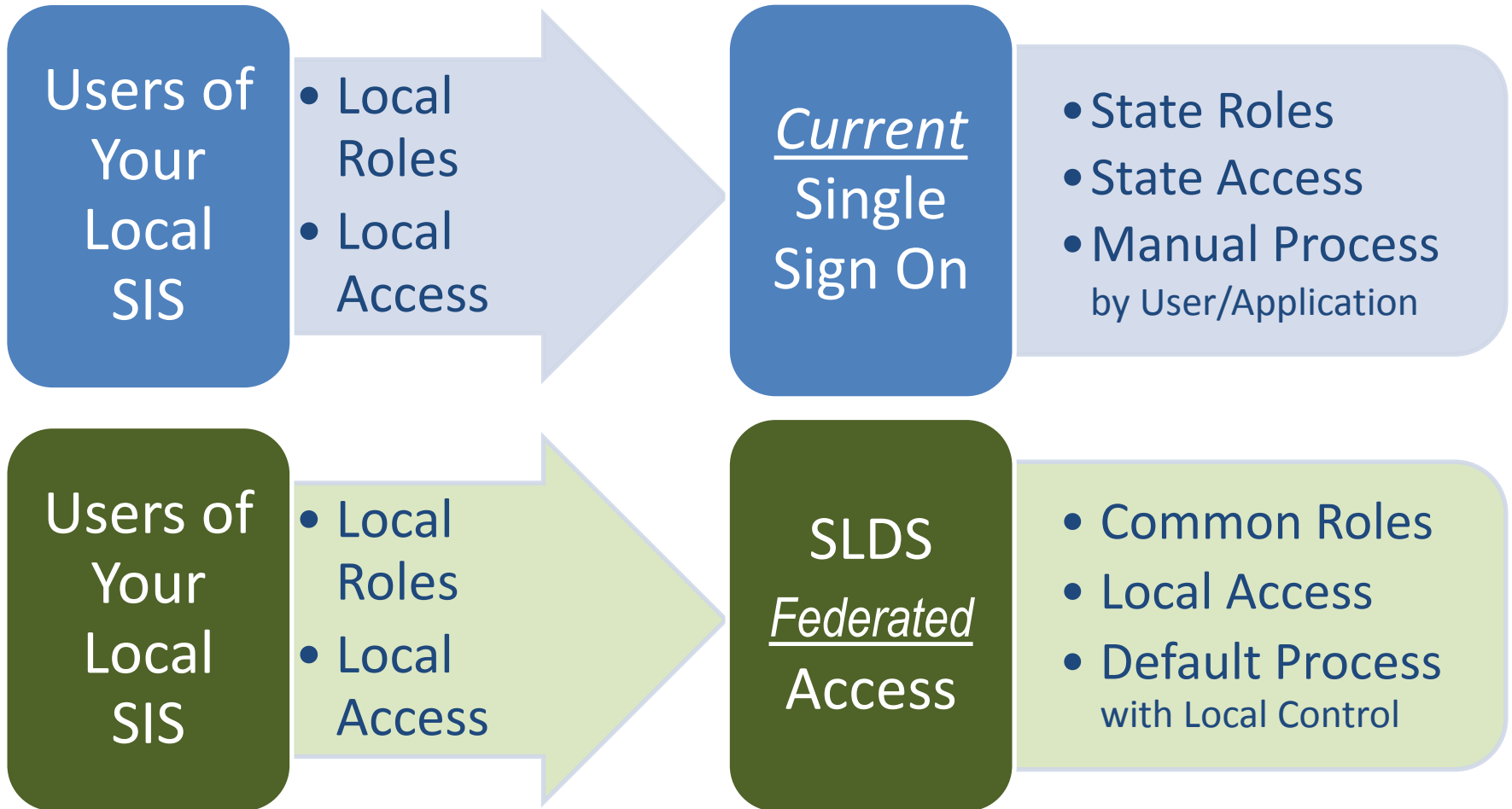


# Ed-Fi Dashboard Pilot Timeline



- **July 2013:** Ed-Fi Pilot Launched
- **Summer 2013:** Requirements Gathering
- **February 2014:** Phase 1 Dashboard will be installed and ready for pilots testing
- **2014-2015 School Year:** Phase 2+ expanded data, pilots and dashboards (including Early Childhood/Kindergarten Readiness/RSA pilot)
- **2015-2016 School Year:** Available Statewide

# SLDS Federated Access



# OSI Contact Information



**John Kraman**, Executive Director for Student Information  
[John.kraman@sde.ok.gov](mailto:John.kraman@sde.ok.gov)

**Susan Pinson**, SLDS District Data and PD Liaison  
[susan.pinson@sde.ok.gov](mailto:susan.pinson@sde.ok.gov)

**Duane Brown**, SDE Data Coordinator  
[duane.brown@sde.ok.gov](mailto:duane.brown@sde.ok.gov)

**Autumn Daves**, Data Governance/Technical Project Coordinator  
[autumn.daves@sde.ok.gov](mailto:autumn.daves@sde.ok.gov)

Follow us on Twitter  @OSDE\_SIS