

Counselors **SPEAK:
Connecting
Carefully, Candidly
and Courageously**

July 31, 2020



OKLAHOMA
Education



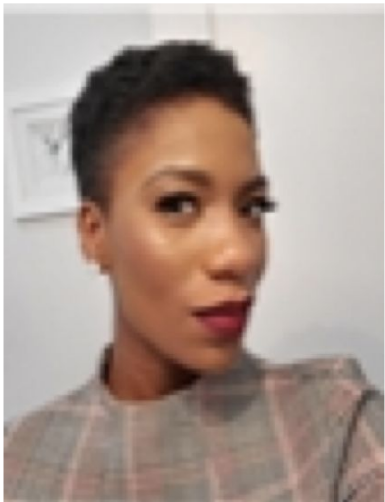
OSDE Student Support Panel



Beth Whittle,
M.Ed., LPC
Executive Director of
Counseling



Petra Woodard,
M.Ed.
Executive Director of
Academic
Counseling



Tosin Akande, MPH
Bullying Prevention
Specialist



Shelly Ellis, Ph.D.
Deputy Supt. of
Student
Support

OSDE Student Support Panel - 2

Add photo and title here

Why Are We Here?

To provide Oklahoma Counselors a forum to:

- **S**hare thoughts and concerns in a safe space
- **P**rocess possible causes and solutions
- **E**ducate, equip, and empower one another
- **A**ct, plan and implement
- **K**eeP the conversation going

What's the Conversation?

Best Practices for Counselors in Suicide, Substance Abuse
and Child Abuse Prevention