

Early Childhood Outcomes: Fact Sheet for Families

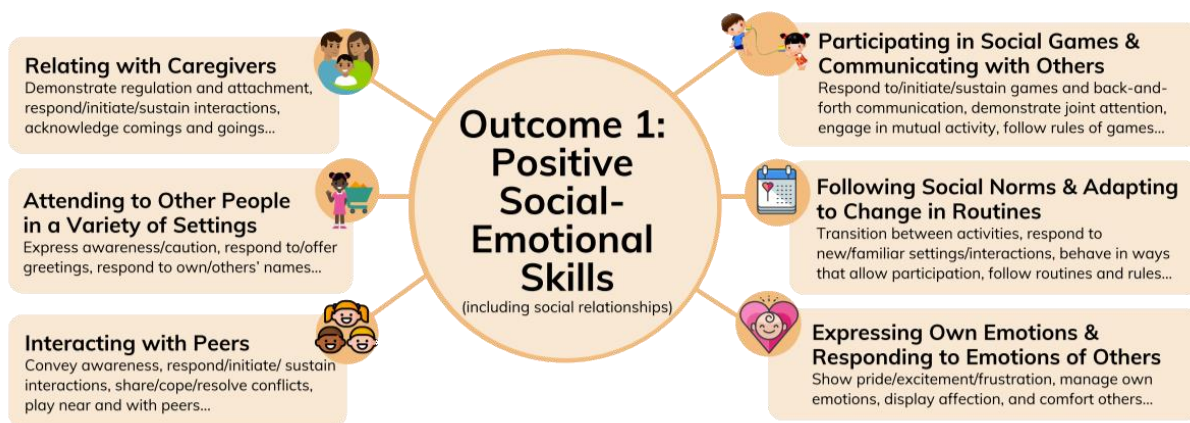
What are Early Childhood Outcomes (ECOs)?

Early Childhood Outcomes (ECOs) are one way school districts and Individualized Education Program (IEP) teams measure each child's progress in three areas of overall development. The information gathered from ECOs is designed to improve programs and support three-through five-year-old children's progress.

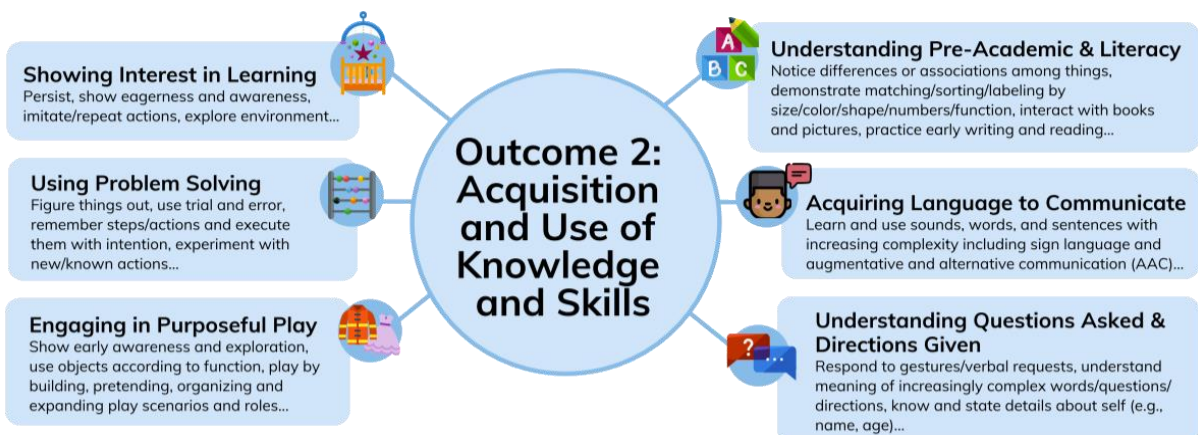
ECOs apply to all Oklahoma children receiving early childhood special education services in any setting or environment. **All preschool children receiving six months of special education services anywhere in Oklahoma will receive entry and exit ECO ratings.**

What are the three ECO areas?

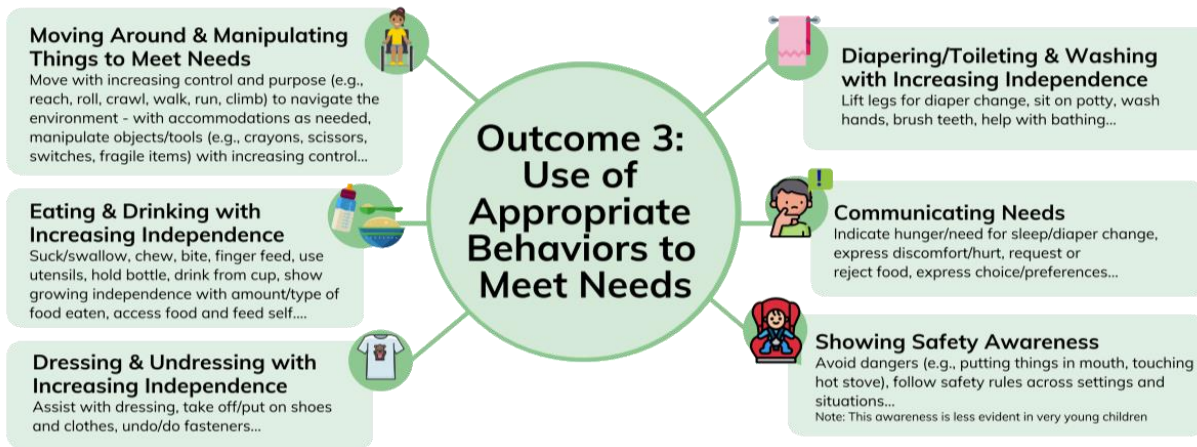
Outcome 1: Have positive social-emotional skills.



Outcome 2: Acquisition and use of knowledge and skills.



Outcome 3: Use of appropriate behaviors to meet their needs.



How can I be a part of the ECO process?

Share your observations and knowledge of your child, including:

- how your child responds and plays with family and friends,
- how your child learns and does new things during play, and
- how your child is able to get what s/he needs at home or in other settings with the IEP team.

It may be helpful to make notes of your child's strengths and needs in each outcome area. You know your child best, so you are an important source of information and an important part of the team!

When is this information collected?

The IEP team collects and discusses entry ECO data during the initial IEP process and exit data when a child exits preschool special education services with at least six months of services. Exit ECOs are completed when the first of three things happen: 1) student exits preschool, 2) child is no longer eligible for special education during preschool, or 3) child's 6th birthday occurs while s/he is in preschool.

What happens to the information collected?

This data shows us how our early childhood programs make a difference for the children and families we serve, both at the local and state level. The Office of Special Education Services (SES) at the Oklahoma State Department of Education (OSDE) collects ECO data state-wide and submits this data to the federal Office of Special Education Programs (OSEP). This information is collected with that from other children and reported as a group. Your child's name and outcomes are not attached to the reported information.

Who do I contact if I have additional questions about ECOs?

You may contact your child's school, your school district's special education department, or OSDE-SES at 405-521-3351.

