



OWN YOUR VOYAGE

2024-2025

INTERACTIVE GRADUATION PLANNING GUIDE



OKLAHOMA
Education



CONTENTS

How to Use This Document	3
Vision of Our Graduate	4
Portrait of a Graduate	5
Reflective Questions for Students	7
Graduation Pathways and High Demand Industries	9
Oklahoma Career Pathways	11
Oklahoma Course Matrix	30
College and Career Ready Assessments	40
Oklahoma's 100 Critical Occupations	42



HOW TO USE THIS GUIDE TO INFORM YOUR GRADUATION PLAN

1

REFLECT ON RESULTS FROM YOUR CAREER INTEREST ASSESSMENTS

Now is a good time to reflect on the results of your interest assessment. These results should provide insight on which careers are most aligned with your interests. Use these results to navigate course options and programs in this document.

2

FIND A CAREER PATHWAY THAT BEST FITS YOUR INTEREST

Once you find your interest assessment results, you are ready to choose a Career Pathway to explore. The goal of a Career Pathway is to help connect your personal interests to career interests. Career Pathways represent different categories of careers based on similarities. These pathways will help you narrow down your career choices so you can choose a pathway that suits you.

3

FIND A COURSE PATHWAY OF INTEREST

Next, you are ready to choose your Course Pathway. A Course Pathway will act as a plan of study and list courses that you plan to take to prepare for your next step after high school. Your pathway will consist of all minimum required graduation courses with opportunities for you to choose relevant courses to meet your individual needs. Be advised that your district may have additional requirements as well as assessments.

4

UPDATE YOUR INDIVIDUAL CAREER ACADEMIC PLAN

Finally, be sure to update your Individual Career Academic Plan to reflect your latest goals and plans to meet those goals.



VISION OF OUR GRADUATE

ALL STUDENTS WILL GRADUATE “COLLEGE AND CAREER READY” WHICH MEANS THEY WILL:

- Understand how their unique strengths and interests align with a wide variety of future opportunities.
- Prepare and maintain a personal plan for goal attainment that provides flexibility based on individual experiences.
- Develop a general understanding of how the problem-solving process has been applied to innovate, invent, design, and build products and systems in a variety of environments/industries.
- Effectively navigate both the world of higher education and employment to support a transition to adulthood.
- Possess confidence in their level of mastery of the following in relation to their personal and career goals:

KNOWLEDGE

- Core subject areas
- Global, civic, environmental, financial, health, and media literacy
- Career
- Technological literacy

SKILLS

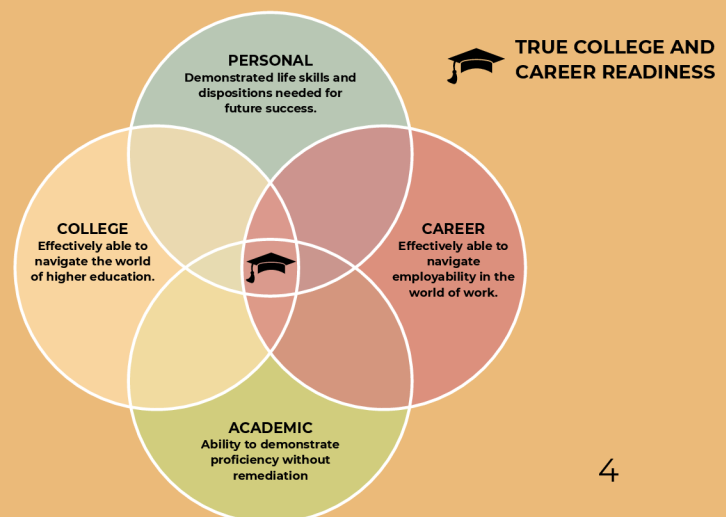
- Academic
- Career-specific
- Life
- Interpersonal
- Technology

DISPOSITION

- Demonstrate citizenship through good work ethic, being a good person, and accepting personal responsibility
- Communicate and interact effectively
- Analyze ideas, data and textual evidence to draw conclusions and solve problems
- Collaborate with others through interdependence, flexibility and compromise
- Demonstrate creativity by generating original ideas

WE SUPPORT THE VISION OF OUR GRADUATE BY:

- Providing developmentally appropriate opportunities to learn and demonstrate required/desired knowledge, skills and dispositions
- Guiding all students through the academic and career planning process
- Supporting students as they strive to master required and desired coursework
- Encouraging active engagement in extra-curricular activities and career/service-learning programs
- Collaborating with partners to provide exposure to a wide range of industries and careers
- Aligning curriculum to a variety of post-secondary opportunities.





OKLAHOMA'S PORTRAIT OF A GRADUATE

CRITICAL THINKING

Graduates will exercise critical thinking skills to address the nature of a problem and propose creative solutions independently and collaboratively.

CITIZENSHIP

Graduates will act as productive citizens who serve in the community to improve the quality of life for their local, national, and global communities.

ETHICS

Graduates will demonstrate ethical leadership through effective decision-making and self-management by understanding their personal strengths and weaknesses.

CAREER DEVELOPMENT

Graduates will develop and manage a clearly articulated post-secondary plan that is aligned with their academic and/or career goals, and personal passions.

INTEGRITY

Graduates will exhibit a strong sense of dignity and respect for all people while leading with respect for others and themselves.

TEAMWORK

Graduates will collaborate effectively with others to build knowledge, identify issues, seek information, and consider various perspectives to address challenges impacting their communities.

ACADEMIC FOUNDATION

Graduates will be able to exhibit a mastery of academic skills for the advancement of education and the development of character. They will exhibit training in basic study and research skills to further lifelong creative learning while exercising intellectual integrity and honesty.

COMMUNICATIONS

Graduates will be able to express thoughts and articulate ideas through verbal, non-verbal, written, and technological means.



OKLAHOMA'S PORTRAIT OF A GRADUATE

HEALTH & ENVIRONMENT

Graduates will have respect for themselves and others, build self-confidence, pursue their passions, and become lifelong learners.

TECHNICAL LITERACY AND APPLICATION

Graduates will leverage traditional and emerging technology to consume, create, communicate, and connect while practicing responsible citizenship in an increasingly digital world.

FINANCIAL WELL-BEING

Graduates will exhibit mastery in financial skills and be able to demonstrate the use of critical thinking, math skills and technology as tools to analyze financial reports/scenarios.

ORGANIZATIONAL & GLOBAL SYSTEMS

Graduates will be able to engage with local and global issues while exercising discernment between quality data and research.

INNOVATION

Graduates will be able to create original work that demonstrates thoughtful and reflective approaches while providing original solutions to problems, and will use obstacles and setbacks as opportunities to learn, reflect, and improve.





REFLECTIVE QUESTIONS FOR STUDENTS

WHO AM I?

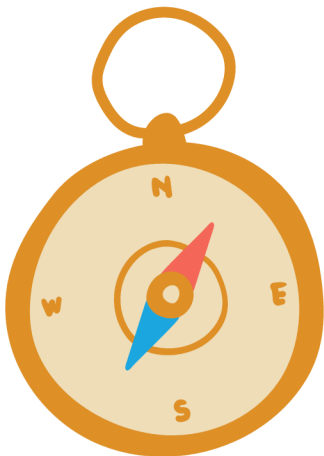
(THE MIRROR)



- What interests me?
- What are my strongest skills?
- Which dispositions for success do I need to further develop based on my last report card?
- What academic, career, and/or life skills would I like to develop before I graduate?
- What is my preferred learning style and/or environment?

WHAT DO I WANT TO DO?

(THE COMPASS)



- Which Course Pathway am I most interested in and why?
- Are there any specific career specialties/pathways that are of interest to me?
- What type of training do I need to support my post-secondary goals?
- Will this career choice support what I want for my financial future?
- Which courses can I take to continue to explore my interests?
- What jobs would I like to shadow and when will I do that?



REFLECTIVE QUESTIONS FOR STUDENTS

HOW DO I GET THERE?

(THE MAP)

- What do I want to get out of my ICAP?
- What schools offer a related degree/major?
- What course credits will I need for college admissions? For example:
 - What specific math courses are required?
 - Which specific science courses are required?
 - Do I have to take a world language?
 - Do I have to take fine arts classes?
- What is needed for my admissions application to be considered competitive?
- What ACT scores are required for admission and/or merit-based aid?
- In what areas will I pursue more rigorous coursework to support my strengths and/or areas of interest? Will I take AP Courses, Early College High School Program, Concurrent Enrollment, a Career Technology program, etc.?
- Do I want a college-level experience to further explore a major or career? If so, which ones best support my post-secondary plans?
- Will my credits transfer to the school(s) I want to attend?



- Which extra-curricular activities will support my interests?
- What work-based learning experiences will help me develop desired skills?
- What adults in my life could act as a mentor as I continue to explore opportunities for my future?
- What credentials are needed to work in my field of interest?

FINANCIAL PLANNING QUESTIONS

- How can my family be prepared to complete the FAFSA during my senior year of high school?
- How much do I anticipate that my post-high school education might cost and how will I pay for it?
- Will I qualify for need-based financial aid and/or merit scholarships?
- Has my family considered Oklahoma's Promise eligibility?
- Will I have any savings from employment, etc. during high school?
- Do I know how to find/sustain employment if needed to help fund my education?

GO!

(THE VEHICLE)

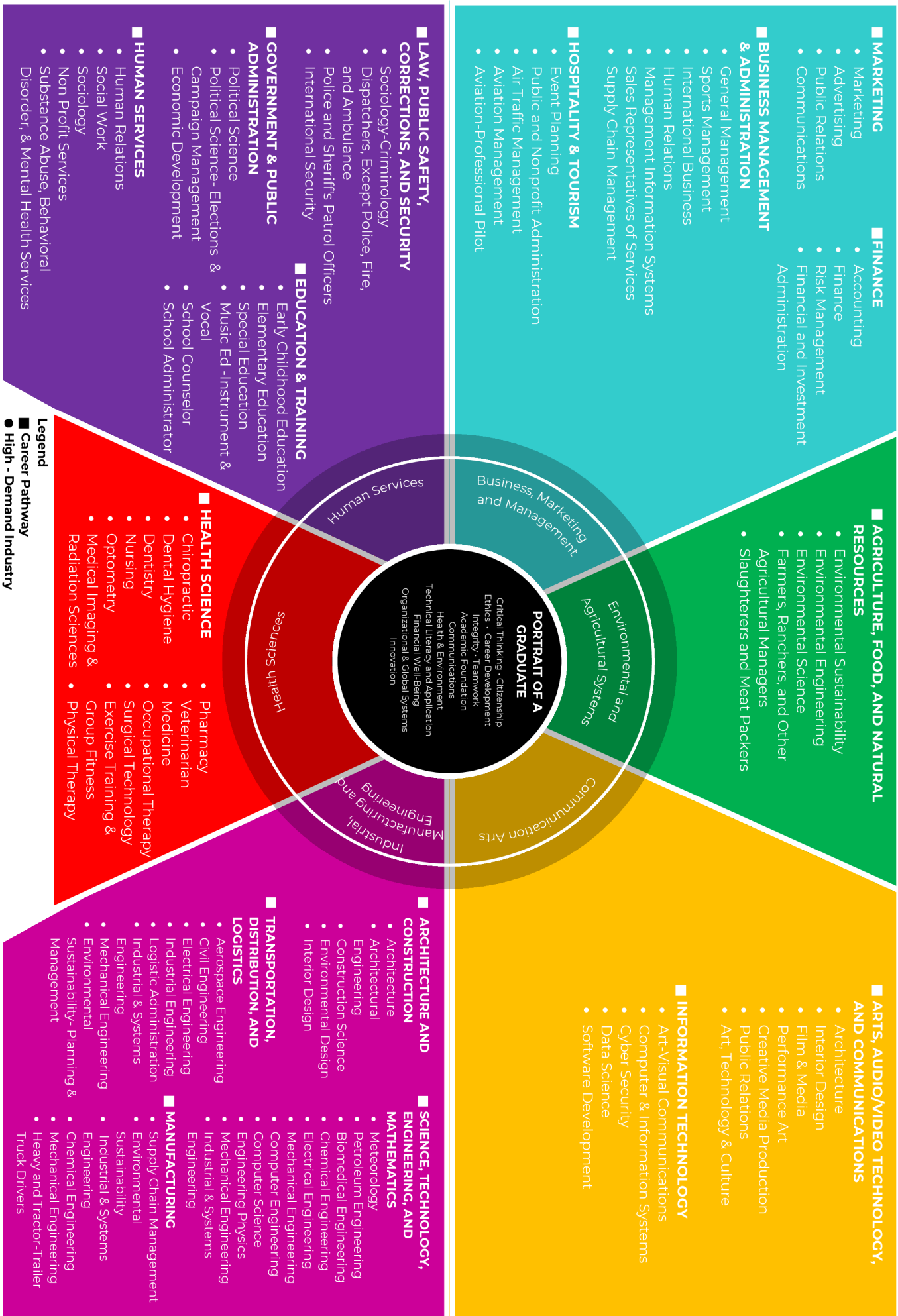
Students are an active participant in their Academic & Career Planning Process. Students are encouraged to reflect often on their choices and update their plans, sometimes more than yearly. This will include:

- Reviewing, adapting or modifying course selections
- Reviewing, adapting or modifying personal goals
- Conferencing with counselors and/or parents





GRADUATION PATHWAYS & HIGH DEMAND INDUSTRIES





GRADUATION PATHWAYS & HIGH DEMAND INDUSTRIES

The Graduation process should be student-centered and designed with a student's interest, skills, and development in mind. The Oklahoma State Department of Education has developed a new graduation framework designed to support students from classroom to career. To complete the graduation process students will complete the following steps:

STEP 1 - Students will complete required curriculum to build a foundation of 21st-century skills.

STEP 2 - Students will demonstrate readiness as a part of their graduation plan by earning a state-defined career readiness pathway. Students will choose between 6 career fields to guide their exploration and preparation.

STEP 3 - Students will choose one of the 16 National Pathways to explore with intentionality. Each pathway will be carefully designed to include relevant coursework to prepare students for all careers represented.

The Oklahoma State Department of Education Career and Academic Advising chart, on the reverse side, graphically depicts the organizing framework of a student's graduation process. This includes a foundation of knowledge and skills, career pathways, and high-demand jobs that the school advisors will use to guide students in their graduation process.

PORTRAIT OF A GRADUATE

Foundation Knowledge and Skills, located in the centermost circle, represent the base from which to build work.

CAREER PATHWAYS

Career Pathways, which are identified by the bold bullets, represent a grouping of occupations and broad industries into a national classification of 16 clusters that are based upon common knowledge and skills. Career clusters include hundreds of occupations that may be grouped into pathways around which educational programs of study can be built.

- Agriculture, Food, and Natural Resources
- Hospitality and Tourism
- Architecture and Construction
- Human Services
- Information Technology
- Business, Management, and Administration
- Law, Public Safety, Corrections, and Security
- Government and Public Administration
- Science, Technology, Engineering, and Mathematics
- Arts, Audio/Video Technology and Communications
- Transportation, Distribution, Logistics
- Education and Training
- Manufacturing
- Finance
- Marketing
- Health Science

HIGH-DEMAND INDUSTRIES

High – Demand Industries listed under each career pathway heading, represent occupations that are in high demand and are projected to have positive future growth. Several of these occupations support Oklahoma's Industries, showing the broader impact each job had on the demand for the Oklahoma economy.



OKLAHOMA CAREER PATHWAYS



OKLAHOMA
Education



OKLAHOMA CAREER PATHWAYS

INTRODUCTION

The purpose of the Oklahoma Career Pathways Guide is to provide counselors with guidance to integrate ICAP requirements and the academic advising process. Career Pathways provides a framework for schools to showcase course offerings that align with students' desired career fields. By integrating ICAP into the academic advising process counselors will be able to efficiently and purposefully build a sequence of courses to guide students through their high school career and to post-secondary success. This guide should serve as a tool to support ICAP and academic advising systems currently in place.

HOW TO USE THIS DOCUMENT

Career Pathways highlight the courses a district offers that align with a student's chosen career. These Pathways should be customized to integrate state and local graduation requirements as well as locally offered courses through the high school, the local Tech Center, and Concurrent Enrollment. To help schools build out these resources, the Oklahoma State Department of Education has developed example Career Pathways, and a Course Matrix to help stakeholders better understand how the courses available to them align with each of the National Career Pathways.

Section Title	Description
Oklahoma Career Pathways	A template to help schools build career pathways that they are able to offer their students. The provided career pathway examples are intended to be revised by schools to reflect their course offerings.
Course Matrix	A high school course correlation table. The purpose of the table is to support the identification of courses for specific career pathways.





AGRICULTURE, FOOD, AND NATURAL RESOURCES PATHWAY

Career Field: Environmental and Agricultural Systems

Courses	Freshman	Sophomore	Junior	Senior
English & Language Arts	English I	English II	English III	English IV
Mathematics Courses	Algebra I	Geometry	Algebra II	Additional Advanced Math or Elective
Science Courses	Biology I	Physical Science, Chemistry, or Physics	Lab Science	Additional Lab Science or Elective
Social Studies Courses	OK History	World History	US History	US Government
Additional Required Courses And Elective Options	World Language or Computer	World Language or Computer	Fine Art	AP Environ. Science
	Intro to Agriscience	Intro to Horticulture	Greenhouse Production & Floral Design	Agriculture Communications
	Intro to Animal Science	Intro to Ag Power	Ag Power & Technology	Ag Structures

Personal Financial Literacy (PFL) and CPR Training must be completed prior to graduation. Honors, AP, and Concurrent Courses are available in many instances in place of on-level core courses.

Career-Related Work-Based Learning Activities

- Project-based Learning through Technology Center Program
- Job Shadow, Internship, or Apprenticeship within a Related Career Field Related

Careers and College Majors

- Landscape Architect
- Welder
- Floral Designer
- Ag Business
- Veterinarian





HEALTH SCIENCE PATHWAY

Career Field: Health Science

Courses	Freshman	Sophomore	Junior	Senior
English & Language Arts	English I	English II	English III	English IV
Mathematics Courses	Algebra I	Geometry	Algebra II	Additional Advanced Math or Elective
Science Courses	Biology I	Physical Science, Chemistry, or Physics	Lab Science	Additional Lab Science or Elective
Social Studies Courses	OK History	World History	US History	US Government
Additional Required Courses And Elective Options	World Language or Computer	World Language or Computer	Technology Center Program such as Nursing, Biotechnology, Radiology, or Physical Therapy Assistant	
	Fine Art	Athletic Training		
	Health			

Personal Financial Literacy (PFL) and CPR Training must be completed prior to graduation. Honors, AP, and Concurrent Courses are available in many instances in place of on-level core courses.

Career-Related Work-Based Learning Activities

- Project-based Learning through Technology Center Program
- Job Shadow, Internship, or Apprenticeship within a Related Career Field Related

Careers and College Majors

- Nursing
- Ultrasound Technician
- Physician (general, surgeon, etc.)
- Laboratory Technician
- Phlebotomists
- Pharmacists





ARTS, A/V TECHNOLOGY, AND COMMUNICATIONS

Career Field: Communication and Information Systems

Courses	Freshman	Sophomore	Junior	Senior
English & Language Arts	English I	English II	English III	English IV
Mathematics Courses	Algebra I	Geometry	Algebra II	Additional Advanced Math or Elective
Science Courses	Biology I	Physical Science, Chemistry, or Physics	Lab Science	Additional Lab Science or Elective
Social Studies Courses	OK History	World History	US History	US Government
Additional Required Courses And Elective Options	World Language or Computer	World Language or Computer	Creative Writing	Photography
	Journalism, Yearbook	Multimedia & Video Design		
	Drama, Actin	Yearbook	2d Art, 3D Art	

Personal Financial Literacy (PFL) and CPR Training must be completed prior to graduation. Honors, AP, and Concurrent Courses are available in many instances in place of on-level core courses.

Career-Related Work-Based Learning Activities

- Project-based Learning through Technology Center Program
- Job Shadow, Internship, or Apprenticeship within a Related Career Field Related

Careers and College Majors

- Videographer
- Writer
- Producer, Director
- Journalism
- Set Designer
- Sound Engineer





INFORMATION TECHNOLOGY PATHWAY

Career Field: Communication and Information Systems

Courses	Freshman	Sophomore	Junior	Senior
English & Language Arts	English I	English II	English III	English IV
Mathematics Courses	Algebra I	Geometry	Algebra II	Additional Advanced Math or Elective
Science Courses	Biology I	Physical Science, Chemistry, or Physics	Lab Science	Additional Lab Science or Elective
Social Studies Courses	OK History	World History	US History	US Government
Additional Required Courses And Elective Options	World Language or Computer	World Language or Computer	Technology Center Program such as Computer Repair, Cybersecurity, Multimedia Design	
	Fine Art	Computer Science		

Personal Financial Literacy (PFL) and CPR Training must be completed prior to graduation. Honors, AP, and Concurrent Courses are available in many instances in place of on-level core courses.

Career-Related Work-Based Learning Activities

- Project-based Learning through Technology Center Program
- Job Shadow, Internship, or Apprenticeship within a Related Career Field Related

Careers and College Majors

- Computer Engineer
- Game Developer
- Network Security Analyst
- Programmer





MANUFACTURING PATHWAY

Career Field: Industrial, Manufacturing, and Engineering Systems

Courses	Freshman	Sophomore	Junior	Senior
English & Language Arts	English I	English II	English III	English IV
Mathematics Courses	Algebra I	Geometry	Algebra II	Additional Advanced Math or Elective
Science Courses	Biology I	Physical Science, Chemistry, or Physics	Lab Science	Additional Lab Science or Elective
Social Studies Courses	OK History	World History	US History	US Government
Additional Required Courses And Elective Options	World Language or Computer	World Language or Computer	Technology Center Program such as Machine Operator, Drafting, or Welding	
	Intro to Agriscience	Ag Power		
	Fine Art			

Personal Financial Literacy (PFL) and CPR Training must be completed prior to graduation. Honors, AP, and Concurrent Courses are available in many instances in place of on-level core courses.

Career-Related Work-Based Learning Activities

- Project-based Learning through Technology Center Program
- Job Shadow, Internship, or Apprenticeship within a Related Career Field Related

Careers and College Majors

- Chemical Equipment Operator
- Wind Turbine Service Technician
- Machinist
- Installation, Maintenance, and Repair Worker





TRANSPORTATION, DISTRIBUTION, AND LOGISTICS PATHWAY

Career Field: Industrial, Manufacturing, and Engineering Systems

Courses	Freshman	Sophomore	Junior	Senior
English & Language Arts	English I	English II	English III	English IV
Mathematics Courses	Algebra I	Geometry	Algebra II	Additional Advanced Math or Elective
Science Courses	Biology I	Physical Science, Chemistry, or Physics	Lab Science	Additional Lab Science or Elective
Social Studies Courses	OK History	World History	US History	US Government
Additional Required Courses And Elective Options	World Language or Computer	World Language or Computer	Technology Center Program such as Automotive Service Tech, Light Diesel Service Tech or Medium/Heavy Diesel Service Tech, or Aviation	
	Fine Art			

Personal Financial Literacy (PFL) and CPR Training must be completed prior to graduation. Honors, AP, and Concurrent Courses are available in many instances in place of on-level core courses.

Career-Related Work-Based Learning Activities

- Project-based Learning through Technology Center Program
- Job Shadow, Internship, or Apprenticeship within a Related Career Field Related

Careers and College Majors

- Aircraft Engine Specialist
- Industrial Equipment Mechanics
- Facility Maintenance Manager
- Automotive Technician





SCIENCE, TECHNOLOGY, ENGINEERING & MATHEMATICS PATHWAY

Career Field: Industrial, Manufacturing, and Engineering Systems

Courses	Freshman	Sophomore	Junior	Senior
English & Language Arts	English I	English II	English III	English IV
Mathematics Courses	Algebra I	Geometry	Algebra II	Additional Advanced Math or Elective
Science Courses	Biology I	Physical Science, Chemistry, or Physics	Lab Science	Additional Lab Science or Elective
Social Studies Courses	OK History	World History	US History	US Government
Additional Required Courses And Elective Options	World Language or Computer	World Language or Computer	Fine Art	
	Pre-Engineering	Advanced Mathematics Courses	Advanced Science Courses	

Personal Financial Literacy (PFL) and CPR Training must be completed prior to graduation. Honors, AP, and Concurrent Courses are available in many instances in place of on-level core courses.

Career-Related Work-Based Learning Activities

- Project-based Learning through Technology Center Program
- Job Shadow, Internship, or Apprenticeship within a Related Career Field Related

Careers and College Majors

- Aerospace Engineer
- Biomedical Engineer
- Civil Engineer
- Mechanical Engineer
- Agricultural Engineer
- Chemical Engineer
- Microbiologist
- Geoscientist
- Archaeologist
- Mathematician
- Statistician





ARCHITECTURE AND CONSTRUCTION PATHWAY

Career Field: Industrial, Manufacturing, and Engineering Systems

Courses	Freshman	Sophomore	Junior	Senior
English & Language Arts	English I	English II	English III	English IV
Mathematics Courses	Algebra I	Geometry	Algebra II	Additional Advanced Math or Elective
Science Courses	Biology I	Physical Science, Chemistry, or Physics	Lab Science	Additional Lab Science or Elective
Social Studies Courses	OK History	World History	US History	US Government
Additional Required Courses And Elective Options	World Language or Computer	World Language or Computer	Technology Center Program such as Carpentry, HVAC, Pre-Engineering, or Computer Aided Drafting and Design	
	Intro to Engineering Design	Principles of Engineering		
	Fine Art			

Personal Financial Literacy (PFL) and CPR Training must be completed prior to graduation. Honors, AP, and Concurrent Courses are available in many instances in place of on-level core courses.

Career-Related Work-Based Learning Activities

- Project-based Learning through Technology Center Program
- Job Shadow, Internship, or Apprenticeship within a Related Career Field Related

Careers and College Majors

- Architect
- Construction Engineer
- Contractor
- Forklift Operator
- Safety Director
- HVAC





MARKETING PATHWAY

Career Field: Business, Marketing, and Management

Courses	Freshman	Sophomore	Junior	Senior
English & Language Arts	English I	English II	English III	English IV
Mathematics Courses	Algebra I	Geometry	Algebra II	Additional Advanced Math or Elective
Science Courses	Biology I	Physical Science, Chemistry, or Physics	Lab Science	Additional Lab Science or Elective
Social Studies Courses	OK History	World History	US History	US Government
Additional Required Courses And Elective Options	World Language or Computer	World Language or Computer	Fine Art	Digital Media Production
	Marketing Fundamentals	Accounting	Journalism	Yearbook
	Psychology	Sociology		

Personal Financial Literacy (PFL) and CPR Training must be completed prior to graduation. Honors, AP, and Concurrent Courses are available in many instances in place of on-level core courses.

Career-Related Work-Based Learning Activities

- Project-based Learning through Technology Center Program
- Job Shadow, Internship, or Apprenticeship within a Related Career Field Related

Careers and College Majors

- Public Relations
- Advertising and Promotions Manager
- Real Estate Broker
- Social Media Marketing





FINANCE PATHWAY

Career Field: Business, Marketing, and Management

Courses	Freshman	Sophomore	Junior	Senior
English & Language Arts	English I	English II	English III	English IV
Mathematics Courses	Algebra I	Geometry	Algebra II	Additional Advanced Math or Elective
Science Courses	Biology I	Physical Science, Chemistry, or Physics	Lab Science	Additional Lab Science or Elective
Social Studies Courses	OK History	World History	US History	US Government
Additional Required Courses And Elective Options	World Language or Computer	World Language or Computer	Fine Art	Statistics
	Business Law	Marketing Fundamentals	Accounting	Economics
	Math of Finance	Psychology		

Personal Financial Literacy (PFL) and CPR Training must be completed prior to graduation. Honors, AP, and Concurrent Courses are available in many instances in place of on-level core courses.

Career-Related Work-Based Learning Activities

- Project-based Learning through Technology Center Program
- Job Shadow, Internship, or Apprenticeship within a Related Career Field Related

Careers and College Majors

- Banking Services
- Loan Officer
- Insurance
- Accounting
- Payroll Clerk





BUSINESS MANAGEMENT AND ADMINISTRATION PATHWAY

Career Field: Business, Marketing, and Management

Courses	Freshman	Sophomore	Junior	Senior
English & Language Arts	English I	English II	English III	English IV
Mathematics Courses	Algebra I	Geometry	Algebra II	Additional Advanced Math or Elective
Science Courses	Biology I	Physical Science, Chemistry, or Physics	Lab Science	Additional Lab Science or Elective
Social Studies Courses	OK History	World History	US History	US Government
Additional Required Courses And Elective Options	World Language or Computer	World Language or Computer	Fine Art	
	Business Law	Marketing Fundamentals	Accounting	Speech & Debate

Personal Financial Literacy (PFL) and CPR Training must be completed prior to graduation. Honors, AP, and Concurrent Courses are available in many instances in place of on-level core courses.

Career-Related Work-Based Learning Activities

- Project-based Learning through Technology Center Program
- Job Shadow, Internship, or Apprenticeship within a Related Career Field Related

Careers and College Majors

- Administrative Assistant
- Human Resources
- Office Manager
- Sales Representative





HOSPITALITY AND TOURISM PATHWAY

Career Field: Business, Marketing, and Management

Courses	Freshman	Sophomore	Junior	Senior
English & Language Arts	English I	English II	English III	English IV
Mathematics Courses	Algebra I	Geometry	Algebra II	Additional Advanced Math or Elective
Science Courses	Biology I	Physical Science, Chemistry, or Physics	Lab Science	Additional Lab Science or Elective
Social Studies Courses	OK History	World History	US History	US Government
Additional Required Courses And Elective Options	World Language or Computer	World Language or Computer	Technology Center Program such as Culinary Arts, Event Planning, or Restaurant and Lodging Management	
	Intro to FACS	Food & Nutrition		
	Fine Art			

Personal Financial Literacy (PFL) and CPR Training must be completed prior to graduation. Honors, AP, and Concurrent Courses are available in many instances in place of on-level core courses.

Career-Related Work-Based Learning Activities

- Project-based Learning through Technology Center Program
- Job Shadow, Internship, or Apprenticeship within a Related Career Field Related

Careers and College Majors

- Chef, Baker, Caterer
- Restaurant Owner, Manager
- Hote/Resort Manager
- Event Planner





HUMAN SERVICES PATHWAY

Career Field: Human Services and Resources

Courses	Freshman	Sophomore	Junior	Senior
English & Language Arts	English I	English II	English III	English IV
Mathematics Courses	Algebra I	Geometry	Algebra II	Additional Advanced Math or Elective
Science Courses	Biology I	Physical Science, Chemistry, or Physics	Lab Science	Additional Lab Science or Elective
Social Studies Courses	OK History	World History	US History	US Government
Additional Required Courses And Elective Options	World Language or Computer	World Language or Computer	Technology Center Program such as Cosmetology, Personal Training	
	Intro to FACS	Marriage and Family Life		
	Psychology	Fine Art		

Personal Financial Literacy (PFL) and CPR Training must be completed prior to graduation. Honors, AP, and Concurrent Courses are available in many instances in place of on-level core courses.

Career-Related Work-Based Learning Activities

- Project-based Learning through Technology Center Program
- Job Shadow, Internship, or Apprenticeship within a Related Career Field Related

Careers and College Majors

- Social Worker
- Counselor, Therapist
- Esthetician
- Hair Stylist
- Personal Trainer





LAW, PUBLIC SAFETY, CORRECTIONS, AND SECURITY PATHWAY

Career Field: Human Services and Resources

Courses	Freshman	Sophomore	Junior	Senior
English & Language Arts	English I	English II	English III	English IV
Mathematics Courses	Algebra I	Geometry	Algebra II	Additional Advanced Math or Elective
Science Courses	Biology I	Physical Science, Chemistry, or Physics	Lab Science	Additional Lab Science or Elective
Social Studies Courses	OK History	World History	US History	US Government
Additional Required Courses And Elective Options	World Language or Computer	World Language or Computer	Fine Art	
	Business Law	Sociology	Criminology	Forensic Science

Personal Financial Literacy (PFL) and CPR Training must be completed prior to graduation. Honors, AP, and Concurrent Courses are available in many instances in place of on-level core courses.

Career-Related Work-Based Learning Activities

- Project-based Learning through Technology Center Program
- Job Shadow, Internship, or Apprenticeship within a Related Career Field Related

Careers and College Majors

- Court Reporter
- Sheriff
- Security Guard
- Correctional Officer
- Police Officer
- Firefighter
- Paramedic





GOVERNMENT AND PUBLIC ADMINISTRATION PATHWAY

Career Field: Human Services and Resources

Courses	Freshman	Sophomore	Junior	Senior
English & Language Arts	English I	English II	English III	English IV
Mathematics Courses	Algebra I	Geometry	Algebra II	Additional Advanced Math or Elective
Science Courses	Biology I	Physical Science, Chemistry, or Physics	Lab Science	Additional Lab Science or Elective
Social Studies Courses	OK History	World History	US History	US Government
Additional Required Courses And Elective Options	World Language or Computer	World Language or Computer	Fine Art	Speech & Debate
	Business Law	AP Human Geogaphy	AP European History	Sociology
	Psychology			

Personal Financial Literacy (PFL) and CPR Training must be completed prior to graduation. Honors, AP, and Concurrent Courses are available in many instances in place of on-level core courses.

Career-Related Work-Based Learning Activities

- Project-based Learning through Technology Center Program
- Job Shadow, Internship, or Apprenticeship within a Related Career Field Related

Careers and College Majors

- Legislator
- Political Scientist
- Reporter and Correspondent
- Emergency Management Director





EDUCATION AND TRAINING PATHWAY

Career Field: Human Services and Resources

Courses	Freshman	Sophomore	Junior	Senior
English & Language Arts	English I	English II	English III	English IV
Mathematics Courses	Algebra I	Geometry	Algebra II	Additional Advanced Math or Elective
Science Courses	Biology I	Physical Science, Chemistry, or Physics	Lab Science	Additional Lab Science or Elective
Social Studies Courses	OK History	World History	US History	US Government
Additional Required Courses And Elective Options	World Language or Computer	World Language or Computer	Fine Art	
	FACS Basics	Parenting and Child Development	Surviving and Thriving	
	Psychology	Sociology		

Personal Financial Literacy (PFL) and CPR Training must be completed prior to graduation. Honors, AP, and Concurrent Courses are available in many instances in place of on-level core courses.

Career-Related Work-Based Learning Activities

- Project-based Learning through Technology Center Program
- Job Shadow, Internship, or Apprenticeship within a Related Career Field Related

Careers and College Majors

- Child Care Director, Nanny
- Early Education Teacher
- High School Teacher
- College Faculty, Professor
- School Counselor





ENERGY PATHWAY

Career Field: Energy

Courses	Freshman	Sophomore	Junior	Senior
English & Language Arts	English I	English II	English III	English IV
Mathematics Courses	Algebra I	Geometry	Algebra II	Additional Advanced Math or Elective
Science Courses	Biology I	Physical Science, Chemistry, or Physics	Lab Science	Additional Lab Science or Elective
Social Studies Courses	OK History	World History	US History	US Government
Additional Required Courses And Elective Options	World Language or Computer	World Language or Computer	Technology Center Program such as Lineman Training	
	Pre-Engineering			
	Fine Art			

Personal Financial Literacy (PFL) and CPR Training must be completed prior to graduation. Honors, AP, and Concurrent Courses are available in many instances in place of on-level core courses.

Career-Related Work-Based Learning Activities

- Project-based Learning through Technology Center Program
- Job Shadow, Internship, or Apprenticeship within a Related Career Field Related

Careers and College Majors

- Industrial Production
- Biofuels Production
- Engineering
- Technicians
- Geothermal Production
- Electrical Power-Line Installers and Repairers
- Power Plant Operator



Business Education Eligible for Elective Credit Only	Agriculture, Food, Natural Resources	Health Science	Arts, AV Tech Communications	Information Technology	Architecture & Construction	Manufacturing	STEM	Transportation, Distribution, Logistics	Business Management & Administration	Finance	Hospitality & Tourism	Marketing	Education & Training	Government & Public Administration	Human Services	Law, Public Safety, Corrections, Security
	Accounting I & II															
Business Communications	◆	◆														
Business English	◆	◆														
Business Law / Education		◆														
Business Machines																
Business Mathematics																
Business Organization and Management																
Careers/Exploration																
Consumer Economics / Education	◆															
Consumer Law	◆															
Economics																
Finance (not for PFL)	◆	◆														
General Business	◆	◆														
IB Business Education																
Information Processing																
Introduction to Business Technology I & II																
Marketing																
Office/Secretarial Procedures		◆														
Recordkeeping		◆														

Computer Science and Technology Education 2 years of same World Language or 2 Computer Technology courses required for graduation	Agriculture, Food, Natural Resources	Health Science	Arts, AV Tech Communications	Information Technology	Architecture & Construction	Manufacturing	STEM	Transportation, Distribution, Logistics	Business Management & Administration	Finance	Hospitality & Tourism	Marketing	Education & Training	Government & Public Administration	Human Services	Law, Public Safety, Corrections, Security
	Computer Science															
Advanced Programming																
AP Computer Science A																
AP Computer Science Principles																
Computer Science I & II	◆	◆														
Cybersecurity																
IB Computer Education																
Web Design																
Technology Education																
Computer Applications I & II																
Desktop Publishing																
E-Sports (elective)																
Keyboarding (elective)	◆	◆														

Course alignment with Career Pathways is a local decision. This tool is intended to be used as a resource by school districts and customized as needed to reflect course offerings and available Pathways.

English Language Arts 4 are required in grades 9 - 12		Agriculture, Food, Natural Resources	Health Science	Arts, AV Tech Communications	Information Technology	Architecture & Construction	Manufacturing	STEM	Transportation, Distribution, Logistics	Business Management & Administration	Finance	Hospitality & Tourism	Marketing	Education & Training	Government & Public Administration	Human Services	Law, Public Safety, Corrections, Security
English I		◆	◆	◆	◆	◆	◆	◆	◆	◆	◆	◆	◆	◆	◆	◆	◆
English II		◆	◆	◆	◆	◆	◆	◆	◆	◆	◆	◆	◆	◆	◆	◆	◆
English III		◆	◆	◆	◆	◆	◆	◆	◆	◆	◆	◆	◆	◆	◆	◆	◆
English IV		◆	◆	◆	◆	◆	◆	◆	◆	◆	◆	◆	◆	◆	◆	◆	◆
AP English Language & Composition		◆	◆	◆	◆	◆	◆	◆	◆	◆	◆	◆	◆	◆	◆	◆	◆
AP English Literature & Composition		◆	◆	◆	◆	◆	◆	◆	◆	◆	◆	◆	◆	◆	◆	◆	◆
IB Language Arts		◆	◆	◆	◆	◆	◆	◆	◆	◆	◆	◆	◆	◆	◆	◆	◆
Eligible for Elective Credit Only																	
Advanced Writing				◆	◆					◆	◆						
Applied Communications		◆	◆	◆	◆	◆	◆	◆	◆	◆	◆	◆	◆	◆	◆	◆	◆
Creative Writing			◆	◆	◆	◆	◆	◆	◆	◆	◆	◆	◆	◆	◆	◆	◆
English Language Arts Remediation				◆	◆							◆	◆				
English Language Learners				◆									◆				
Journalism				◆													
Library Science														◆	◆		
Mythology				◆										◆	◆		
Newspaper				◆										◆	◆		
Reading										◆						◆	◆
Reading Remediation																	◆
World Literature				◆													
Yearbook				◆													
Family and Consumer Sciences Eligible for Elective Credit Only		Agriculture, Food, Natural Resources	Health Science	Arts, AV Tech Communications	Information Technology	Architecture & Construction	Manufacturing	STEM	Transportation, Distribution, Logistics	Business Management & Administration	Finance	Hospitality & Tourism	Marketing	Education & Training	Government & Public Administration	Human Services	Law, Public Safety, Corrections, Security
										◆	◆	◆	◆	◆	◆	◆	◆
Family and Consumer Sciences																	
Family Relations / Marriage and Family																	

Course alignment with Career Pathways is a local decision. This tool is intended to be used as a resource by school districts and customized as needed to reflect course offerings and available Pathways.

Fine Arts: Dance		Agriculture, Food, Natural Resources	Health Science	Arts, AV Tech Communications	Information Technology	Architecture & Construction	Manufacturing	STEM	Transportation, Distribution, Logistics	Business Management & Administration	Finance	Hospitality & Tourism	Marketing	Education & Training	Government & Public Administration	Human Services	Law, Public Safety, Corrections, Security
Ballet				◆													
Color Guard				◆													
Dance Appreciation				◆													
Dance for Musical Theatre				◆								◆					
Dance				◆													
Dance Improvisation and Composition				◆													
Dance Performance and Production				◆													
Hip Hop				◆													
Jazz				◆													
Modern Dance				◆													
Tap				◆													
World/Cultural Dance				◆													
Flag Corps / Drill Team (elective)				◆													

Fine Arts: Drama/Theatre		Agriculture, Food, Natural Resources	Health Science	Arts, AV Tech Communications	Information Technology	Architecture & Construction	Manufacturing	STEM	Transportation, Distribution, Logistics	Business Management & Administration	Finance	Hospitality & Tourism	Marketing	Education & Training	Government & Public Administration	Human Services	Law, Public Safety, Corrections, Security
Acting				◆													
Drama			◆	◆					◆				◆				
Speech and Competitive Acting			◆	◆					◆				◆				
Technical Theatre				◆													
Vocal Production/Theater				◆													

Fine Arts: Media Arts		Agriculture, Food, Natural Resources	Health Science	Arts, AV Tech Communications	Information Technology	Architecture & Construction	Manufacturing	STEM	Transportation, Distribution, Logistics	Business Management & Administration	Finance	Hospitality & Tourism	Marketing	Education & Training	Government & Public Administration	Human Services	Law, Public Safety, Corrections, Security
Animation I & II				◆					◆				◆				
Film I & II				◆					◆			◆	◆				
Graphic Design				◆	◆				◆				◆				
Media Arts				◆		◆			◆				◆				
Photography				◆					◆				◆				
Video & Audio Production				◆					◆				◆				

Course alignment with Career Pathways is a local decision. This tool is intended to be used as a resource by school districts and customized as needed to reflect course offerings and available Pathways.

Fine Arts: Music		Agriculture, Food, Natural Resources	Health Science	Arts, AV Tech Communications	Information Technology	Architecture & Construction	Manufacturing	STEM	Transportation, Distribution, Logistics	Business Management & Administration	Finance	Hospitality & Tourism	Marketing	Education & Training	Government & Public Administration	Human Services	Law, Public Safety, Corrections, Security
AP Music Theory				◆													
Applied Music				◆													
Band				◆													
Culturally Influenced Ensemble				◆													
General Music				◆													
Guitar				◆													
IB Music				◆													
Jazz Band				◆													
Music Appreciation				◆													
Music History				◆								◆	◆				
Music Immersive Experience				◆													
Music Theory				◆													
Orchestra				◆													
Piano				◆													
Show Choir				◆													
Vocal Music				◆													
Vocal Productions / Theater				◆													

Fine Arts: Visual Arts		Agriculture, Food, Natural Resources	Health Science	Arts, AV Tech Communications	Information Technology	Architecture & Construction	Manufacturing	STEM	Transportation, Distribution, Logistics	Business Management & Administration	Finance	Hospitality & Tourism	Marketing	Education & Training	Government & Public Administration	Human Services	Law, Public Safety, Corrections, Security
AP 2-D Art and Design				◆													
AP 3-D Art and Design				◆		◆							◆				
AP Art History				◆													
AP Drawing				◆													
Art				◆													
Art Appreciation				◆		◆											
Art History				◆								◆	◆				
Ceramics / Pottery				◆													
Drawing				◆													
Folk Art				◆													
IB Arts				◆													
Jewelry and Metals				◆													
Painting				◆								◆					
Photography				◆									◆				
Sculpture				◆													
Studio Art 3-D				◆													
Studio Art 3-D Design				◆													

Course alignment with Career Pathways is a local decision. This tool is intended to be used as a resource by school districts and customized as needed to reflect course offerings and available Pathways.

Mathematics 3 are required in grades 9 - 12		Agriculture, Food, Natural Resources	Health Science	Arts, AV Tech Communications	Information Technology	Architecture & Construction	Manufacturing	STEM	Transportation, Distribution, Logistics	Business Management & Administration	Finance	Hospitality & Tourism	Marketing	Education & Training	Government & Public Administration	Human Services	Law, Public Safety, Corrections, Security
Advanced Studies in Math I & II																	
Algebra I	◆	◆	◆	◆	◆	◆	◆	◆	◆	◆	◆	◆	◆	◆	◆	◆	◆
Geometry	◆	◆	◆	◆	◆	◆	◆	◆	◆	◆	◆	◆	◆	◆	◆	◆	◆
Algebra II	◆	◆	◆	◆	◆	◆	◆	◆	◆	◆	◆	◆	◆	◆	◆	◆	◆
Algebra III																	
AP Calculus AB	◆																
AP Calculus BC	◆																
AP Precalculus			◆														
AP Statistics		◆		◆													
Calculus	◆				◆												
IB Further Mathematics																	
IB Mathematical Studies																	
IB Mathematics																	
Pre-Calculus																	
Statistics and Probability	◆																
Trigonometry	◆		◆	◆	◆	◆	◆	◆	◆	◆	◆	◆	◆	◆	◆	◆	◆
For Core Diploma Pathway Only, if taught by Certified Math Teacher																	
Advanced Programming																	
Computer Science I & II					◆	◆	◆	◆									
Intermediate Algebra		◆															
Mathematics of Finance (not for PFL)																	
For Elective Credit Only																	
Applied Mathematics I & II																	
College Career Math Ready																	
Consumer Mathematics																	
General Mathematics																	
High School Arithmetic																	
Math Remediation																	
Pre-Algebra																	

Personal Financial Literacy		Agriculture, Food, Natural Resources	Health Science	Arts, AV Tech Communications	Information Technology	Architecture & Construction	Manufacturing	STEM	Transportation, Distribution, Logistics	Business Management & Administration	Finance	Hospitality & Tourism	Marketing	Education & Training	Government & Public Administration	Human Services	Law, Public Safety, Corrections, Security
Personal Financial Literacy	◆		◆	◆	◆	◆	◆	◆	◆	◆	◆	◆	◆	◆	◆	◆	◆

Course alignment with Career Pathways is a local decision. This tool is intended to be used as a resource by school districts and customized as needed to reflect course offerings and available Pathways.

Science 3 are required in grades 9 – 12: Biology I, a physical science, and a 3 rd science at or above the rigor of the Biology 1 or physical science competencies		Agriculture, Food, Natural Resources	Health Science	Arts, AV Tech Communications	Information Technology	Architecture & Construction	Manufacturing	STEM	Transportation, Distribution, Logistics	Business Management & Administration	Finance	Hospitality & Tourism	Marketing	Education & Training	Government & Public Administration	Human Services	Law, Public Safety, Corrections, Security
Earth and Space Sciences																	
AP Environmental Science		◆				◆	◆	◆	◆	◆	◆						
Astronomy																	
Earth and Space Science																	
Environmental Science		◆				◆	◆	◆	◆	◆		◆					
Geology																	
Meteorology																	
Life Sciences																	
Anatomy		◆						◆	◆	◆							
AP Biology		◆						◆	◆	◆						◆	◆
Biology I		◆			◆			◆	◆	◆	◆						◆
Biology II		◆						◆	◆	◆	◆						◆
Biotechnology		◆						◆	◆	◆	◆						◆
Botany		◆						◆	◆	◆	◆						◆
Ecology		◆						◆	◆	◆	◆						◆
Forensic Science								◆	◆	◆	◆						◆
IB Biology		◆						◆	◆	◆	◆						◆
Life Science								◆	◆	◆	◆						◆
Microbiology								◆	◆	◆	◆						◆
Physiology								◆	◆	◆	◆						◆
Zoology		◆						◆	◆	◆	◆						◆
Physical Sciences																	
Aeronautics																	
AP Chemistry								◆	◆	◆	◆						
AP Physics B		◆						◆	◆	◆	◆						
AP Physics C – Electricity and Magnetism		◆						◆	◆	◆	◆						
AP Physics C – Mechanics		◆						◆	◆	◆	◆						
AP Physics I & II		◆						◆	◆	◆	◆						
Chemistry I & II		◆						◆	◆	◆	◆						
IB Chemistry		◆						◆	◆	◆	◆						
IB Physics		◆						◆	◆	◆	◆						
Physical Science		◆						◆	◆	◆	◆						
Physics I & II		◆						◆	◆	◆	◆						
Science Electives																	
Electronics																	
General Science						◆		◆	◆	◆	◆						
Pre-Biology								◆	◆	◆	◆						
Principles of Technology					◆			◆	◆	◆	◆						

Course alignment with Career Pathways is a local decision. This tool is intended to be used as a resource by school districts and customized as needed to reflect course offerings and available Pathways.

Social Studies
 3 are required in grades 9 – 12
 OK History (½ unit), US History, and US
 Government (½ unit);

	Agriculture, Food, Natural Resources	Health Science	Arts, AV Tech Communications	Information Technology	Architecture & Construction	Manufacturing	STEM	Transportation, Distribution, Logistics	Business Management & Administration	Finance	Hospitality & Tourism	Marketing	Education & Training	Government & Public Administration	Human Services	Law, Public Safety, Corrections, Security
American Indian Studies																
Ancient and Medieval History																
Anthropology	◆				◆											
AP African American Studies																
AP Comparative Government and Politics	◆	◆	◆		◆				◆		◆	◆	◆	◆	◆	◆
AP European History																
AP Human Geography	◆															
AP Macroeconomics	◆	◆														
AP Microeconomics	◆	◆														
AP Psychology																
AP United States Government and Politics	◆	◆	◆	◆	◆	◆	◆	◆	◆	◆	◆	◆	◆	◆	◆	◆
AP United States History	◆	◆	◆	◆	◆	◆	◆	◆	◆	◆	◆	◆	◆	◆	◆	◆
AP World History	◆	◆	◆	◆	◆	◆	◆	◆	◆	◆	◆	◆	◆	◆	◆	◆
Asian History																
Black History																
Civics																
Economics	◆	◆							◆	◆	◆	◆	◆	◆	◆	◆
European History																
History of Religion																
Geography																
IB Social Studies																
IB World Religion																
Local History	◆	◆	◆	◆	◆	◆	◆	◆	◆	◆	◆	◆	◆	◆	◆	◆
Military History																
Modern History	◆	◆	◆	◆	◆	◆	◆	◆	◆	◆	◆	◆	◆	◆	◆	◆
Oklahoma History	◆	◆	◆	◆	◆	◆	◆	◆	◆	◆	◆	◆	◆	◆	◆	◆
Political Science																
Problems of Democracy																
US Government	◆	◆	◆	◆	◆	◆	◆	◆	◆	◆	◆	◆	◆	◆	◆	◆
US History	◆	◆	◆	◆	◆	◆	◆	◆	◆	◆	◆	◆	◆	◆	◆	◆
World Cultures																
World History	◆	◆	◆	◆	◆	◆	◆	◆	◆	◆	◆	◆	◆	◆	◆	◆
Eligible for Additional Unit																
Consumer Law																
Criminology																
International Problems																
Philosophy																
Psychology		◆	◆	◆												
Psychology of Learning				◆												
Sociology																
Street Law																
Eligible for Elective Credit Only																
Current Issues & Events	◆	◆	◆	◆	◆	◆	◆	◆	◆	◆	◆	◆	◆	◆	◆	◆

Course alignment with Career Pathways is a local decision. This tool is intended to be used as a resource by school districts and customized as needed to reflect course offerings and available Pathways.

Speech and Communications	Agriculture, Food, Natural Resources	Health Science	Arts, AV Tech Communications	Information Technology	Architecture & Construction	Manufacturing	STEM	Transportation, Distribution, Logistics	Business Management & Administration	Finance	Hospitality & Tourism	Marketing	Education & Training	Government & Public Administration	Human Services	Law, Public Safety, Corrections, Security
	◆	◆	◆	◆	◆	◆	◆	◆	◆	◆	◆	◆	◆	◆	◆	◆

Eligible for All Diploma Pathways	◆		◆													
Debate				◆												
Eligible for Speech or Fine Arts for College Prep Only	◆	◆	◆	◆	◆	◆	◆	◆	◆	◆	◆	◆	◆	◆	◆	◆
Public Speaking																

World / Non-English Languages 2 years of same World Language <u>or</u> 2 Computer Technology courses required for graduation	Agriculture, Food, Natural Resources	Health Science	Arts, AV Tech Communications	Information Technology	Architecture & Construction	Manufacturing	STEM	Transportation, Distribution, Logistics	Business Management & Administration	Finance	Hospitality & Tourism	Marketing	Education & Training	Government & Public Administration	Human Services	Law, Public Safety, Corrections, Security
	American Sign Language	◆	◆	◆	◆	◆	◆	◆	◆	◆	◆	◆	◆	◆	◆	◆
Chinese, AP Chinese, IB Chinese	◆	◆	◆	◆	◆	◆	◆	◆	◆	◆	◆	◆	◆	◆	◆	◆
French, AP French, IB French	◆	◆	◆	◆	◆	◆	◆	◆	◆	◆	◆	◆	◆	◆	◆	◆
German, AP German, IB German	◆	◆	◆	◆	◆	◆	◆	◆	◆	◆	◆	◆	◆	◆	◆	◆
Greek	◆	◆	◆	◆	◆	◆	◆	◆	◆	◆	◆	◆	◆	◆	◆	◆
Heritage Spanish	◆	◆	◆	◆	◆	◆	◆	◆	◆	◆	◆	◆	◆	◆	◆	◆
Italian & AP Italian	◆	◆	◆	◆	◆	◆	◆	◆	◆	◆	◆	◆	◆	◆	◆	◆
Japanese, AP Japanese, IB Japanese	◆	◆	◆	◆	◆	◆	◆	◆	◆	◆	◆	◆	◆	◆	◆	◆
Latin, AP Latin, IB Latin	◆	◆	◆	◆	◆	◆	◆	◆	◆	◆	◆	◆	◆	◆	◆	◆
Native American Languages	◆	◆	◆	◆	◆	◆	◆	◆	◆	◆	◆	◆	◆	◆	◆	◆
Russian	◆	◆	◆	◆	◆	◆	◆	◆	◆	◆	◆	◆	◆	◆	◆	◆
Spanish, AP Spanish, IB Spanish	◆	◆	◆	◆	◆	◆	◆	◆	◆	◆	◆	◆	◆	◆	◆	◆
Turkish	◆	◆	◆	◆	◆	◆	◆	◆	◆	◆	◆	◆	◆	◆	◆	◆

Course alignment with Career Pathways is a local decision. This tool is intended to be used as a resource by school districts and customized as needed to reflect course offerings and available Pathways.

Additional College Courses These courses should only be used when no corresponding HS code is available		Agriculture, Food, Natural Resources	Health Science	Arts, AV Tech Communications	Information Technology	Architecture & Construction	Manufacturing	STEM	Transportation, Distribution, Logistics	Business Management & Administration	Finance	Hospitality & Tourism	Marketing	Education & Training	Government & Public Administration	Human Services	Law, Public Safety, Corrections, Security
College Business Ed	◆	◆	◆	◆	◆	◆	◆	◆	◆	◆	◆	◆	◆	◆	◆	◆	◆
College Computer Science / Tech	◆	◆	◆	◆	◆	◆	◆	◆	◆	◆	◆	◆	◆	◆	◆	◆	◆
College English Lang. Arts	◆	◆	◆	◆	◆	◆	◆	◆	◆	◆	◆	◆	◆	◆	◆	◆	◆
College Family and Consumer Sciences	◆	◆	◆	◆	◆	◆	◆	◆	◆	◆	◆	◆	◆	◆	◆	◆	◆
College Humanities	◆	◆	◆	◆	◆	◆	◆	◆	◆	◆	◆	◆	◆	◆	◆	◆	◆
College Fine Arts	◆	◆	◆	◆	◆	◆	◆	◆	◆	◆	◆	◆	◆	◆	◆	◆	◆
College Industrial Arts / Technology Ed	◆	◆	◆	◆	◆	◆	◆	◆	◆	◆	◆	◆	◆	◆	◆	◆	◆
College Math	◆	◆	◆	◆	◆	◆	◆	◆	◆	◆	◆	◆	◆	◆	◆	◆	◆
College Physical Education	◆	◆	◆	◆	◆	◆	◆	◆	◆	◆	◆	◆	◆	◆	◆	◆	◆
College Science	◆	◆	◆	◆	◆	◆	◆	◆	◆	◆	◆	◆	◆	◆	◆	◆	◆
College Social Studies	◆	◆	◆	◆	◆	◆	◆	◆	◆	◆	◆	◆	◆	◆	◆	◆	◆
College Speech	◆	◆	◆	◆	◆	◆	◆	◆	◆	◆	◆	◆	◆	◆	◆	◆	◆
College World Language	◆	◆	◆	◆	◆	◆	◆	◆	◆	◆	◆	◆	◆	◆	◆	◆	◆

Additional Electives		Agriculture, Food, Natural Resources	Health Science	Arts, AV Tech Communications	Information Technology	Architecture & Construction	Manufacturing	STEM	Transportation, Distribution, Logistics	Business Management & Administration	Finance	Hospitality & Tourism	Marketing	Education & Training	Government & Public Administration	Human Services	Law, Public Safety, Corrections, Security
AP Seminar (elective)	◆	◆	◆	◆				◆		◆							
AP Research (elective)	◆	◆	◆	◆				◆		◆							
IB Theory of Knowledge																	
Academic Achievement	◆	◆	◆	◆				◆		◆							
Academic Commitment to Education	◆	◆	◆	◆				◆		◆							
Academic Team	◆	◆	◆	◆				◆		◆							
ACT, SAT, PSAT, or NIMOT Preparation	◆	◆	◆	◆				◆		◆							
Character Education	◆	◆	◆	◆				◆		◆							
Communication Skills	◆	◆	◆	◆				◆		◆							
Critical Thinking Skills	◆	◆	◆	◆				◆		◆							
Driver Education	◆	◆	◆	◆				◆		◆							
Internship I & II	◆	◆	◆	◆				◆		◆							
JROTC																	
Leadership	◆	◆	◆	◆				◆		◆							
Life Skills	◆	◆	◆	◆				◆		◆							
Resource Teacher			◆	◆				◆		◆							
Safety Education			◆	◆				◆		◆							
Service Learning	◆	◆	◆	◆				◆		◆							
General Religious Studies																	
Religion & Theology																	

Course alignment with Career Pathways is a local decision. This tool is intended to be used as a resource by school districts and customized as needed to reflect course offerings and available Pathways.



COLLEGE AND CAREER READY ASSESSMENT (CCRA) TRANSCRIPT GUIDANCE

Oklahoma state law requires that students meet certain assessment requirements in order to graduate from a public high school with a standard diploma (see [70 O.S. § 1210.508](#)). Under this statute, scores from tests included in the statewide student assessment system must be included on student transcripts. This includes English Language Arts (ELA), Mathematics, US History, and Science. A student transcript must also include any business- or industry-recognized endorsements the student attains

OKLAHOMA CCRA TRANSCRIPT REQUIREMENTS

ACT (TAKEN IN 11TH GRADE)

- Minimum Requirement: OSTP* scale score, known as the OPI** for:
 - English Language Arts (Reading/Writing) section
 - Mathematics section
- Districts may include the highest composite score achieved from the ACT or SAT as additional information (please see further notes below)

SCIENCE ASSESSMENT (TAKEN IN 11TH GRADE)

- Minimum Requirement: OSTP* scale score, known as the OPI**

U.S. HISTORY (LIKELY TAKEN IN 11TH GRADE)

- Minimum Requirement: OSTP* scale score, known as the OPI**

PASS U.S. NATURALIZATION TEST (TAKEN 8TH-12TH GRADE) (CLASS OF 2025)

- Transcript Statement: “The student has satisfactorily completed the U.S. Naturalization Test graduation requirement”

*Oklahoma School Testing Program (OSTP)

**Oklahoma Performance Index (OPI), this number is between 200-399

OPI scale scores can be found on the Accountability Reporting application in Single Sign-On and on the OSTP portal at: <https://ok-uat.cognia.org/>



COLLEGE AND CAREER READY ASSESSMENT (CCRA) TRANSCRIPT GUIDANCE CONT.

TRANSCRIPTING ACT COMPOSITE SCORE AND ADDITIONAL SUBSCORES:

Additional ACT scoring information may be included on the transcript at the school district's discretion. **If a composite score is included, the district must use the highest achieved composite score.**

Potential benefits for students of transcribing composite scores/additional sub-scores:

Many Oklahoma college admissions offices require the ACT scores. Score report data will be sent for free to up to four institutions when provided during test registration. If the score is included on their transcript, a student does not need to pay additional fees to MyACT for scoring reports. MyACT charges for each report sent to a higher education institution.

Potential drawbacks for students of transcribing sub-scores:

Some individuals may not want non-required assessment score information included on the student transcript for reasons ranging from privacy to equity concerns. Many colleges are also using a test-optional admissions model. Districts that choose to transcript composite scores/additional sub-scores may wish to give students the option to request that only the state-required assessment components be listed on their transcript.

OKLAHOMA'S 100 "CRITICAL OCCUPATIONS" (2021-2030)



SOC	DESCRIPTION	2021 JOBS	2030 JOBS	2021-2030 CHANGE	2021-2030 % CHANGE	MEDIAN HOURLY EARNINGS	MEDIAN ANNUAL EARNINGS	AVG. ANNUAL OPENINGS	TYPICAL ENTRY LEVEL	LEVEL	TYPICAL ON-THE-JOB TRAINING
29-1123	Physical Therapists	2,025	2,307	283	14%	\$38.09	\$79,227.20	146	Doctoral or professional degree	7	None
23-1011	Lawyers	6,959	7,034	75	1%	\$45.31	\$94,244.80	401	Doctoral or professional degree	7	None
29-1229	Physicians, All Other	2,117	2,156	39	2%	\$100.00	\$208,000.00	109	Doctoral or professional degree	7	Internship/residency
29-1171	Nurse Practitioners	2,548	3,384	837	33%	\$52.72	\$109,657.60	244	Master's degree	6	None
29-1127	Speech-Language Pathologists	1,771	2,114	343	19%	\$36.89	\$76,731.20	159	Master's degree	6	Internship/residency
11-9032	Education Administrators, Kindergarten through Secondary	3,144	3,296	152	5%	\$37.11	\$77,190.00	268	Master's degree	6	None
21-1022	Healthcare Social Workers	2,237	2,308	71	3%	\$23.12	\$48,089.60	238	Master's degree	6	Internship/residency
21-1012	Educational Guidance and Career Counselors and Advisors	3,624	3,691	67	2%	\$23.70	\$49,296.00	375	Master's degree	6	None
25-9031	Instructional Coordinators	2,567	2,594	26	1%	\$23.97	\$49,857.60	273	Master's degree	6	None
11-1021	General and Operations Managers	30,297	32,542	2,245	7%	\$37.57	\$78,145.60	2,865	Bachelor's degree	5	None
15-1252	Software Developers	5,971	7,374	1,403	23%	\$45.85	\$95,368.00	629	Bachelor's degree	5	None
13-2011	Accountants and Auditors	15,210	16,331	1,121	7%	\$34.29	\$71,323.20	1,550	Bachelor's degree	5	None
11-9111	Medical and Health Services Managers	5,499	6,582	1,083	20%	\$39.75	\$82,680.00	578	Bachelor's degree	5	None
13-1161	Market Research Analysis and Marketing Specialists	6,106	7,171	1,065	17%	\$23.92	\$49,753.60	755	Bachelor's degree	5	None
11-3031	Financial Managers	5,793	6,531	738	13%	\$55.79	\$116,043.20	516	Bachelor's degree	5	None
25-2031	Secondary School Teachers, Except Special and Career/ Technical Education	16,047	16,759	712	4%	\$23.91	\$49,730.00	1,294	Bachelor's degree	5	None
29-1141	Registered Nurses	31,164	31,833	668	2%	\$29.89	\$62,171.20	2,077	Bachelor's degree	5	None
21-1018	Substance Abuse, Behavioral Disorder, and Mental Health Counselors	3,633	4,267	634	17%	\$22.84	\$47,507.20	471	Bachelor's degree	5	None
13-1071	Human Resources Specialists	7,497	8,103	607	8%	\$23.86	\$49,628.80	852	Bachelor's degree	5	None
13-1081	Logisticians	3,307	3,891	583	18%	\$37.25	\$77,480.00	363	Bachelor's degree	5	None
13-1111	Management Analysts	4,592	5,175	583	13%	\$37.80	\$78,624.00	514	Bachelor's degree	5	None
13-1199	Business Operations Specialists, All Other	5,927	6,441	514	9%	\$36.26	\$75,420.80	531	Bachelor's degree	5	None
27-2022	Coaches and Scouts	2,290	2,725	435	19%	\$15.84	\$32,950.00	398	Bachelor's degree	5	None
11-9199	Managers, All Other	2,389	2,691	302	13%	\$43.79	\$91,083.20	231	Bachelor's degree	5	None
17-2112	Industrial Engineers	1,963	2,252	289	15%	\$39.25	\$81,640.00	179	Bachelor's degree	5	None
11-9021	Construction Managers	2,911	3,156	246	8%	\$43.61	\$90,708.80	283	Bachelor's degree	5	Moderate-term on-the-job training
15-1212	Information Security Analysts	960	1,203	243	25%	\$38.39	\$79,851.20	106	Bachelor's degree	5	None
15-1253	Software Quality Assurance Analysts and Testers	1,260	1,486	226	18%	\$23.17	\$48,193.60	130	Bachelor's degree	5	None
21-1021	Child, Family, and School Social Workers	5,760	5,973	213	4%	\$20.13	\$41,870.40	671	Bachelor's degree	5	None
11-3021	Computer and Information Systems Managers	3,165	3,374	209	7%	\$57.70	\$120,016.00	295	Bachelor's degree	5	None
13-1121	Meeting, Convention, and Event Planners	877	1,073	196	22%	\$22.54	\$46,883.20	135	Bachelor's degree	5	None
13-1151	Training and Development Specialists	3,892	4,088	196	5%	\$25.69	\$53,435.20	431	Bachelor's degree	5	None
29-2018	Clinical Laboratory Technologists and Technicians	4,289	4,479	190	4%	\$22.59	\$46,987.20	349	Bachelor's degree	5	None
11-2021	Marketing Managers	1,251	1,439	188	15%	\$50.36	\$104,748.80	132	Bachelor's degree	5	None
15-2051	Data Scientists	1,074	1,262	187	17%	\$36.05	\$74,984.00	123	Bachelor's degree	5	None
13-1082	Project Management Specialists	7,008	7,184	177	3%	\$37.30	\$77,584.00	609	Bachelor's degree	5	None
13-2051	Financial and Investment Analysts	1,636	1,735	99	6%	\$30.62	\$63,689.60	163	Bachelor's degree	5	None
13-2052	Personal Financial Advisors	1,283	1,382	98	8%	\$37.16	\$77,292.80	139	Bachelor's degree	5	Long-term on-the-job training
11-3121	Human Resources Managers	1,339	1,436	97	7%	\$47.59	\$98,987.20	132	Bachelor's degree	5	None
27-1024	Graphic Designers	1,329	1,423	95	7%	\$22.46	\$46,716.80	172	Bachelor's degree	5	None
15-1211	Computer Systems Analysts	3,199	3,292	93	3%	\$38.08	\$79,206.40	305	Bachelor's degree	5	None
41-3031	Securities, Commodities, and Financial Services Sales Agents	2,548	2,636	88	3%	\$23.54	\$48,963.20	269	Bachelor's degree	5	Moderate-term on-the-job training
25-2058	Special Education Teachers, Secondary School	1,768	1,821	52	3%	\$28.94	\$60,190.00	157	Bachelor's degree	5	None
21-1091	Health Education Specialists	884	929	45	5%	\$28.90	\$60,112.00	114	Bachelor's degree	5	None

SOC	DESCRIPTION	2021 JOBS	2030 JOBS	2021-2030 CHANGE	2021-2030 % CHANGE	MEDIAN HOURLY EARNINGS	MEDIAN ANNUAL EARNINGS	AVG. ANNUAL OPENINGS	TYPICAL ENTRY LEVEL	LEVEL	TYPICAL ON-THE-JOB TRAINING
17-2141	Mechanical Engineers	2,232	2,273	41	2%	\$43.43	\$90,334.40	181	Bachelor's degree	5	None
17-2071	Electrical Engineers	1,749	1,770	21	1%	\$47.52	\$98,841.60	161	Bachelor's degree	5	None
15-1244	Network and Computer Systems Administrators	2,550	2,563	13	1%	\$37.03	\$77,022.40	216	Bachelor's degree	5	None
17-2199	Engineers, All Other	1,949	1,958	9	0%	\$45.95	\$95,576.00	172	Bachelor's degree	5	None
19-5011	Occupational Health and Safety Specialists	1,155	1,162	8	1%	\$30.97	\$64,417.60	111	Bachelor's degree	5	None
31-2021	Physical Therapist Assistants	1,367	1,666	299	22%	\$28.81	\$59,924.80	218	Associate's degree	4	None
29-1126	Respiratory Therapists	1,784	2,001	217	12%	\$38.17	\$60,132.80	135	Associate's degree	4	None
29-1292	Dental Hygienists	2,289	2,503	214	9%	\$38.17	\$79,393.60	219	Associate's degree	4	None
29-2056	Veterinary Technologists and Technicians	1,001	1,083	83	8%	\$17.13	\$35,630.40	106	Associate's degree	4	None
29-2034	Radiologic Technologists and Technicians	2,808	2,865	56	2%	\$28.87	\$60,049.60	244	Associate's degree	4	None
53-3032	Heavy and Tractor-Trailer Truck Drivers	24,405	25,172	767	3%	\$22.95	\$47,736.00	3,267	Postsecondary nondegree award	3	Short-term on-the-job training
33-2011	Firefighters	4,734	5,113	379	8%	\$22.85	\$47,528.00	449	Postsecondary nondegree award	3	Long-term on-the-job training
31-9091	Dental Assistants	4,315	4,656	342	8%	\$18.04	\$37,523.20	598	Postsecondary nondegree award	3	None
29-2043	Paramedics	1,630	1,811	181	11%	\$18.58	\$38,646.40	166	Postsecondary nondegree award	3	None
29-2057	Ophthalmic Medical Technicians	1,143	1,268	125	11%	\$17.48	\$36,358.40	114	Postsecondary nondegree award	3	None
49-2022	Telecommunications Equipment Installers and Repairers, Except Line Installers	1,771	1,846	75	4%	\$23.21	\$48,276.80	286	Postsecondary nondegree award	3	Moderate-term on-the-job training
49-9021	Heating, Air Conditioning, and Refrigeration Mechanics and Installers	4,306	4,369	63	1%	\$22.69	\$47,195.20	499	Postsecondary nondegree award	3	Long-term on-the-job training
49-3023	Automotive Service Technicians and Mechanics	7,611	7,666	55	1%	\$22.20	\$46,176.00	850	Postsecondary nondegree award	3	Short-term on-the-job training
29-2055	Surgical Technologists	1,705	1,737	32	2%	\$22.42	\$46,633.60	150	Postsecondary nondegree award	3	None
15-1232	Computer User Support Specialists	6,423	6,437	14	0%	\$22.80	\$47,424.00	609	Some college, no degree	2	None
39-9031	Exercise Trainers and Group Fitness Instructors	2,492	3,833	1,341	54%	\$17.67	\$36,753.60	567	High school diploma or equivalent	1	Short-term on-the-job training
53-3033	Light Truck Drivers	11,122	12,332	1,231	11%	\$17.16	\$35,692.80	1,412	High school diploma or equivalent	1	Short-term on-the-job training
49-9071	Maintenance and Repair Workers, General	15,679	16,751	1,072	7%	\$17.27	\$35,921.60	1,713	High school diploma or equivalent	1	Moderate-term on-the-job training
33-3051	Police and Sheriffs' Patrol Officers	8,872	9,583	711	8%	\$24.27	\$50,481.60	818	High school diploma or equivalent	1	Moderate-term on-the-job training
53-1047	First-Line Supervisors of Transportation and Material Moving Workers, Except Aircraft Cargo Handling Assistants	6,711	7,161	451	7%	\$25.21	\$52,436.80	805	High school diploma or equivalent	1	None
43-6013	Medical Secretaries and Administrative Assistants	8,616	8,948	332	4%	\$17.47	\$36,337.60	1,132	High school diploma or equivalent	1	Moderate-term on-the-job training
41-3091	Sales Representatives of Services, Except Advertising, Insurance, Financial Services, and Travel	9,875	10,196	321	3%	\$23.01	\$47,860.80	1,375	High school diploma or equivalent	1	Moderate-term on-the-job training
47-2111	Electricians	7,566	7,848	283	4%	\$25.12	\$52,249.60	937	High school diploma or equivalent	1	Apprenticeship
49-1011	First-Line Supervisors of Mechanics, Installers, and Repairers	6,959	7,162	203	3%	\$31.20	\$64,896.00	724	High school diploma or equivalent	1	None
13-2082	Tax Preparers	1,183	1,329	146	12%	\$17.02	\$35,401.60	188	High school diploma or equivalent	1	Moderate-term on-the-job training
49-2098	Security and Fire Alarm Systems Installers	1,005	1,150	145	14%	\$22.63	\$47,070.40	164	High school diploma or equivalent	1	Moderate-term on-the-job training
43-5031	Public Safety Telecommunicators	1,984	2,125	141	7%	\$17.48	\$36,358.40	218	High school diploma or equivalent	1	Moderate-term on-the-job training
11-3071	Transportation, Storage, and Distribution Managers	1,230	1,353	123	10%	\$35.80	\$74,464.00	121	High school diploma or equivalent	1	None
41-3021	Insurance Sales Agents	4,838	4,954	116	2%	\$22.60	\$47,008.00	540	High school diploma or equivalent	1	Moderate-term on-the-job training
43-5061	Production, Planning, and Expediting Clerks	5,409	5,521	112	2%	\$22.82	\$47,465.60	683	High school diploma or equivalent	1	Moderate-term on-the-job training
49-9099	Installation, Maintenance, and Repair Workers, All Other	1,109	1,210	101	9%	\$17.96	\$37,356.80	150	High school diploma or equivalent	1	Moderate-term on-the-job training
11-9013	Farmers, Ranchers, and Other Agricultural Managers	2,181	2,283	101	5%	\$17.54	\$36,479.68	306	High school diploma or equivalent	1	Moderate-term on-the-job training
49-9051	Electrical Power-Line Installers and Repairers	2,235	2,330	95	4%	\$23.98	\$62,358.40	280	High school diploma or equivalent	1	Long-term on-the-job training
41-9022	Real Estate Sales Agents	2,903	2,995	92	3%	\$19.02	\$39,561.60	342	High school diploma or equivalent	1	Moderate-term on-the-job training
37-2021	Pest Control Workers	1,119	1,208	89	8%	\$17.21	\$35,796.80	185	High school diploma or equivalent	1	Moderate-term on-the-job training
51-7011	Cabinetmakers and Bench Carpenters	1,174	1,260	86	7%	\$17.29	\$35,963.20	164	High school diploma or equivalent	1	Moderate-term on-the-job training
51-9199	Production Workers, All Other	1,059	1,145	86	8%	\$17.63	\$36,670.40	188	High school diploma or equivalent	1	Moderate-term on-the-job training
51-1011	First-Line Supervisors of Production and Operating Workers	8,847	8,922	74	1%	\$29.58	\$61,526.40	1,021	High school diploma or equivalent	1	None
37-1012	First-Line Supervisors of Landscaping, Lawn Service, and Groundskeeping Workers	1,151	1,214	63	5%	\$20.13	\$41,870.40	148	High school diploma or equivalent	1	None
33-1091	First-Line Supervisors of Security Workers	946	1,000	54	6%	\$22.51	\$46,820.80	117	High school diploma or equivalent	1	None

SOC	DESCRIPTION	2021 JOBS	2030 JOBS	2024-2030 CHANGE	2024-2030 % CHANGE	MEDIAN HOURLY EARNINGS	MEDIAN ANNUAL EARNINGS	AVG ANNUAL OPENINGS	TYPICAL ENTRY LEVEL EDUCATION	LEVEL	TYPICAL ON-THE-JOB TRAINING
51-9124	Coating, Painting, and Spraying Machine Setters, Operators, and Tenders	2,470	2,509	39	2%	\$18.07	\$37,585.60	321	High school diploma or equivalent	1	Moderate-term on-the-job training
43-5032	Dispatchers, Except Police, Fire, and Ambulance	1,902	1,935	33	2%	\$18.46	\$38,396.80	228	High school diploma or equivalent	1	Moderate-term on-the-job training
47-2152	Plumbers, Pipefitters, and Steamfitters	6,013	6,039	25	0%	\$22.83	\$47,486.40	758	High school diploma or equivalent	1	Apprenticeship
47-2221	Structural Iron and Steel Workers	1,251	1,273	21	2%	\$22.97	\$47,777.60	175	High school diploma or equivalent	1	Apprenticeship
51-9011	Chemical Equipment Operators and Tenders	935	952	17	2%	\$23.13	\$48,110.40	129	High school diploma or equivalent	1	Moderate-term on-the-job training
51-8031	Water and Wastewater Treatment Plant and System Operators	2,029	2,042	12	1%	\$18.05	\$37,544.00	243	High school diploma or equivalent	1	Moderate-term on-the-job training
51-9032	Cutting and Slicing Machine Setters, Operators, and Tenders	895	901	6	1%	\$17.92	\$37,273.60	122	High school diploma or equivalent	1	Moderate-term on-the-job training
47-3015	Helpers—Pipelayers, Plumbers, Pipefitters, and Steamfitters	1,265	1,269	4	0%	\$17.35	\$36,088.00	188	High school diploma or equivalent	1	Short-term on-the-job training
53-7051	Industrial Truck and Tractor Operators	7,964	9,422	1,458	18%	\$18.31	\$38,084.80	1,098	No formal educational credential	0	Short-term on-the-job training
51-3023	Slaughteers and Meat Packers	1,851	2,117	266	14%	\$17.63	\$36,670.40	308	No formal educational credential	0	Short-term on-the-job training
53-7081	Refuse and Recyclable Material Collectors	2,092	2,315	222	11%	\$17.89	\$37,211.20	328	No formal educational credential	0	Short-term on-the-job training

44