

Oklahoma Department of Education

Orientation

Agenda



CEC OVERVIEW

- Who is CEC?
- Member Benefits



PROFESSIONAL DEVELOPMENT

- Learning Module
- Virtual Content Expert Check In Sessions



WRAP UP

- Q&A
- Contacts

YOUR CEC MEMBERSHIP

About CEC



102 Year Legacy

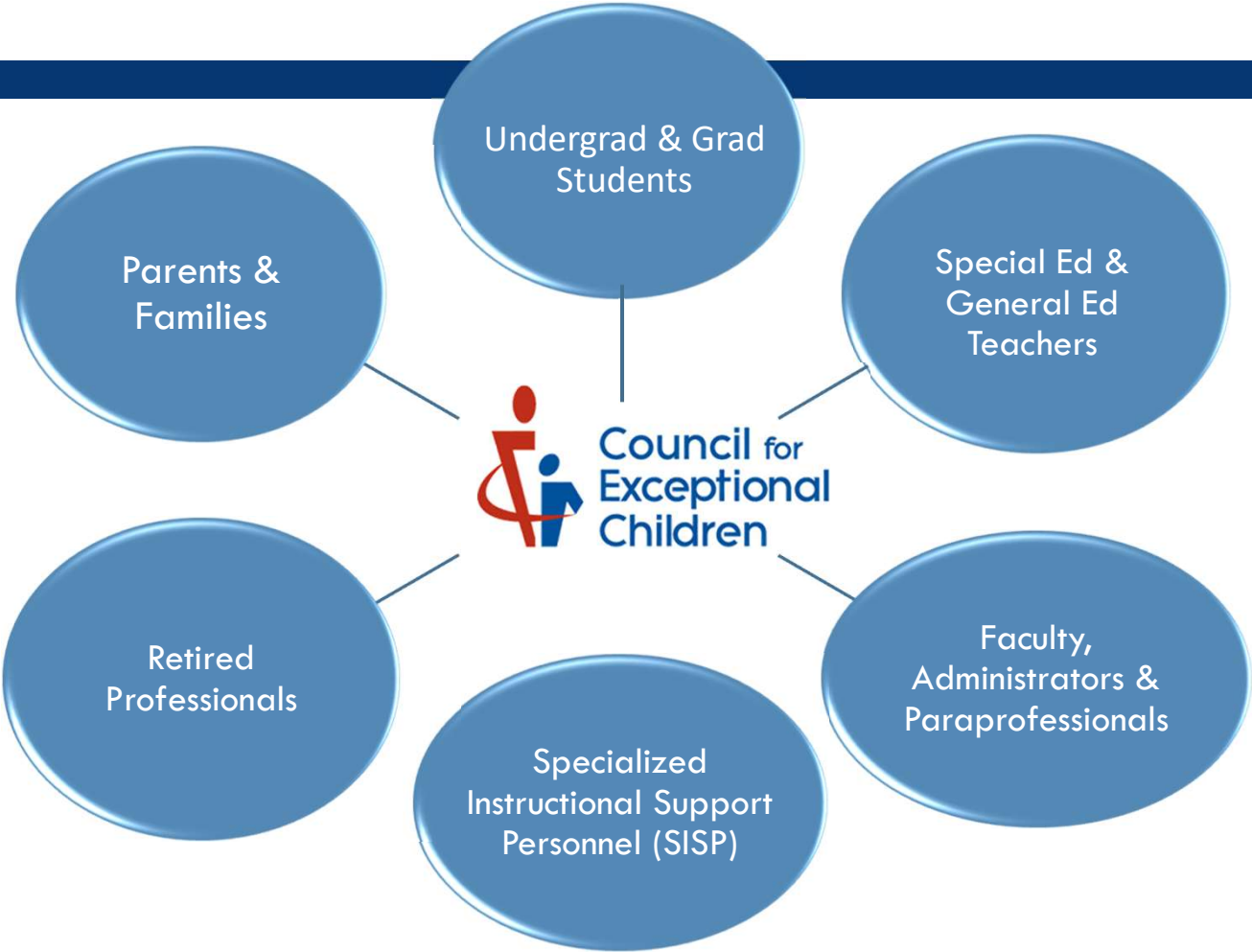
20,000 Members

Advocate for Teachers

Set the Standards

Evidence-Based Continuing Ed.

Our Members



Member Benefits

www.exceptionalchildren.org/benefits

Exploring Your Membership Benefits

- Comprehensive listing of your member benefits
- Direct contact information for key CEC staff

Bookmark this page!

www.exceptionalchildren.org/benefits

The screenshot shows the CEC website's navigation bar with links for About Us, Store, Learning Library, Events, Exceptional Teacher Resource Repository, Donate, Create an Account, Help, and a search icon. Below the navigation bar is a menu with categories: TOPICS, TRAINING AND RESOURCES, STANDARDS, POLICY AND ADVOCACY, and MEMBERSHIP. The MEMBERSHIP menu is expanded, showing 'JOIN' and 'SIGN IN' options. The main content area features a large blue header for 'Membership Benefits Overview'. Below this is a promotional banner for 'Understanding Autism: Evaluate with Precision' featuring books from ASDEP and Hawthorne. The page includes a breadcrumb trail: Home > Membership > Membership Benefits Overview. A paragraph explains that CEC membership is tailored to the user's role in special education. A section titled 'Let's get started!' contains two buttons: 'Activate the Value of Your CEC Membership!' and 'Check Out the CEC Member Advantage Program'. At the bottom, there is a blue bar with the text 'EXPLORE SERVICES'.

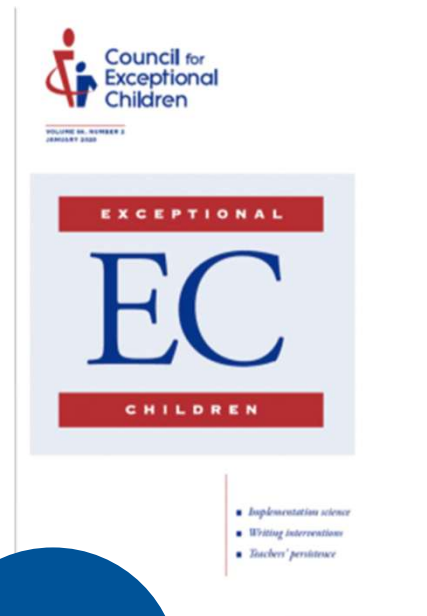
Journals

Exceptional Children

- Quarterly research journal that publishes insightful and pioneering original research that focuses on children with exceptionalities.

Teaching Exceptional Children

- Research-to-practice journal based on current evidence-based practice for use in the classroom



4x per
Year



6x per
Year

Connecting with Others

www.exceptionalchildren.org/benefits

How do I get started?

- Online CECCommunity
- Contacting your Local/Regional Units & Chapters

Connecting With Others

| | |
|---|---|
| <p>CECommunity and the All-Member Forum</p> <p>The CECCommunity, CEC's online members-only forum, is where thousands of your special education colleagues are here for you 24/7. No question is too big or too small!</p> <p>Learn More</p> | <p>For questions, contact: CEC Member Services (888) 232-7733 service@exceptionalchildren.org</p> <p>Chat live using the chat feature in the bottom-right corner.</p> |
| <p>Local/Regional Units & Chapters</p> <p>Your Unit is here for you to connect with colleagues nearby, access local resources, engage in public policy efforts that impact your practice and your students directly, and attend local meet-ups and professional development events.</p> <p>Units</p> <p>Student Chapters</p> | <p>For questions, contact: Connect with your Unit leader. You can find their contact information here.</p> <p>For student chapters, contact: Brannan Meyers Director of Component Relations bmeyers@exceptionalchildren.org</p> |

The screenshot shows the CECCommunity website. At the top, there is a navigation bar with links for Home, All-Member Forum, Communities, Directory, Browse, Participate, and How-Tos. A search bar is also present. Below the navigation is a banner for "Effective and High-Leverage Practices for Paraeducators" featuring a group of people. A welcome message reads "Welcome! We're glad you're here." Below this is a "Latest Discussions" section with a dropdown menu set to "Most Recent". Two discussion threads are visible: "Personal recommendations, products from Different Roads" by Jhilly_Saxton and "Charter School EC Teacher" by Margaret_Dintri. On the right side, there is a "CEC Member Services" section with contact information: Phone: 1-888-232-7733, Email: service@exceptionalchildren.org, and a chat link. A footer note states: "CEC Member Services is available Monday to Friday, 9:00am to 5:00pm Eastern. Closed on weekends and holidays." A "Let's get started." button is located at the bottom right.

CECommunity

- **Automatically added to the All-Member Forum**
- Meet other special educators
- Share knowledge and resources
- Browse other communities
- Connect directly with colleagues and others
- See a member directory, and more!

Council for Exceptional Children

TOPICS | TRAINING AND RESOURCES | STANDARDS | POLICY AND ADVOCACY | **MEMBERSHIP** | JOIN | SIGN IN

MEMBERSHIP
Individual Membership
Group Membership
Benefits At-A-Glance

ENGAGE
CECommunity All-Member Forum
Become a Volunteer
Special Interest Divisions
Units
Student Chapters
Affinity Groups
Resources for Unit, Division, and Chapter Leaders
Leadership CEC
CEC Awards
MyCEC App

GET SUPPORT
Forms
Frequently Asked Questions
Contact

CECommunity All-Member Forum
Share real-world answers, resources, and support on CEC's online members-only forum.
LEARN MORE

CEC | Contact Us | Code of Conduct

John Doe
john.e.doe@cecschools.edu
40%

Profile | Communities

Logout

CEC | Contact Us | Code of Conduct

CECommunity
Where special educators connect, collaborate, and share

Home | All-Member Forum | **Communities** | Directory | Browse | My Profile | How-Tos

“Effective and High-Leverage Practices for Paraeducators”

Welcome! We're glad you're here.

Welcome to the CECommunity, where you can connect, collaborate and share with the best minds in special and gifted education—your fellow CEC members!

Latest Discussions

Most Recent

Personal recommendations, products from Different Roads
By [Whitney Savage](#), an hour ago
Posted in [All Member Forum](#)
Hello All, I get the catalog Different Roads, and I'm interested in possibly buy a few books/curriculum. But, I'd like to hear if anyone has used them, and what they think. Here are the specific titles I'm looking at: Executive Function in the ...

Charter School EC Teacher
By [Margaret Foster](#), 3 hours ago
Posted in [All Member Forum](#)
I'm an experienced special education teacher in public school, but recently took a position in a charter school. Is there anything I should be aware of as charter schools do things a little differently? Any great resources? Sent from Yahoo Mail

CEC Member Services
Phone: 1-888-232-7733
Email: service@exceptionalchildren.org
Chat: [Visit Our Website](#) (bottom-right corner)
Web: Visit the [CEC Customer Service Center](#)

CEC Member Services is available Monday to Friday, 9:00am to 5:00pm Eastern. Closed on weekends and holidays.

Let's get started.

Connecting With Others Locally

Units

- Our local (state- or provincial-level) are for meeting and collaborating locally within your state/province
 - Almost all states/provinces have one
- Local/regional events
- Updates
- Networking
- Volunteer Opportunities

You Are Already a Member!



Special Interest Divisions

www.exceptionalchildren.org/divisions

Meet Others Based on Topics that Interest You

- Connect on topic of interest
- 18 Special Interest Divisions
- Brings quality content and collaboration opportunities
- Many have an annual conference
- Some also have journals

**An Additional Fee is
Required for All
Divisions**



Volunteer with CEC

Policy and Advocacy

- View current policy agendas
- Stay informed with Policy Insider
- Visit the Legislative Action Center
- Take action in the Child and Youth Action Network Center

Council for Exceptional Children

TOPICS | TRAINING AND RESOURCES | STANDARDS | **POLICY AND ADVOCACY** | MEMBERSHIP

JOIN
SIGN IN

OUR POLICY WORK

- Our Policy Agenda
- Position Statements
- White Papers
- Children and Youth Action Network
- Special Education Legislative Summit
- Coalitions

TAKE ACTION

- Advocacy Basics
- Legislative Action Center
- Special Education Legislative Summit

Policy Insider

READ BLOG

Home > Legislative Action Center

Support School Mental Health

Rebuild the Special Educator Workforce

Support School Mental Health

- Policy Insider**
Learn about the special and gifted education issues Congress and the administration are considering by reading CEC's Policy Insider. Sign up today to receive weekly e-mail updates!
[STAY INFORMED](#)
- Take Action**
Use CEC's Legislative Action Center to take action on a number of legislative issues by filling out your information and sending a letter to your Members of Congress.
[TAKE ACTION](#)
- Advocacy Basics**
Find out how you can advocate for infants, toddlers, children, and youth with exceptionalities and the professionals who support them 365 days a year.
[LEARN MORE](#)
- Special Education Legislative Summit**
- Child and Youth Action Network**
- Position Statements**

Safe Sender List

www.exceptionalchildren.org/safesender

Adding CEC to Your Safe Sender Email List

- Ensures we can communicate and make the most of your membership
- **Easy, one-time actions**
- Sorted by your email provider
- Takes just a couple of minutes
- **Works best with personal emails!**

Questions? Contact CEC Member Services.

Safe Sender Instructions

M.A. SPECIAL EDUCATION



As a CEC member, your inbox is always fresh with regular updates on the latest in special education. From community tips to professional development you can use, make sure you're never missing the resources, support, and information you need! To make sure we get in your inbox, find your email program below for instructions on how to add us to your address book or safe sender list.

Customer Service Center

INSTRUCTIONS BY PROGRAM

Outlook



Professional Development Supports

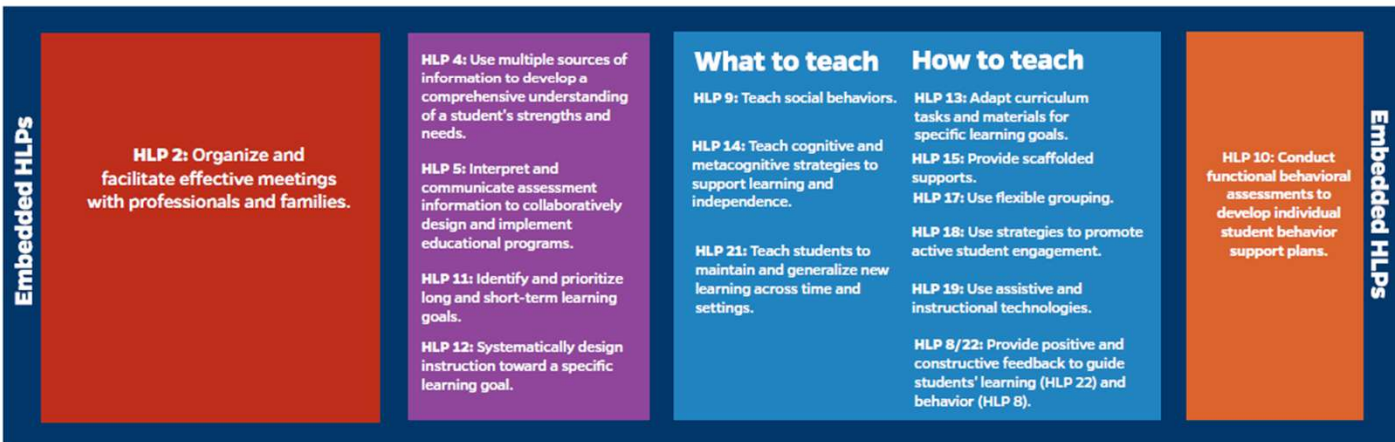
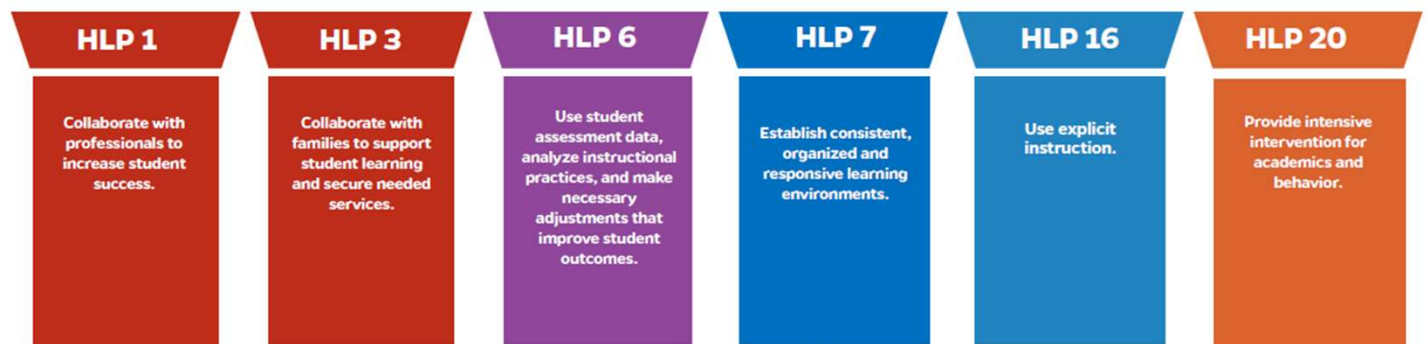
What are HLPs?

HLPs are a small number of foundational practices that should be in the repertoire of every educator who teaches students with disabilities.





HLP Pillars



HLP Webinar Series

On-Demand Content

January



| Learning Domain | Topic |
|----------------------|---|
| Collaboration | Collaborating with Parents, Families, and Caregivers (60 mins) |
| Data-Driven Planning | Using Assessment Data – Part 1: Collection Data and Selecting Strategies (60 mins) |
| Data-Driven Planning | Using Assessment Data – Part 2: Evaluating Success and Making Adaptations (60 mins) |

| Learning Domain | Topic |
|--|---|
| Instruction for Behavior and Academics | Best Practices in Planning and Implementing Specially Designed Instruction (90 mins) |
| Instruction for Behavior and Academics | Teach Students to Maintain and Generalize New Learning Across Time and Settings (30 mins) |
| Instruction for Behavior and Academics | Explicit Instruction and Feedback (120 mins) |



February

March



| Learning Domain | Topic |
|--|--|
| Instruction for Behavior and Academics | Principles of Effective Feedback: More Than Yes, Good Job, & the Affirmative Head Nod (60 mins) |
| Instruction for Behavior and Academics | HLPs 15 & 18- Scaffolded Supports and Strategies to Increase Student Engagement (120 mins) |
| Intensify and Intervene | Developing Educationally Meaningful & Legally Defensible IEPs: Process and Content Suggestions (60 mins) |

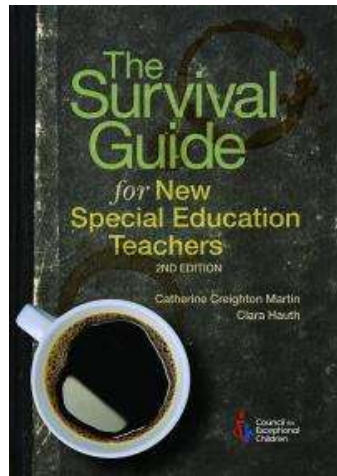
Live Virtual Ask the Expert Sessions

- January 16, 2025: HLP Focus Area – Kick Off
- February 20, 2025: Focus Area – Collaboration and Data-Driven Planning
- March 27, 2025: HLP Focus Areas – Instruction for Behavior & Academics (Part 1)
- April 17, 2025: HLP Focus Areas – Instruction for Behavior & Academics (Part 2) and Intervene and Intensify

Book:

The Survival Guide for New Special Education Teachers

By: Catherine Creighton Martin, Clara Hauth



- ❖ Bridge the gap between training and classroom practice
- ❖ Focuses on the needs and priorities of special educators,
- ❖ Offers practical guidance on such topics as
 - ❖ roles and responsibilities,
 - ❖ school environment and culture,
 - ❖ classroom organization and management,
 - ❖ collaboration with other professionals,
 - ❖ and individual professional development

WRAP-UP

CEC Member Services Support

22



(888) 232-7733 (Toll Free)
(703) 620-3660 (International)
or call using your Telecommunications Relay Provider



exceptionalchildren.org



exceptionalchildren.org/help



service@exceptionalchildren.org

Thank
You

CEC Member Services is available Monday to
Friday from 9:00am to 5:00pm Eastern.