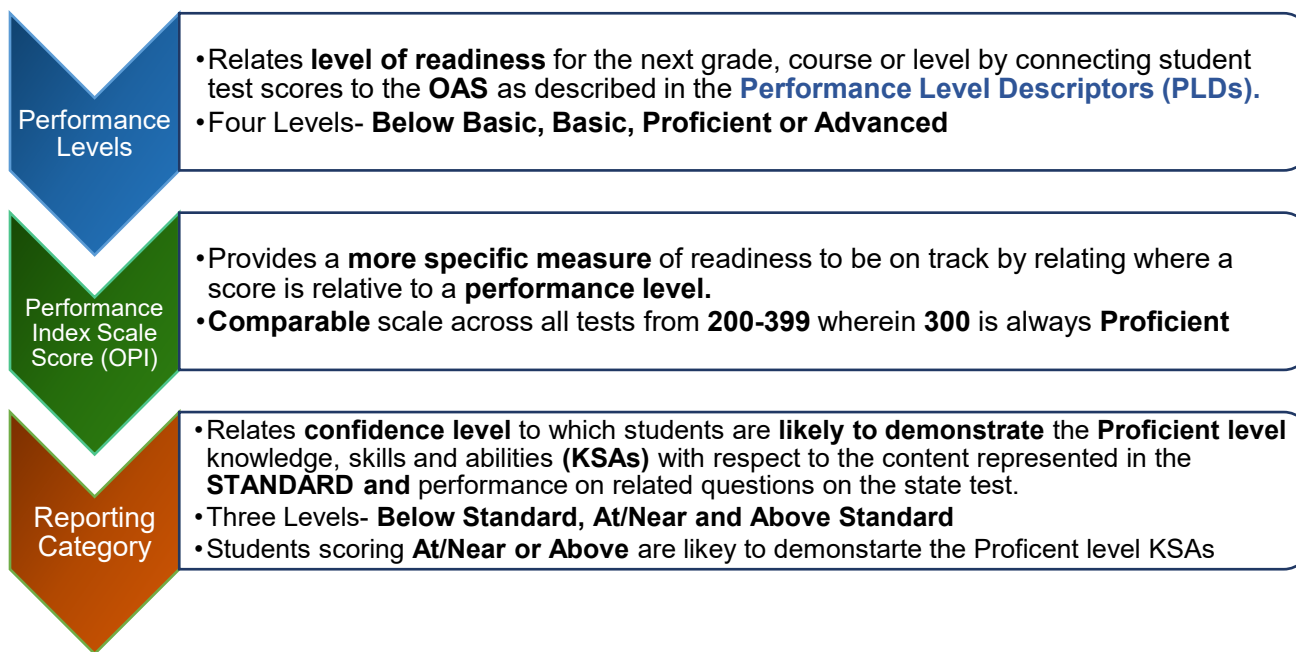


How State Test Scores Can Help School Systems Improve, Connect with Families and Support Students

Thank you all for your work in helping students participate on the state assessment. These tests help everyone understand where our students are today, especially during these unprecedented times. State tests traditionally serve as a snapshot that helps schools and districts evaluate their instructional programs by providing information about student readiness in math, English language arts, and science. State test scores provide three levels of information about performance: **Performance Levels**, **Performance Index Scale Scores (OPI)**, and **Reporting Categories** as explained in the graphic below.



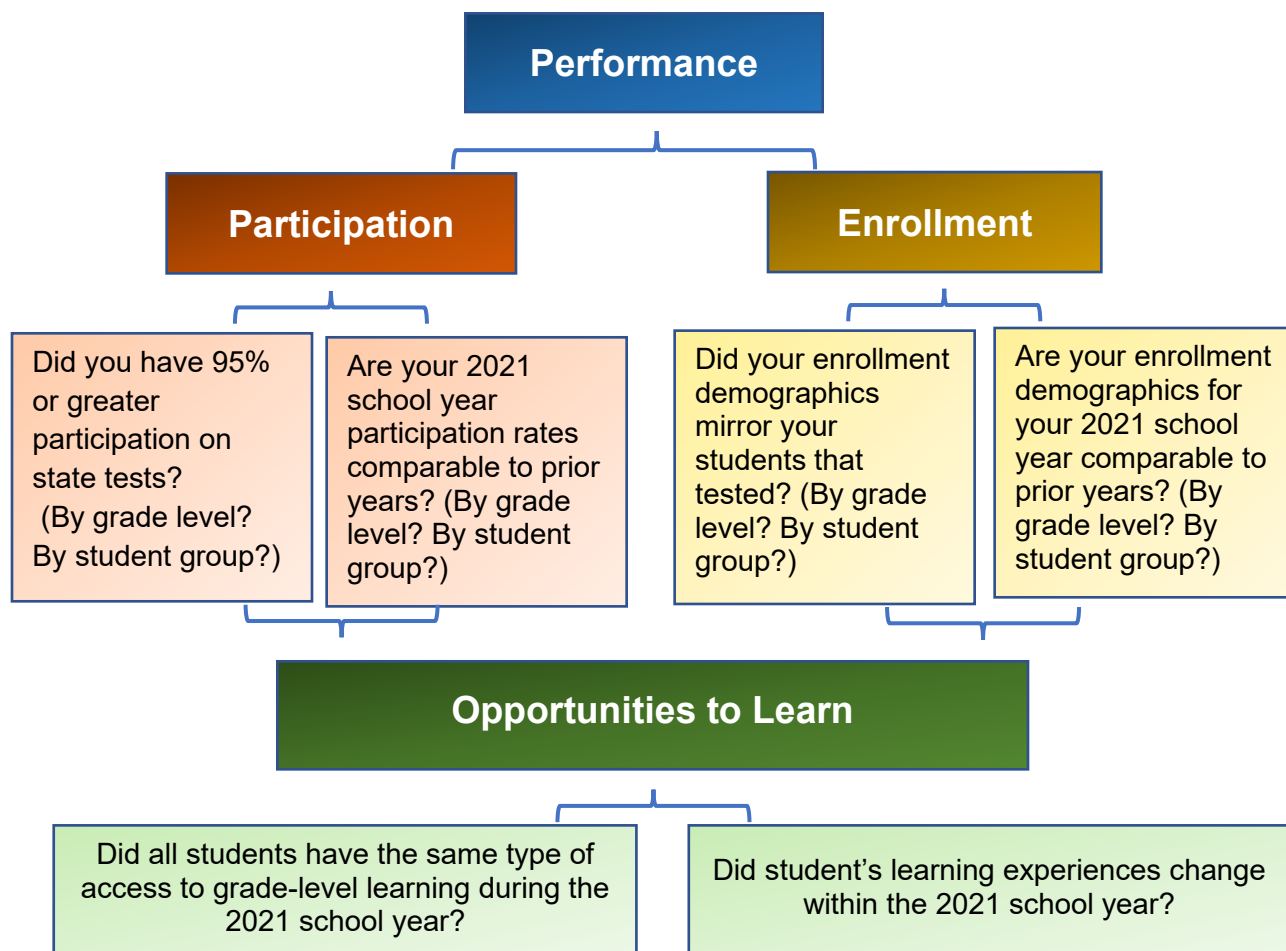
This year, it is particularly important to consider other information when interpreting state test scores from the 2021 school year administration. **We urge caution when examining summary reports because of the possibility of uneven participation rates or because of changes to learning conditions that may have been disrupted by the pandemic.** The standard participation threshold is 95%. When participation falls below that level, inferences about overall performance are uncertain. Therefore, it is imperative that other information (e.g., opportunity to learn, mode of learning, access to grade-level content, attendance, course grades, etc.) be considered when interpreting your data to plan next steps. Additionally, because of the unique conditions due to any COVID-related disruptions, we ask that you please consider your local context before comparing 2021 data to previous years or other school sites. This toolkit is designed to support you in this work so that you can support families, message stakeholders, and plan actionable next steps.



How State Test Scores Can Help School Systems Improve, Connect with Families and Support Students

Considerations for reviewing and interpreting your school site's 2021 test scores

Schools and districts typically use state testing data to identify strengths and gaps in their curricular and instructional programs. This year we are particularly concerned about variations in opportunities to learn and who was able to test. Even though tests provide objective information to interpret performance data, we must understand who tested compared with who was enrolled and then consider variations in learning across student groups as shown in the graphic below.



Understanding the students who tested, allows schools and districts to determine what group comparisons are appropriate and defensible. In addition, these scores can help educators and administrators better understand how to provide students with grade-level content to help them grow this school year.

We hope this toolkit can provide a starting point of questions to consider while connecting resources when working with families, educators, and stakeholders.

How State Test Scores Can Help School Systems Improve, Connect with Families and Support Students

Connecting with Families to Support Students

How can we use state test score reports to work with families and support students?

In any year, a single test score does not provide a complete measure of student achievement. This year it is particularly important to use other information about a student's experience (e.g., learning environment, access to grade-level content, attendance, course grades, etc.) to provide a more complete picture of what students learned this past year. Therefore, when working with families, consider how COVID-19 may have impacted a student's learning,

Paper reports for each student in grades 3-8 who took a state test in the spring of the 2021 school will be available in the fall. Paper reports provide an opportunity to talk with families about their student's progress and next steps. Additionally, a student's test scores are also available to families through the Oklahoma School Testing Program (OSTP) [Family Portal](#) through a secure account.

What tools are available to support this work

[Sample Logins](#) to be used by educators so that they know what is in the portal

[Parent Portal Overview video](#) shows families how to access the portal

[Understanding Your Student's Scores](#) provides a tool to support families in interpreting scores

[Oklahoma Family Guides](#) provides ways families can support students at home

School Site Support

Where can I find my school site's test scores and participation rates?

Different levels of performance data are available through the [OSTP Data Portal](#) and the Accountability Reporting Application in [Single Sign-On](#) as shown.



The [OSTP Data Portal](#) aggregates different reports and displays OSTP performance related data by grade and content area. .

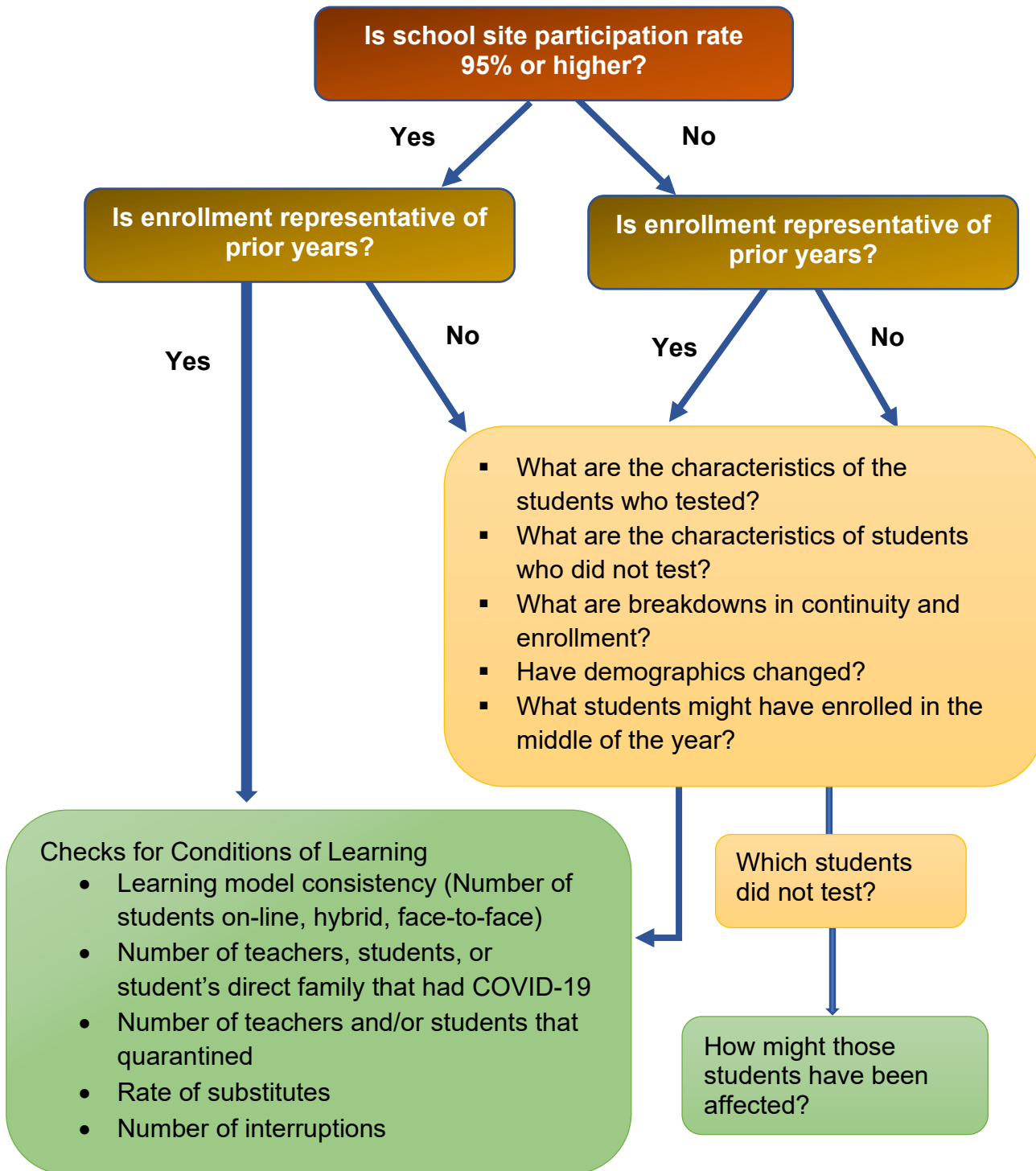


The [Accountability Reporting Application](#) displays participation rates on the Report tab and Student level data on the Assessments tab.

Note: Access for both the OSTP Portal and Accountability Reporting application are granted through your district.

How State Test Scores Can Help School Systems Improve, Connect with Families and Support Students

As previously mentioned, to interpret performance, we must first understand who tested, how enrollment compares to prior years and variations in student learning experiences. Participation rates are displayed in the Accountability Reporting Application on the [Contextual Data](#) → [Assessment Performance](#) tab in [Reports](#).



How State Test Scores Can Help School Systems Improve, Connect with Families and Support Students

What should we consider when looking at participation rate, enrollment, and opportunities to learn?

Participation

Research has shown that when participation rates drop below the 95% threshold for any level of reporting (e.g. school, district, student group), there is a potential that results are not accurate signals of student performance. Therefore, please consider who participated and who did not when interpreting your scores.

- If participation rates were 95% or higher, were there one or more student group/s that had much lower participation rates than other groups?
- If participation rates were less than 95%, were participation rates comparable across all student groups?
- Were the most vulnerable groups (e.g., economically disadvantaged, English learner) underrepresented in participation?

Enrollment

Research concluded that the biggest challenge states, districts and schools will face when interpreting SY 2021 state test scores involves the change in the composition of the tested population in 2021 compared to prior years. Because of this, **please consider how your enrollment and demographics may have changed when interpreting your scores.**

- Were there big changes in the demographics of the students that tested this year compared to prior years?
- Did the most vulnerable groups (e.g., economically disadvantaged, English learner) have the biggest change in enrollment?

Opportunities to Learn

Early studies show that the disparities between student groups that existed before the pandemic—in access, opportunities, and outcomes—may have been exacerbated due to COVID-19. Because of this, please consider how a student’s learning experiences may have differed from a “typical year.”

- Did students have limited access to resources to participate in blended or virtual learning?
- Did disruptions lessen instructional time?
- Did students have access to learning supports (e.g., tutoring or student services)?
- Were the most vulnerable groups (e.g., economically disadvantaged, English learner) more impacted than other groups?



How State Test Scores Can Help School Systems Improve, Connect with Families and Support Students

Actions we can take

- ✓ Consider which students did not test and use their local assessment and attendance data to plan on-grade level supports.
- ✓ Utilize the resources on the [Oklahoma Ready Together](#) website to support local needs and planning around these areas:
 - [Student Learning and Success](#)
 - [Prioritizing Health and Well Being](#)
 - [Ensuring Equity for All](#)
 - [Engaging Families and Communities](#)
 - [Supporting Teachers and Leaders](#)
- ✓ If you had 95% participation for a grade level and the participation is representative of enrollment, we can be relatively confident that the performance is reflective of the group, therefore you can
 - Compare performance by Reporting Category on the state test to local assessment data to gauge horizontal alignment and make adjustments using the [Curriculum Frameworks](#).
 - Use local assessment and Reporting Category performance data and the vertical progressions for [English language arts](#), [math](#) and [science](#) to support concepts and skills that may not have been mastered.
- ✓ Attend or register to attend [TeleEDGE Echo](#) virtual sessions to connect and collaborate around a problem of practice related to COVID-19 disruptions and next steps.

References

Council of Chief State School Officers (2021) *Restart & Recovery: Assessments in Spring 2021*. <https://www.nciea.org/sites/default/files/publications/Assessments-Spring-2021.pdf>

Domaleski, C., D'Brot, J., Marion, S. & Boyer, M. (2021) Sensible reporting of spring 2021 state assessment results. *National Center for the Improvement of Educational Assessment*, Dover, New Hampshire. <https://www.nciea.org/sites/default/files/inline-files/CFA-SensibleReportingSpring21-R2.pdf>

