

# Weekly Wave

Data & Information Systems



**OKLAHOMA**  
Education



# Updates

- 2020-2021 Enrollments
- Updated FAQs

# Reminders

- STN Wizard
  - Matches
- Ownership wizard
  - Conflicts within the district/same site
- EdPlan

# Reminders

- <https://sde.ok.gov/student-information-documents-and-guides>

## Current

### Wave Training and Weekly Wave Powerpoints:

- Weekly Wave (August 13, 2020) | [PDF](#) | [Video](#) | Last Updated August 2020 **New**
- Weekly Wave (August 06, 2020) | [PDF](#) | [Video](#) | Last Updated August 2020 **New**
- Weekly Wave (July 30, 2020) | [PDF](#) | [Video](#) | Last Updated July 2020 **New**
- Weekly Wave (July 23, 2020) | [PDF](#) | [Video](#) | Last Updated July 2020

### Requirements Documents:

- Enrollment and Attendance Guidance 2020 - 2021 | [PDF](#) | Last Updated July 30, 2020 **New**
- Enrollment and Attendance Guidance - Questions and Answers | [PDF](#) | Last updated August 13, 2020 **New**
- Guidance for Attendance and Suspensions | [PDF](#) | Last Updated August 2018
- Reporting Requirements Document 2020-2021 | [Web page](#) | [PDF](#) | Last Updated August 2020 **New**
- Wave Requirements Document (Version 1.12) | [Web page](#) | [How to Guide](#) | Last Updated May 2020

### Report Specific:

- FQSR/ASR Guidance | [Webpage](#) | [Videos](#) | Last updated May 2020
- October 1 Consolidated Report Guidance | [Webpage](#) | Last Updated September 2019

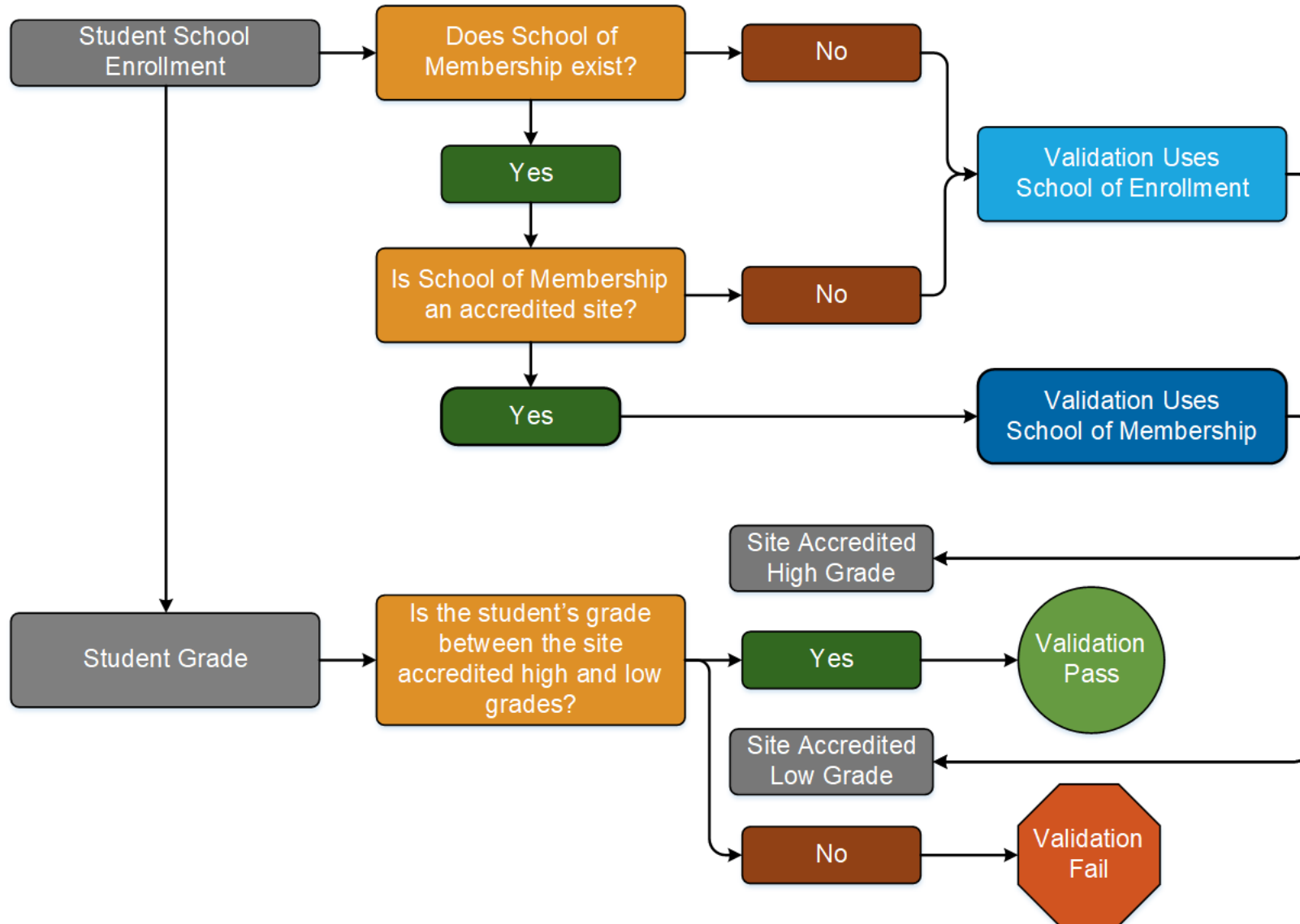
### Data Validation Guides:

- English Proficiency Coding Guidance | [PDF](#) | Last updated April 2020
- Free, Reduced, and Not Applicable Lunch Coding Guidance | [PDF](#) | Last updated May 2020
- STN Assignment Guidance | [PDF](#) | Last updated July 2020 **New**
- Attendance and Enrollment Guidance | [PDF](#) | Last updated July 2020 **New**
- Title I Guidance | [PDF](#) | Last updated August 2020 **New**

### Other:

- Data Request Schedule in Plain English | [PDF](#) | Last updated June 2020 **New**

# New Grade Level Validation Guide



# Teams Collaboration

- Using Microsoft Teams to collaborate with the Data & Information System office
  - Sign up link on Wave homepage

# Questions

- [StudentDataInfo@sde.ok.gov](mailto:StudentDataInfo@sde.ok.gov)
- <https://sde.ok.gov/student-information-documents-and-guides>