



**CTB**



# Oklahoma Online Testing Readiness Report Spring 2014

## Daily Summary – March 17, 2014

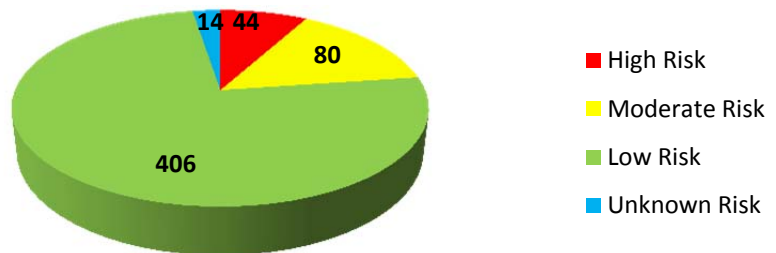
## Section 1: Executive Summary:

This report provides a daily summary of the site readiness preparations for Oklahoma’s online testing in spring 2014. An overview of the overall site readiness checkpoint process is provided in Section 2 of this report.

Each district in Oklahoma has been assigned a risk level for online testing based on their system/network infrastructure and results/follow-up from the statewide readiness test. Details of the approach for assigning risk are provided in Section 3 of this report. The current district-level risks for online testing are summarized below.

### Risk Count as of 3/17/2014

High Risk	44
Moderate Risk	80
Low Risk	406
Unknown Risk	14
Total	544



Two districts (Okmulgee and Tulsa) have been moved from the High Risk category to the Low Risk category after responding that reported issues have been resolved. Details of each district’s risk level are provided in Section 4 of this report.

Current actions underway by CTB include:

- Contact each district identified as High or Moderate Risk in order to determine if risk factors have been mitigated and update the risk assessment as appropriate.
- Arrange for field engineer visits to districts where assistance is needed in resolving issues identified during the statewide readiness test.

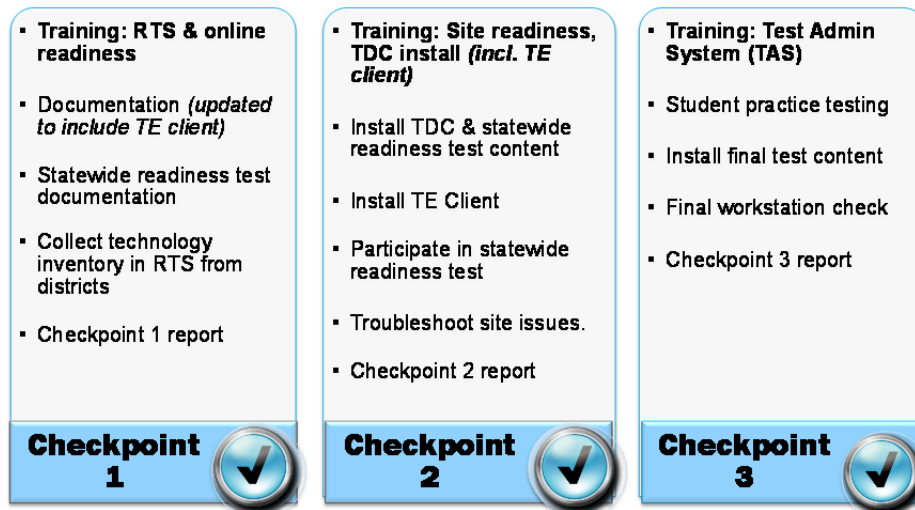
Current actions recommended for the Oklahoma State Department of Education include:

- Review the “Unknown Risk” districts and identify districts that have been consolidated into other districts so that these can be removed from the risk assessment.
- Reach out to the remaining districts in this category to determine how these districts will certify their readiness for online testing.

## Section 2: Online Testing Readiness Process

CTB uses a three-step checkpoint process to ensure that all online testing sites are ready for the test administration prior to the testing window. CTB works with the Oklahoma State Department of Education (SDE) and the district test/technology coordinators to monitor the readiness progress across all districts.

### 2013-14 Readiness Checkpoints



#### **Checkpoint 1**

An initial check is conducted on each site's readiness to test online using the Registration and Technology Survey (RTS) system. RTS is a web-based application hosted by CTB that is used to capture an inventory of technology systems and network infrastructure at each school. This data is evaluated to ensure that the systems and network infrastructure meet the minimum requirements for online testing.

#### **Checkpoint 2**

The Test Delivery Client software is installed and a statewide readiness test is conducted. The statewide readiness test is a short practice test used to validate that each site's networks and workstations are ready for testing. Results of the statewide readiness test and the RTS data collected in Checkpoint 1 are evaluated to determine the risk level for each district to conduct full-scale online operational testing. Actions are taken to remediate issues experienced in the statewide readiness test, and reduce their risk level for online testing.

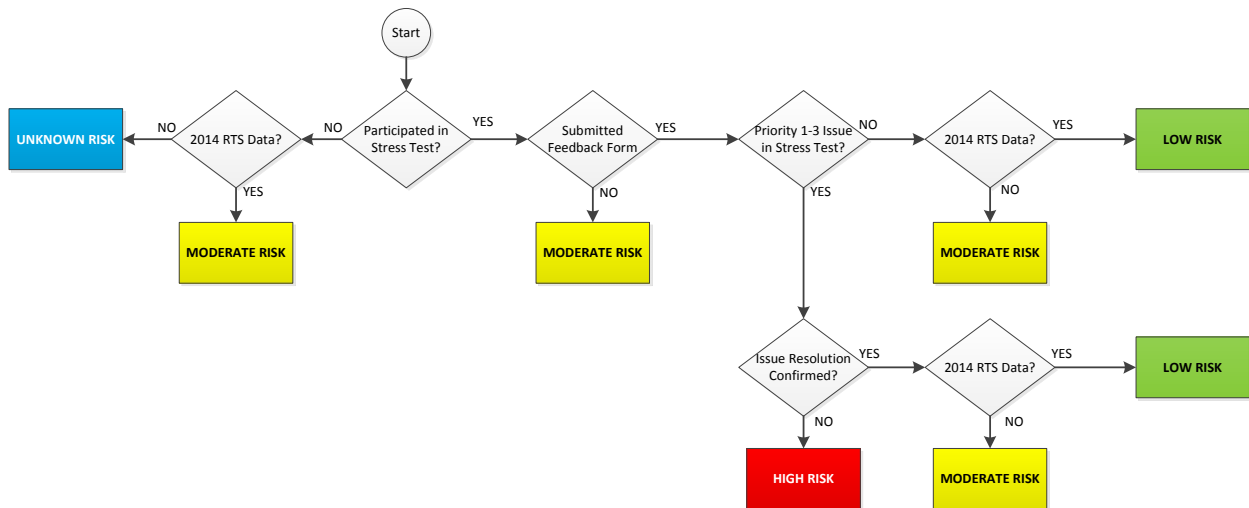
#### **Checkpoint 3**

Activities in this phase include Test Administration site training, District Assessment Coordinator training, practice testing, and completing the final workstation tests at each site. At the conclusion of the final workstation test, sites are asked to access the Readiness and Technology Survey to confirm that the site has completed Checkpoint 3 and that they are ready to participate in the online assessment.

### Section 3: Risk Assessment

Each district is assigned a readiness risk level indicator based on the logic diagram below utilizing the following data for each district:

1. 2014 RTS survey data
2. Statewide readiness test completion status
3. Statewide readiness test feedback form



There are four risk level categories:

1. **High:** District had significant issues during the readiness test, and resolution of these issues has not been confirmed.
2. **Moderate:** a) District has submitted RTS survey data but did not participate in the readiness test, or b) District participated in the readiness test but either provided no feedback, did not submit RTS data, or has not confirmed resolution of issues experienced during the readiness test.
3. **Low:** District has completed all required activities with no known outstanding issues.
4. **Unknown:** District has not submitted RTS survey data and did not participate in the readiness test.

Risk levels are updated daily based on additional information received regarding the resolution of issues experienced during the statewide readiness test.

## Section 4: District Level Readiness Analysis

It is desirable for every district to achieve a risk level “Low” prior to the operational testing online window. The current percentage breakout by risk category is as follows:

Risk Level	# Districts	% Districts
High	44	8%
Moderate	80	15%
Low	406	74%
Unknown	14	3%
Total	548	100%

Each risk level category requires a unique set of actions.

**High:** These districts reported high severity issues during the statewide readiness test, and there has not yet been confirmation that these issues have been resolved. CTB is contacting their technology coordinators to determine whether the district has resolved or mitigated the issues reported during the readiness test. If such confirmation is received, their risk level will be reduced. If the issue is still unresolved, CTB will offer to dispatch a Field Engineer to the site to assist with the resolution.

**Moderate:** a) Some districts submitted RTS data but did not participate in the readiness test. No further change in risk level will be made. b) Some districts participated in the readiness test but either provided no feedback, did not submit RTS data, or have not confirmed resolution of issues experienced during the readiness test. CTB is contacting their technology coordinators to obtain feedback on their readiness test experience and to confirm resolution of any outstanding issues. If such confirmation is received, their risk level will be reduced. If the issue is still unresolved, CTB will offer to dispatch a Field Engineer to the site to assist with the resolution.

**Low:** These districts have completed all required activities to date with no known outstanding issues.

**Unknown:** These districts did not participate in the statewide readiness test and did not complete the RTS survey during the survey window, so CTB has no information regarding the readiness or capacity for administering the 2014 operational test. These districts are being referred to SDE to confirm that these districts still exist as separate entities and to reach out to them to confirm their testing plans.

The following pages provide the current risk level assessment for each district.

DISTRICT_ID	DISTRICT_NAME	Provided RTS Data	Participated in Readiness Test	Readiness Test Priority Level	Issue Resolution Status	Risk Level
03I026	CANEY	YES	YES	3	NO	High Risk
05I031	SAYRE	YES	YES	3	NO	High Risk
09C162	MAPLE	YES	YES	3	NO	High Risk
18I006	KETCHUM	YES	YES	3	NO	High Risk
19I005	MOUNDS	YES	YES	3	NO	High Risk
21C014	LEACH	YES	YES	3	NO	High Risk
23I002	FARGO	YES	YES	1	NO	High Risk
24I057	ENID	YES	YES	1	No	High Risk
24I094	COVINGTON-DOUGLAS	YES	YES	3	NO	High Risk
26C096	MIDDLEBERG	YES	YES	3	NO	High Risk
26I051	NINNEKAH	YES	YES	3	NO	High Risk
26I095	BRIDGE CREEK	YES	YES	3	NO	High Risk
33I001	NAVAJO	YES	YES	3	NO	High Risk
34C003	TERRAL	YES	YES	3	NO	High Risk
37I002	DOVER	NO	YES	3	NO	High Risk
38I003	MOUNTAIN VIEW-GOTEBO	YES	YES	3	NO	High Risk
39I001	WILBURTON	YES	YES	3	NO	High Risk
40C014	HODGEN	YES	YES	3	NO	High Risk
40I002	SPIRO	YES	YES	3	NO	High Risk
40I020	PANAMA	YES	YES	3	NO	High Risk
40I052	TALIHINA	YES	YES	3	NO	High Risk
46I017	LOCUST GROVE	YES	YES	2	NO	High Risk
49C016	STIDHAM	YES	YES	3	NO	High Risk
49I027	MIDWAY	NO	YES	3	NO	High Risk
51I088	PORUM	YES	YES	3	NO	High Risk
55E001	INDEPENDENCE CHARTER	YES	YES	2	NO	High Risk
55I003	LUTHER	YES	YES	3	NO	High Risk
55I006	DEER CREEK	YES	YES	3	NO	High Risk
55I089	OKLAHOMA CITY PUBLIC SCHO	YES	YES	3	NO	High Risk
56C011	TWIN HILLS	YES	YES	3	NO	High Risk
57I030	WYNONA	YES	YES	3	NO	High Risk
58I031	FAIRLAND	YES	YES	3	NO	High Risk
60I101	GLENCOE	YES	YES	3	NO	High Risk
61I030	SAVANNA	YES	YES	3	NO	High Risk
66C009	JUSTUS-TIAWAH	YES	YES	1	NO	High Risk
66I002	CATOOSA	YES	YES	3	NO	High Risk
66I008	VERDIGRIS	YES	YES	3	NO	High Risk
67I002	WEWOKA	YES	YES	3	NO	High Risk
68C001	LIBERTY	YES	YES	3	NO	High Risk
69I034	CENTRAL HIGH	NO	YES	2	NO	High Risk
70I053	TYRONE	YES	YES	3	NO	High Risk
72G972	DOVE SCIENCE TULSA	YES	YES	3	NO	High Risk
72I010	BERRYHILL	YES	YES	3	NO	High Risk
72I013	GLENPOOL	YES	YES	3	NO	High Risk
01C019	PEAVINE	NO	YES	5	N/A	Moderate Risk
01C024	ROCKY MOUNTAIN	YES	YES	NO FEEDBACK	NO FEEDBACK	Moderate Risk
01C029	DAHLONEGAH	NO	YES	4	N/A	Moderate Risk
03I007	STRINGTOWN	YES	YES	NO FEEDBACK	NO FEEDBACK	Moderate Risk
03I019	TUSHKA	YES	YES	NO FEEDBACK	NO FEEDBACK	Moderate Risk
04I128	TURPIN	NO	YES	4	N/A	Moderate Risk
07I003	ACHILLE	YES	YES	NO FEEDBACK	NO FEEDBACK	Moderate Risk

DISTRICT_ID	DISTRICT_NAME	Provided RTS Data	Participated in Readiness Test	Readiness Test Priority Level	Issue Resolution Status	Risk Level
08B001	RIVERSIDE INDIAN SCHOOL	YES	NO	NO DATA	NO DATA	Moderate Risk
08I064	CYRIL	YES	NO	NO DATA	NO DATA	Moderate Risk
09I034	EL RENO	YES	NO	NO DATA	NO DATA	Moderate Risk
09I057	UNION CITY	NO	YES	5	N/A	Moderate Risk
11C026	SHADY GROVE	YES	YES	NO FEEDBACK	NO FEEDBACK	Moderate Risk
13I002	BOISE CITY	NO	YES	4	N/A	Moderate Risk
13I011	KEYES	YES	YES	NO FEEDBACK	NO FEEDBACK	Moderate Risk
15C004	COTTONWOOD	YES	NO	NO DATA	NO DATA	Moderate Risk
16C048	FLOWER MOUND	YES	NO	NO DATA	NO DATA	Moderate Risk
16I002	INDIAHOMA	YES	NO	NO DATA	NO DATA	Moderate Risk
16I008	LAWTON	NO	YES	1	RESOLVED	Moderate Risk
18I020	BLUEJACKET	NO	YES	4	N/A	Moderate Risk
19C012	GYPSY	YES	NO	NO DATA	NO DATA	Moderate Risk
19I020	OILTON	YES	YES	NO FEEDBACK	NO FEEDBACK	Moderate Risk
20I007	THOMAS-FAY-CUSTER UNIFIED	YES	YES	NO FEEDBACK	NO FEEDBACK	Moderate Risk
20I099	CLINTON	YES	YES	NO FEEDBACK	NO FEEDBACK	Moderate Risk
22I010	TALOGA	YES	YES	NO FEEDBACK	NO FEEDBACK	Moderate Risk
24I001	WAUKOMIS	YES	NO	NO DATA	NO DATA	Moderate Risk
24I085	DRUMMOND	YES	YES	NO FEEDBACK	NO FEEDBACK	Moderate Risk
25I007	MAYSVILLE	YES	YES	NO FEEDBACK	NO FEEDBACK	Moderate Risk
26I001	CHICKASHA	YES	YES	NO FEEDBACK	NO FEEDBACK	Moderate Risk
26I128	AMBER-POCASSET	YES	YES	NO FEEDBACK	NO FEEDBACK	Moderate Risk
30I004	BUFFALO	YES	YES	NO FEEDBACK	NO FEEDBACK	Moderate Risk
31I013	KINTA	YES	YES	NO FEEDBACK	NO FEEDBACK	Moderate Risk
33I014	DUKE	YES	NO	NO DATA	NO DATA	Moderate Risk
35C007	MANNVILLE	YES	NO	NO DATA	NO DATA	Moderate Risk
36C027	PECKHAM	YES	NO	NO DATA	NO DATA	Moderate Risk
39I002	RED OAK	YES	YES	NO FEEDBACK	NO FEEDBACK	Moderate Risk
39I003	BUFFALO VALLEY	YES	YES	NO FEEDBACK	NO FEEDBACK	Moderate Risk
40C004	SHADY POINT	YES	NO	NO DATA	NO DATA	Moderate Risk
40I017	CAMERON	YES	YES	NO FEEDBACK	NO FEEDBACK	Moderate Risk
40I062	WHITESBORO	YES	YES	NO FEEDBACK	NO FEEDBACK	Moderate Risk
41I001	CHANDLER	YES	YES	NO FEEDBACK	NO FEEDBACK	Moderate Risk
45I002	MADILL	NO	YES	5	N/A	Moderate Risk
46C021	SPAVINAW	YES	NO	NO DATA	NO DATA	Moderate Risk
46I002	ADAIR	NO	YES	4	N/A	Moderate Risk
48C001	FOREST GROVE	YES	YES	NO FEEDBACK	NO FEEDBACK	Moderate Risk
48C023	GLOVER	YES	NO	NO DATA	NO DATA	Moderate Risk
49I064	HANNA	YES	YES	NO FEEDBACK	NO FEEDBACK	Moderate Risk
50H000	OK SCHOOL FOR THE DEAF	YES	NO	NO DATA	NO DATA	Moderate Risk
50I010	DAVIS	YES	YES	NO FEEDBACK	NO FEEDBACK	Moderate Risk
51I002	HASKELL	YES	YES	NO FEEDBACK	NO FEEDBACK	Moderate Risk
53I003	OKLAHOMA UNION	YES	YES	NO FEEDBACK	NO FEEDBACK	Moderate Risk
54I054	GRAHAM-DUSTIN	YES	YES	NO FEEDBACK	NO FEEDBACK	Moderate Risk
55E003	STANLEY HUPFELD	YES	NO	NO DATA	NO DATA	Moderate Risk
55E012	KIPP REACH COLLEGE PREP	NO	YES	NO FEEDBACK	NO FEEDBACK	Moderate Risk
55E013	DOVE SCIENCE ACADEMY ES	YES	NO	NO DATA	NO DATA	Moderate Risk
55E014	OKLAHOMA VIRTUAL CHARTER	NO	YES	NO FEEDBACK	NO FEEDBACK	Moderate Risk
55G001	SANTA FE SOUTH ES CHARTER	YES	NO	NO DATA	NO DATA	Moderate Risk
55I041	WESTERN HEIGHTS	YES	YES	NO FEEDBACK	NO FEEDBACK	Moderate Risk
55I088	BETHANY	NO	YES	1	RESOLVED	Moderate Risk
56I006	SCHULTER	NO	YES	5	N/A	Moderate Risk

DISTRICT_ID	DISTRICT_NAME	Provided RTS Data	Participated in Readiness Test	Readiness Test Priority Level	Issue Resolution Status	Risk Level
57C003	OSAGE HILLS	NO	YES	5	N/A	Moderate Risk
57C007	BOWRING	YES	YES	NO FEEDBACK	NO FEEDBACK	Moderate Risk
57C077	MCCORD	YES	YES	NO FEEDBACK	NO FEEDBACK	Moderate Risk
59C002	JENNINGS	YES	YES	NO FEEDBACK	NO FEEDBACK	Moderate Risk
61C009	KREBS	YES	YES	NO FEEDBACK	NO FEEDBACK	Moderate Risk
61C056	TANNEHILL	YES	YES	NO FEEDBACK	NO FEEDBACK	Moderate Risk
63C029	PLEASANT GROVE	YES	NO	NO DATA	NO DATA	Moderate Risk
63I001	MCCLOUD	YES	YES	NO FEEDBACK	NO FEEDBACK	Moderate Risk
63I005	EARLSBORO	YES	YES	NO FEEDBACK	NO FEEDBACK	Moderate Risk
64C004	TUSKAHOMA	NO	YES	5	N/A	Moderate Risk
64C015	NASHOBA	NO	YES	NO FEEDBACK	NO FEEDBACK	Moderate Risk
64I022	MOYERS	YES	NO	NO DATA	NO DATA	Moderate Risk
66I003	CHELSEA	YES	YES	NO FEEDBACK	NO FEEDBACK	Moderate Risk
67I007	VARNUM	YES	YES	NO FEEDBACK	NO FEEDBACK	Moderate Risk
68C068	MOFFETT	YES	YES	NO FEEDBACK	NO FEEDBACK	Moderate Risk
69C082	GRANDVIEW	NO	YES	NO FEEDBACK	NO FEEDBACK	Moderate Risk
69I003	MARLOW	YES	YES	NO FEEDBACK	NO FEEDBACK	Moderate Risk
69I042	BRAY-DOYLE	YES	YES	NO FEEDBACK	NO FEEDBACK	Moderate Risk
70C080	STRAIGHT	NO	YES	5	N/A	Moderate Risk
72G001	DEBORAH BROWN	YES	NO	NO DATA	NO DATA	Moderate Risk
72I014	LIBERTY PSD	YES	YES	NO FEEDBACK	NO FEEDBACK	Moderate Risk
56I001	OKMULGEE	YES	YES	3	RESOLVED	Low Risk
72I001	TULSA	YES	YES	3	RESOLVED	Low Risk
10I055	HEALDTON	YES	YES	3	RESOLVED	Low Risk
10I077	DICKSON	YES	YES	3	RESOLVED	Low Risk
22I005	VICI	YES	YES	3	RESOLVED	Low Risk
26I097	TUTTLE	YES	YES	3	RESOLVED	Low Risk
38I001	HOBART	YES	YES	3	RESOLVED	Low Risk
42I003	MULHALL-ORLANDO	YES	YES	3	RESOLVED	Low Risk
54I002	MASON	YES	YES	3	RESOLVED	Low Risk
58I023	MIAMI	YES	YES	3	RESOLVED	Low Risk
59I001	PAWNEE	YES	YES	3	RESOLVED	Low Risk
60I067	CUSHING	YES	YES	3	RESOLVED	Low Risk
61I080	MCALESTER	YES	YES	3	RESOLVED	Low Risk
63I092	TECUMSEH	YES	YES	3	RESOLVED	Low Risk
63I093	SHAWNEE	YES	YES	3	RESOLVED	Low Risk
63I115	WANETTE	YES	YES	3	RESOLVED	Low Risk
67I006	NEW LIMA	YES	YES	3	RESOLVED	Low Risk
71I008	TIPTON	YES	YES	3	RESOLVED	Low Risk
72I002	SAND SPRINGS	YES	YES	3	RESOLVED	Low Risk
77I001	WOODWARD	YES	YES	2	RESOLVED	Low Risk
77I002	MOORELAND	YES	YES	3	RESOLVED	Low Risk
04I075	BALKO	YES	YES	3	RESOLVED	Low Risk
19C035	ALLEN-BOWDEN	YES	YES	3	RESOLVED	Low Risk
20I005	ARAPAHO-BUTLER	YES	YES	3	RESOLVED	Low Risk
68C036	BRUSHY	YES	YES	3	RESOLVED	Low Risk
68I006	GORE	YES	YES	2	RESOLVED	Low Risk
72I003	BROKEN ARROW	YES	YES	3	RESOLVED	Low Risk
72I006	COLLINSVILLE	YES	YES	3	RESOLVED	Low Risk
74I030	Bartlesville ISD 30	YES	YES	3	RESOLVED	Low Risk
40I091	ARKOMA	YES	YES	2	RESOLVED	Low Risk
55I052	MIDWEST CITY-DEL CITY	YES	YES	1	RESOLVED	Low Risk



DISTRICT_ID	DISTRICT_NAME	Provided RTS Data	Participated in Readiness Test	Readiness Test Priority Level	Issue Resolution Status	Risk Level
01I025	STILWELL	YES	YES	2	RESOLVED	Low Risk
07I072	DURANT	YES	YES	2	RESOLVED	Low Risk
11T001	TSUNADELOQUASDI CHEROKEE	YES	YES	1	RESOLVED	Low Risk
32I048	CALVIN	YES	YES	2	RESOLVED	Low Risk
37I089	CASHION	YES	YES	1	RESOLVED	Low Risk
44I084	FAIRVIEW	YES	YES	2	RESOLVED	Low Risk
45I003	KINGSTON	YES	YES	2	RESOLVED	Low Risk
07I040	BENNINGTON	YES	YES	5	RESOLVED	Low Risk
19I003	MANNFORD	YES	YES	2	RESOLVED	Low Risk
29I066	HOLLIS	YES	YES	3	RESOLVED	Low Risk
38I004	SNYDER	YES	YES	3	RESOLVED	Low Risk
48I074	BROKEN BOW	YES	YES	3	RESOLVED	Low Risk
66I001	CLAREMORE	YES	YES	2	RESOLVED	Low Risk
69I002	COMANCHE	YES	YES	2	RESOLVED	Low Risk
61I017	QUINTON	YES	YES	1	RESOLVED	Low Risk
62I001	ALLEN	YES	YES	1	RESOLVED	Low Risk
72I005	JENKS	YES	YES	1	RESOLVED	Low Risk
01C022	MARYETTA	YES	YES	4	N/A	Low Risk
01C028	ZION	YES	YES	4	N/A	Low Risk
01C032	GREASY	YES	YES	5	N/A	Low Risk
01I004	WATTS	YES	YES	4	N/A	Low Risk
01I011	WESTVILLE	YES	YES	5	N/A	Low Risk
01I030	CAVE SPRINGS	YES	YES	4	N/A	Low Risk
02I001	BURLINGTON	YES	YES	5	N/A	Low Risk
02I046	CHEROKEE	YES	YES	5	N/A	Low Risk
02I093	TIMBERLAKE	YES	YES	5	N/A	Low Risk
03C021	HARMONY	YES	YES	5	N/A	Low Risk
03C022	LANE	YES	YES	5	N/A	Low Risk
03I015	ATOKA	YES	YES	4	N/A	Low Risk
04I123	FORGAN	YES	YES	5	N/A	Low Risk
05I002	MERRITT	YES	YES	5	N/A	Low Risk
05I006	ELK CITY	YES	YES	4	N/A	Low Risk
05I051	ERICK	YES	YES	5	N/A	Low Risk
06I009	OKEENE	YES	YES	4	N/A	Low Risk
06I042	WATONGA	YES	YES	2	RESOLVED	Low Risk
06I080	GEARY	YES	YES	5	N/A	Low Risk
06I105	CANTON	YES	YES	5	N/A	Low Risk
07I001	SILO	YES	YES	4	N/A	Low Risk
07I002	ROCK CREEK	YES	YES	2	RESOLVED	Low Risk
07I004	COLBERT	YES	YES	4	N/A	Low Risk
07I005	CADDO	YES	YES	4	N/A	Low Risk
07I048	CALERA	YES	YES	2	RESOLVED	Low Risk
08I011	HYDRO-EAKLY	YES	YES	5	N/A	Low Risk
08I012	LOOKEBA SICKLES	YES	YES	5	N/A	Low Risk
08I020	ANADARKO	YES	YES	5	N/A	Low Risk
08I033	CARNEGIE	YES	YES	4	N/A	Low Risk
08I056	BOONE-APACHE	YES	YES	5	N/A	Low Risk
08I086	GRACEMONT	YES	YES	4	N/A	Low Risk
08I160	CEMENT	YES	YES	4	N/A	Low Risk
08I161	HINTON	YES	YES	5	N/A	Low Risk
08I167	FORT COBB-BROXTON	YES	YES	5	N/A	Low Risk
08I168	BINGER-ONEY	YES	YES	5	N/A	Low Risk

DISTRICT_ID	DISTRICT_NAME	Provided RTS Data	Participated in Readiness Test	Readiness Test Priority Level	Issue Resolution Status	Risk Level
09C029	RIVERSIDE	YES	YES	1	RESOLVED	Low Risk
09C031	BANNER	YES	YES	5	N/A	Low Risk
09C070	DARLINGTON	YES	YES	5	N/A	Low Risk
09I022	PIEDMONT	YES	YES	4	N/A	Low Risk
09I027	YUKON	YES	YES	4	N/A	Low Risk
09I069	Mustang Sch Dist	YES	YES	4	N/A	Low Risk
09I076	CALUMET	YES	YES	5	N/A	Low Risk
10C072	ZANEIS	YES	YES	5	N/A	Low Risk
10I019	ARDMORE	YES	YES	5	N/A	Low Risk
10I021	SPRINGER	YES	YES	4	N/A	Low Risk
10I027	PLAINVIEW	YES	YES	5	N/A	Low Risk
10I032	LONE GROVE	YES	YES	4	N/A	Low Risk
10I043	WILSON PS	YES	YES	4	N/A	Low Risk
10I074	FOX	YES	YES	4	N/A	Low Risk
11C010	LOWREY	YES	YES	5	N/A	Low Risk
11C014	NORWOOD	YES	YES	5	N/A	Low Risk
11C021	WOODALL	YES	YES	4	N/A	Low Risk
11C031	PEGGS	YES	YES	5	N/A	Low Risk
11C034	GRAND VIEW	YES	YES	5	N/A	Low Risk
11C044	BRIGGS	YES	YES	4	N/A	Low Risk
11C066	TENKILLER	YES	YES	4	N/A	Low Risk
11I006	KEYS	YES	YES	1	RESOLVED	Low Risk
11I016	HULBERT	YES	YES	5	N/A	Low Risk
11I035	TAHLEQUAH	YES	YES	4	N/A	Low Risk
12C003	GRANT	YES	YES	5	N/A	Low Risk
12C021	SWINK	YES	YES	4	N/A	Low Risk
12I001	BOSWELL	YES	YES	5	N/A	Low Risk
12I002	FORT TOWSON	YES	YES	5	N/A	Low Risk
12I004	SOPER	YES	YES	5	N/A	Low Risk
12I039	HUGO	YES	YES	5	N/A	Low Risk
13I010	FELT	YES	YES	5	N/A	Low Risk
14C016	ROBIN HILL	YES	YES	5	N/A	Low Risk
14I002	MOORE	YES	YES	1	RESOLVED	Low Risk
14I029	NORMAN	YES	YES	1	RESOLVED	Low Risk
14I040	NOBLE	YES	YES	5	N/A	Low Risk
14I057	LEXINGTON	YES	YES	1	RESOLVED	Low Risk
14I070	LITTLE AXE	YES	YES	4	N/A	Low Risk
15I001	COALGATE	YES	YES	5	N/A	Low Risk
15I002	TUPELO	YES	YES	4	N/A	Low Risk
16C049	BISHOP	YES	YES	5	N/A	Low Risk
16I001	CACHE	YES	YES	4	N/A	Low Risk
16I003	STERLING	YES	YES	4	N/A	Low Risk
16I004	GERONIMO	YES	YES	1	RESOLVED	Low Risk
16I009	FLETCHER	YES	YES	3	RESOLVED	Low Risk
16I016	ELGIN	YES	YES	5	N/A	Low Risk
16I132	CHATTANOOGA	YES	YES	1	RESOLVED	Low Risk
17I001	WALTERS	YES	YES	4	N/A	Low Risk
17I101	TEMPLE	YES	YES	5	N/A	Low Risk
17I333	BIG PASTURE	YES	YES	5	N/A	Low Risk
18C001	WHITE OAK	YES	YES	5	N/A	Low Risk
19C008	LONE STAR	YES	YES	4	N/A	Low Risk
19C034	PRETTY WATER	YES	YES	4	N/A	Low Risk

DISTRICT_ID	DISTRICT_NAME	Provided RTS Data	Participated in Readiness Test	Readiness Test Priority Level	Issue Resolution Status	Risk Level
19I002	BRISTOW	YES	YES	3	RESOLVED	Low Risk
19I017	OLIVE	YES	YES	5	N/A	Low Risk
19I018	KIEFER	YES	YES	6	N/A	Low Risk
19I021	DEPEW	YES	YES	5	N/A	Low Risk
19I031	KELLYVILLE	YES	YES	4	N/A	Low Risk
19I033	SAPULPA	YES	YES	4	N/A	Low Risk
19I039	DRUMRIGHT	YES	YES	1	RESOLVED	Low Risk
20I026	WEATHERFORD	YES	YES	5	N/A	Low Risk
21C006	CLEORA	YES	YES	4	N/A	Low Risk
21C030	KENWOOD	YES	YES	5	N/A	Low Risk
21C034	MOSELEY	YES	YES	5	N/A	Low Risk
21I001	JAY	YES	YES	5	N/A	Low Risk
21I002	GROVE PSD	YES	YES	4	N/A	Low Risk
21I003	KANSAS	YES	YES	5	N/A	Low Risk
21I004	COLCORD	YES	YES	5	N/A	Low Risk
22I008	SEILING	YES	YES	5	N/A	Low Risk
23I003	ARNETT	YES	YES	4	N/A	Low Risk
23I039	GAGE	YES	YES	4	N/A	Low Risk
23I042	SHATTUCK	YES	YES	5	N/A	Low Risk
24I018	KREMLIN-HILLSDALE	YES	YES	5	N/A	Low Risk
24I042	CHISHOLM	YES	YES	5	N/A	Low Risk
24I047	GARBER	YES	YES	5	N/A	Low Risk
24I056	PIONEER-PLEASANT VALE	YES	YES	5	N/A	Low Risk
25C016	WHITEBEAD	YES	YES	1	RESOLVED	Low Risk
25I002	STRATFORD	YES	YES	4	N/A	Low Risk
25I005	PAOLI	YES	YES	5	N/A	Low Risk
25I009	LINDSAY	YES	YES	4	N/A	Low Risk
25I018	PAULS VALLEY	YES	YES	4	N/A	Low Risk
25I038	WYNNEWOOD	YES	YES	4	N/A	Low Risk
25I072	ELMORE CITY-PERNELL	YES	YES	5	N/A	Low Risk
26C037	FRIEND	YES	YES	5	N/A	Low Risk
26C131	PIONEER	YES	YES	5	N/A	Low Risk
26I002	MINCO	YES	YES	5	N/A	Low Risk
26I056	ALEX	YES	YES	1	RESOLVED	Low Risk
26I068	RUSH SPRINGS	YES	YES	5	N/A	Low Risk
26I099	VERDEN	YES	YES	4	N/A	Low Risk
27I054	MEDFORD	YES	YES	4	N/A	Low Risk
27I090	POND CREEK-HUNTER	YES	YES	4	N/A	Low Risk
27I095	DEER CREEK-LAMONT	YES	YES	5	N/A	Low Risk
28I001	MANGUM	YES	YES	5	N/A	Low Risk
28I003	GRANITE	YES	YES	5	N/A	Low Risk
30I001	LAVERNE	YES	YES	5	N/A	Low Risk
31C010	WHITEFIELD	YES	YES	5	N/A	Low Risk
31I020	STIGLER	YES	YES	5	N/A	Low Risk
31I037	MCCURTAIN	YES	YES	4	N/A	Low Risk
31I043	KEOTA	YES	YES	5	N/A	Low Risk
32I001	MOSS	YES	YES	5	N/A	Low Risk
32I005	WETUMKA	YES	YES	5	N/A	Low Risk
32I035	HOLDENVILLE	YES	YES	5	N/A	Low Risk
32I054	STUART	YES	YES	5	N/A	Low Risk
33I018	ALTUS	YES	YES	4	N/A	Low Risk
33I025	ELDORADO	YES	YES	5	N/A	Low Risk

DISTRICT_ID	DISTRICT_NAME	Provided RTS Data	Participated in Readiness Test	Readiness Test Priority Level	Issue Resolution Status	Risk Level
33I035	OLUSTEE	YES	YES	5	N/A	Low Risk
33I054	BLAIR	YES	YES	4	N/A	Low Risk
34I001	RYAN	YES	YES	5	N/A	Low Risk
34I023	WAURIKA	YES	YES	5	N/A	Low Risk
35C010	RAVIA	YES	YES	5	N/A	Low Risk
35I002	MILL CREEK	YES	YES	4	N/A	Low Risk
35I020	TISHOMINGO	YES	YES	5	N/A	Low Risk
35I029	MILBURN	YES	YES	5	N/A	Low Risk
35I035	COLEMAN	YES	YES	5	N/A	Low Risk
35I037	WAPANUCKA	YES	YES	4	N/A	Low Risk
36I045	BLACKWELL	YES	YES	5	N/A	Low Risk
36I071	PONCA CITY	YES	YES	5	N/A	Low Risk
36I087	TONKAWA	YES	YES	5	N/A	Low Risk
36I125	NEWKIRK	YES	YES	5	N/A	Low Risk
37I003	LOMEGA	YES	YES	5	N/A	Low Risk
37I007	KINGFISHER	YES	YES	5	N/A	Low Risk
37I016	HENNESSEY	YES	YES	4	N/A	Low Risk
37I105	OKARCHE	YES	YES	5	N/A	Low Risk
38I002	LONE WOLF	YES	YES	5	N/A	Low Risk
39I004	PANOLA	YES	YES	5	N/A	Low Risk
40C039	FANSHAWE	YES	YES	5	N/A	Low Risk
40I003	HEAVENER	YES	YES	5	N/A	Low Risk
40I007	POCOLA	YES	YES	4	N/A	Low Risk
40I016	LE FLORE	YES	YES	4	N/A	Low Risk
40I026	BOKOSHE	YES	YES	5	N/A	Low Risk
40I029	POTEAU	YES	YES	2	RESOLVED	Low Risk
40I049	WISTER	YES	YES	5	N/A	Low Risk
40I067	HOWE	YES	YES	4	N/A	Low Risk
41C005	WHITE ROCK	YES	YES	5	N/A	Low Risk
41I003	DAVENPORT	YES	YES	4	N/A	Low Risk
41I004	WELLSTON	YES	YES	5	N/A	Low Risk
41I054	STROUD	YES	YES	4	N/A	Low Risk
41I095	MEEKER	YES	YES	4	N/A	Low Risk
41I103	PRAGUE	YES	YES	5	N/A	Low Risk
41I105	CARNEY	YES	YES	4	N/A	Low Risk
41I134	AGRA	YES	YES	5	N/A	Low Risk
42I001	GUTHRIE	YES	YES	4	N/A	Low Risk
42I002	CRESCENT	YES	YES	5	N/A	Low Risk
42I014	COYLE	YES	YES	5	N/A	Low Risk
43C003	GREENVILLE	YES	YES	5	N/A	Low Risk
43I004	THACKERVILLE	YES	YES	5	N/A	Low Risk
43I005	TURNER	YES	YES	4	N/A	Low Risk
43I016	MARIETTA	YES	YES	4	N/A	Low Risk
44I001	RINGWOOD	YES	YES	6	N/A	Low Risk
44I004	ALINE-CLEO	YES	YES	5	N/A	Low Risk
44I092	CIMARRON	YES	YES	5	N/A	Low Risk
46C035	WICKLIFFE	YES	YES	5	N/A	Low Risk
46C043	OSAGE	YES	YES	5	N/A	Low Risk
46I001	PRYOR	YES	YES	4	N/A	Low Risk
46I016	SALINA	YES	YES	4	N/A	Low Risk
46I032	CHOUTEAU-MAZIE	YES	YES	4	N/A	Low Risk
47C004	BYARS	YES	YES	6	N/A	Low Risk

DISTRICT_ID	DISTRICT_NAME	Provided RTS Data	Participated in Readiness Test	Readiness Test Priority Level	Issue Resolution Status	Risk Level
47I001	NEWCASTLE	YES	YES	4	N/A	Low Risk
47I002	DIBBLE	YES	YES	4	N/A	Low Risk
47I005	WASHINGTON	YES	YES	2	RESOLVED	Low Risk
47I010	WAYNE	YES	YES	5	N/A	Low Risk
47I015	PURCELL	YES	YES	5	N/A	Low Risk
47I029	BLANCHARD	YES	YES	3	RESOLVED	Low Risk
48C009	LUKFATA	YES	YES	4	N/A	Low Risk
48C037	DENISON	YES	YES	5	N/A	Low Risk
48C072	HOLLY CREEK	YES	YES	5	N/A	Low Risk
48I005	IDABEL	YES	YES	5	N/A	Low Risk
48I006	HAWORTH	YES	YES	2	RESOLVED	Low Risk
48I011	VALLIANT	YES	YES	4	N/A	Low Risk
48I013	EAGLETOWN	YES	YES	4	N/A	Low Risk
48I014	SMITHVILLE	YES	YES	4	N/A	Low Risk
48I039	WRIGHT CITY	YES	YES	4	N/A	Low Risk
48I071	BATTIEST	YES	YES	5	N/A	Low Risk
49C003	RYAL	YES	YES	5	N/A	Low Risk
49I001	EUFAULA	YES	YES	2	RESOLVED	Low Risk
49I019	CHECOTAH	YES	YES	1	RESOLVED	Low Risk
50I001	SULPHUR	YES	YES	4	N/A	Low Risk
51C009	WAINWRIGHT	YES	YES	5	N/A	Low Risk
51I003	FORT GIBSON	YES	YES	5	N/A	Low Risk
51I006	WEBBERS FALLS	YES	YES	4	N/A	Low Risk
51I008	OKTAHA	YES	YES	5	N/A	Low Risk
51I020	MUSKOGEE	YES	YES	5	N/A	Low Risk
51I029	HILLDALE	YES	YES	5	N/A	Low Risk
51I046	BRAGGS	YES	YES	4	N/A	Low Risk
51I074	WARNER	YES	YES	1	RESOLVED	Low Risk
52I001	PERRY	YES	YES	5	N/A	Low Risk
52I002	BILLINGS	YES	YES	5	N/A	Low Risk
52I004	FRONTIER	YES	YES	4	N/A	Low Risk
52I006	MORRISON	YES	YES	4	N/A	Low Risk
53I040	NOWATA	YES	YES	1	RESOLVED	Low Risk
54C029	BEARDEN	YES	YES	4	N/A	Low Risk
54E003	EPIC ONE ON ONE CHARTER	YES	YES	4	N/A	Low Risk
54I014	PADEN	YES	YES	5	N/A	Low Risk
54I026	OKEMAH	YES	YES	5	N/A	Low Risk
54I031	WELEETKA	YES	YES	4	N/A	Low Risk
55C029	OAKDALE	YES	YES	5	N/A	Low Risk
55C074	CRUTCHO	YES	YES	4	N/A	Low Risk
55E004	ASTEC CHARTER	YES	YES	4	N/A	Low Risk
55E005	DOVE SCIENCE OKC	YES	YES	5	N/A	Low Risk
55E007	SANTA FE SOUTH CHARTER HS	YES	YES	5	N/A	Low Risk
55E008	HARDING CHART	YES	YES	4	N/A	Low Risk
55E010	HARDING FINE ARTS	YES	YES	1	RESOLVED	Low Risk
55E011	SANTA FE SOUTH CHARTER MS	YES	YES	4	N/A	Low Risk
55I001	PUTNAM CITY	YES	YES	5	N/A	Low Risk
55I004	CHOCTAW-NICOMA PARK	YES	YES	5	N/A	Low Risk
55I007	HARRAH	YES	YES	2	RESOLVED	Low Risk
55I009	JONES	YES	YES	1	RESOLVED	Low Risk
55I012	EDMOND PUBLIC SCHOOLS	YES	YES	4	N/A	Low Risk
55I037	MILLWOOD	YES	YES	3	RESOLVED	Low Risk

DISTRICT_ID	DISTRICT_NAME	Provided RTS Data	Participated in Readiness Test	Readiness Test Priority Level	Issue Resolution Status	Risk Level
55I053	CROOKED OAK	YES	YES	4	N/A	Low Risk
56I002	HENRYETTA	YES	YES	4	N/A	Low Risk
56I003	MORRIS	YES	YES	5	N/A	Low Risk
56I004	BEGGS	YES	YES	5	N/A	Low Risk
56I005	PRESTON	YES	YES	3	RESOLVED	Low Risk
56I007	WILSON PSD	YES	YES	2	RESOLVED	Low Risk
56I008	DEWAR	YES	YES	4	N/A	Low Risk
57C035	AVANT	YES	YES	5	N/A	Low Risk
57C052	ANDERSON	YES	YES	5	N/A	Low Risk
57I002	PAWHUSKA	YES	YES	4	N/A	Low Risk
57I011	SHIDLER	YES	YES	5	N/A	Low Risk
57I029	BARNSDALL	YES	YES	5	N/A	Low Risk
57I038	HOMINY	YES	YES	5	N/A	Low Risk
57I050	PRUE	YES	YES	1	RESOLVED	Low Risk
57I090	WOODLAND	YES	YES	4	N/A	Low Risk
58C010	TURKEY FORD	YES	YES	5	N/A	Low Risk
58I001	WYANDOTTE	YES	YES	4	N/A	Low Risk
58I014	QUAPAW	YES	YES	5	N/A	Low Risk
58I018	COMMERCE	YES	YES	4	N/A	Low Risk
58I026	AFTON	YES	YES	5	N/A	Low Risk
59I006	CLEVELAND	YES	YES	4	N/A	Low Risk
60C104	OAK GROVE	YES	YES	5	N/A	Low Risk
60I003	RIPLEY	YES	YES	5	N/A	Low Risk
60I016	STILLWATER	YES	YES	5	N/A	Low Risk
60I056	PERKINS-TRYON	YES	YES	5	N/A	Low Risk
60I103	YALE	YES	YES	4	N/A	Low Risk
61B001	JONES ACADEMY	YES	YES	5	N/A	Low Risk
61C029	FRINK-CHAMBERS	YES	YES	5	N/A	Low Risk
61C088	HAYWOOD	YES	YES	5	N/A	Low Risk
61I001	HARTSHORNE	YES	YES	4	N/A	Low Risk
61I002	CANADIAN	YES	YES	4	N/A	Low Risk
61I011	HAILEYVILLE	YES	YES	5	N/A	Low Risk
61I014	KIOWA	YES	YES	5	N/A	Low Risk
61I025	INDIANOLA	YES	YES	5	N/A	Low Risk
61I028	CROWDER	YES	YES	5	N/A	Low Risk
61I063	PITTSBURG	YES	YES	5	N/A	Low Risk
62I009	VANOSS	YES	YES	5	N/A	Low Risk
62I016	BYNG	YES	YES	4	N/A	Low Risk
62I019	ADA	YES	YES	4	N/A	Low Risk
62I024	LATTA	YES	YES	4	N/A	Low Risk
62I030	STONEWALL	YES	YES	4	N/A	Low Risk
62I037	ROFF	YES	YES	5	N/A	Low Risk
63C010	NORTH ROCK CREEK	YES	YES	4	N/A	Low Risk
63C027	GROVE	YES	YES	4	N/A	Low Risk
63C032	SOUTH ROCK CREEK	YES	YES	5	N/A	Low Risk
63I002	DALE	YES	YES	5	N/A	Low Risk
63I003	BETHEL	YES	YES	5	N/A	Low Risk
63I004	MACOMB	YES	YES	5	N/A	Low Risk
63I112	ASHER PUBLIC SCHOOLS	YES	YES	5	N/A	Low Risk
63I117	MAUD	YES	YES	5	N/A	Low Risk
64C002	ALBION	YES	YES	6	N/A	Low Risk
64I001	RATTAN	YES	YES	5	N/A	Low Risk

DISTRICT_ID	DISTRICT_NAME	Provided RTS Data	Participated in Readiness Test	Readiness Test Priority Level	Issue Resolution Status	Risk Level
64I010	CLAYTON	YES	YES	5	N/A	Low Risk
64I013	ANTLERS	YES	YES	4	N/A	Low Risk
65I003	LEEDEY	YES	YES	5	N/A	Low Risk
65I006	REYDON	YES	YES	5	N/A	Low Risk
65I007	CHEYENNE	YES	YES	4	N/A	Low Risk
65I015	SWEETWATER	YES	YES	4	N/A	Low Risk
65I066	HAMMON	YES	YES	5	N/A	Low Risk
66I004	OOLOGAH-TALALA	YES	YES	1	RESOLVED	Low Risk
66I005	INOLA	YES	YES	4	N/A	Low Risk
66I006	SEQUOYAH	YES	YES	5	N/A	Low Risk
66I007	FOYIL	YES	YES	4	N/A	Low Risk
67C054	JUSTICE	YES	YES	1	RESOLVED	Low Risk
67I001	SEMINOLE	YES	YES	5	N/A	Low Risk
67I003	BOWLEGS	YES	YES	4	N/A	Low Risk
67I004	KONAWA	YES	YES	5	N/A	Low Risk
67I010	SASAKWA	YES	YES	5	N/A	Low Risk
67I014	STROTHER	YES	YES	4	N/A	Low Risk
67I015	BUTNER	YES	YES	5	N/A	Low Risk
68C035	MARBLE CITY	YES	YES	5	N/A	Low Risk
68C050	BELFONTE	YES	YES	5	N/A	Low Risk
68I001	SALLISAW	YES	YES	4	N/A	Low Risk
68I002	VIAN	YES	YES	5	N/A	Low Risk
68I003	MULDROW	YES	YES	4	N/A	Low Risk
68I004	GANS	YES	YES	5	N/A	Low Risk
68I005	ROLAND	YES	YES	5	N/A	Low Risk
68I007	CENTRAL	YES	YES	5	N/A	Low Risk
69I001	DUNCAN	YES	YES	5	N/A	Low Risk
69I015	VELMA-ALMA	YES	YES	5	N/A	Low Risk
69I021	EMPIRE	YES	YES	5	N/A	Low Risk
70I001	YARBROUGH	YES	YES	5	N/A	Low Risk
70I008	GUYMON	YES	YES	4	N/A	Low Risk
70I015	HARDESTY	YES	YES	5	N/A	Low Risk
70I023	HOOKER	YES	YES	5	N/A	Low Risk
70I060	GOODWELL	YES	YES	5	N/A	Low Risk
70I061	TEXHOMA	YES	YES	5	N/A	Low Risk
71I009	DAVIDSON	YES	YES	5	N/A	Low Risk
71I158	FREDERICK	YES	YES	4	N/A	Low Risk
71I249	GRANDFIELD	YES	YES	5	N/A	Low Risk
72C015	KEYSTONE	YES	YES	4	N/A	Low Risk
72E004	TULSA SCHOOL ARTS SCIENCES	YES	YES	5	N/A	Low Risk
72E005	KIPP TULSA COLLEGE PREPARA	YES	YES	5	N/A	Low Risk
72G003	DISCOVERY SCHOOLS OF TULSA	YES	YES	4	N/A	Low Risk
72I004	BIXBY	YES	YES	1	RESOLVED	Low Risk
72I007	SKIATOOK	YES	YES	5	N/A	Low Risk
72I008	SPERRY	YES	YES	4	N/A	Low Risk
72I009	Union Pub SD 1-9	YES	YES	4	N/A	Low Risk
72I011	OWASSO	YES	YES	4	N/A	Low Risk
73I001	OKAY	YES	YES	5	N/A	Low Risk
73I017	COWETA	YES	YES	4	N/A	Low Risk
73I019	WAGONER	YES	YES	4	N/A	Low Risk
73I365	PORTER CONSOLIDATED	YES	YES	4	N/A	Low Risk
74I004	COPAN	YES	YES	5	N/A	Low Risk

DISTRICT_ID	DISTRICT_NAME	Provided RTS Data	Participated in Readiness Test	Readiness Test Priority Level	Issue Resolution Status	Risk Level
74I007	DEWEY	YES	YES	4	N/A	Low Risk
74I018	CANEY VALLEY	YES	YES	4	N/A	Low Risk
75I001	SENTINEL	YES	YES	5	N/A	Low Risk
75I010	BURNS FLAT-DILL CITY	YES	YES	4	N/A	Low Risk
75I011	CANUTE	YES	YES	5	N/A	Low Risk
75I078	CORDELL	YES	YES	5	N/A	Low Risk
76I001	ALVA	YES	YES	5	N/A	Low Risk
76I003	WAYNOKA	YES	YES	4	N/A	Low Risk
76I006	FREEDOM	YES	YES	5	N/A	Low Risk
77I003	SHARON-MUTUAL	YES	YES	2	RESOLVED	Low Risk
77I005	FORT SUPPLY	YES	YES	5	N/A	Low Risk
04I022	BEAVER	NO	NO	NO DATA	NO DATA	Unknown Risk
11B001	SEQUOYAH INDIAN SCHOOL	NO	NO	NO DATA	NO DATA	Unknown Risk
18I017	WELCH	NO	NO	NO DATA	NO DATA	Unknown Risk
18I065	VINITA	NO	NO	NO DATA	NO DATA	Unknown Risk
19C001	MILFAY	NO	NO	NO DATA	NO DATA	Unknown Risk
21I005	OAKS-MISSION	NO	NO	NO DATA	NO DATA	Unknown Risk
34I014	RINGLING	NO	NO	NO DATA	NO DATA	Unknown Risk
36C050	KILDARE	NO	NO	NO DATA	NO DATA	Unknown Risk
40C011	MONROE	NO	NO	NO DATA	NO DATA	Unknown Risk
53I051	SOUTH COFFEYVILLE	NO	NO	NO DATA	NO DATA	Unknown Risk
55E002	JUSTICE A.W. SEEWORTH	NO	NO	NO DATA	NO DATA	Unknown Risk
55E016	HARPER CHARTER ACADEMY	NO	NO	NO DATA	NO DATA	Unknown Risk
70C009	OPTIMA	NO	NO	NO DATA	NO DATA	Unknown Risk
72E006	LIGHTHOUSE ACADEMIES TULSA	NO	NO	NO DATA	NO DATA	Unknown Risk