

engageok

ON THE ROAD



OSDE Special Education Updates: 2016-17 Updates

Todd Loftin, Interim Executive Director of Special
Education Services

Agenda

- Communication
- Close Out
- Monitoring
- SSIP
- Budget Workshops
- OAAP
- Boot Camp
- Professional Development
- IDEA B State Advisory Panel
- Conflict Resolution

General Updates

- Reworking organizational flow
- Increased professional development/support
- Increased collaboration
- Increased availability and presence
- Revising Parent Survey
 - Decreasing amount of questions

Communication

- Special Education Director Listserv
 - Tuesdays – Information from OSDE-SES
 - Thursdays – Information from other agencies/groups
- EngageOK Administrators
- Special Education Contacts by Topic
- Technical Assistance Button

Closeout

- Districts must perform the closeout procedure at the end of each fiscal year.
 - OSDE requires closeout of all federal programs by August 26, 2016.
 - Closeout informs the OSDE that the district has concluded expenditure reporting for the year and moves all unspent funds for that Project to the next year for budgeting.



(You must check the box at the bottom left of report)

- The closeout process closely resembles the creation of an expenditure report.

Monitoring

- 3 Types of Monitoring

An orange hexagon with a dark orange border and a slight 3D effect, casting a shadow.

Tiered
Compliance
Review

A blue hexagon with a dark blue border and a slight 3D effect, casting a shadow.

Selective
Review

A green hexagon with a dark green border and a slight 3D effect, casting a shadow.

Engage &
Develop
Review

Monitoring – Tiered Compliance

- **The OSDE-SES monitors every LEA in the state each year using the data available for each of the compliance indicators identified in the State Performance Plan (SPP).**
- For each LEA, data submitted through the Oklahoma Special Education Child Count System (i.e., Child Count and End of Year Report) are compared to the targets for each compliance indicator identified in the State Performance Plan.

Monitoring – Tiered Compliance

- District Determinations (available early Fall) now include both compliance and performance elements.
- Districts will participate in various activities based on our Tiered Compliance Review.
 - Meets Requirements
 - Needs Assistance
 - Needs Intervention
 - Needs Substantial Intervention

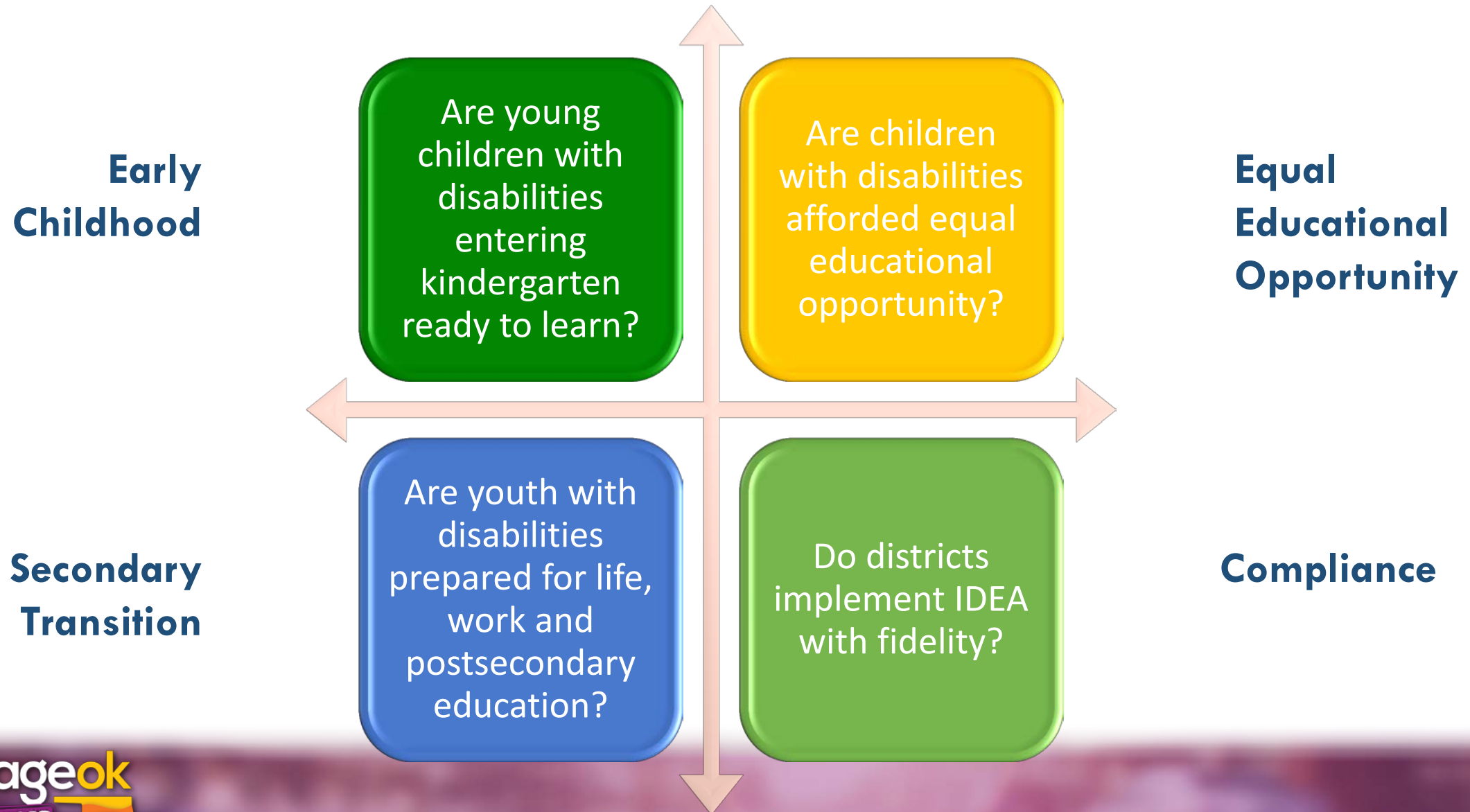
Monitoring - Tiered Compliance

- Activities required based on ***District Determinations*** could include:
 - Front-loaded Technical Assistance
 - Professional Development
 - Improvement Plan
 - Self-Assessment
 - Targeted Technical Assistance
 - On-site Compliance Review
 - Corrective Action Plan

Monitoring – Engage and Develop

- The OSDE-SES will also be selecting districts for monitoring activities based on their performance in 3 areas:
 - Early Childhood
 - Equal Educational Opportunity
 - Secondary Transition
- This process directly relates to the State Systemic Improvement Plan (SSIP) and our goal of implementing this initiative into our monitoring process.
- Critical Questions Framework

Critical Questions Framework



Monitoring - Selective

- This process is used to identify districts who need assistance and/or intervention.
 - Phone calls or emails of concern
 - Referrals from other sections in the agency.
 - Referrals from outside agency/advocacy groups.
 - Complaint data
 - Other sources
- Selective Reviews occur throughout the year.

State-identified Measureable Results*

- Improved early literacy achievement.
- Measurements:
 - C: Percentage increase in young children meeting age-level early childhood outcomes related to skills, knowledge and communication.
 - B: Percentage increase in students passing the 3rd grade annual reading assessment.

*SIMR

Improvement Topics

- Parts C & B
 - Data systems
 - Accommodations and assistive technology
 - Family knowledge development/access to resources
 - Professional skill development
- Part B
 - District monitoring

Part B Leadership Team

- Strategic Coordinators
 - Erik Friend, SES (Strategy 1)
 - Mark Everhart, SES (Strategy 2)
 - Angela Kwok, SES (Strategies 3, 4)
 - Christy Stevenson, SES (Strategies 3, 4)
 - Michelle Pitchford, SES (Strategy 5)
 - Jacquelyn Cullen, SES (Strategy 6)
- SSIP-B Coordinator: Ginger Elliott-Teague
 - ginger.elliott-teague@sde.ok.gov
 - 405-521-4871
 - Hodge, Suite 412

Next Steps: Phase III Implementation

- The strategic leadership teams will...
 - Develop work plans to meet outcomes.
 - Implement action plans.
 - Begin evaluation processes.
- First formal update is due April 1, 2017.

“Hands On” Budget Application Workshops

- This training is a detailed hands on training process for the Special Education Services (SES) Budget Application. Updates and information pertaining to Special Education will also be addressed. By the end of the workshop, each district attending will have an application that is approved or ready for approval.
- Examples of additional information you will learn about:
 - Fiscal responsibilities
 - Budgeting funds to support the LEA’s special education program
 - Coding and submitting expenditures
 - Maintenance of Effort
 - Time and Effort reporting
 - Important dates

“Hands On” Budget Application Workshops

- Stillwater: August 23, 2016
- Jenks: August 24, 2016
- Elk City: August 30, 2016
- Ardmore: August 31, 2016
- Idabel: September 1, 2016
- Enid: September 7, 2016
- Goodwell: September 9, 2016
- Altus: September 13, 2016
- McAlester: September 14, 2016
- Midwest City: September 15, 2016
- Bartlesville: September 21, 2016

OAAP 2016-17

- Math, Science & ELA: Dynamic Learning Maps (DLM)
 - Working towards more streamlined approach for entering data
 - In-person training (data stewards and teachers)
- US History (HS only): Portfolio
- OAAP Advisory Council
- OAAP Mentors

Boot Camp

- The next Non-Traditional Route to Special Education Certification program “Boot Camp” is scheduled for **September 17 – November 19, 2016.**
- Specific location of eligibility requirements can be found @ <http://sde.ok.gov/sde/special-education>
- (special education homepage) > School Age Part B pane>Technical Assistance>Special Education Staffing>Boot Camp
- (<http://sde.ok.gov/sde/non-traditional-route-special-education-teacher-certification>)

Boot Camp

- This process is designed for candidates who meet the following criteria:
 - Four year degree
 - Grade Point Average of 2.75
 - Recommendation from a representative at a school district or Institution of Higher Education
 - Pass a National Background Check
 - Commit to complete a Master's Degree or Certification in Special Education
 - Must submit an application to the State Department of Education. Candidates must then complete a 150-hour program that includes 120 hours of special education training known as “Boot Camp” plus 30 hours of field experience.

Boot Camp #s

- July 1, 2015 – Upcoming January 2016
- Summer Special Session – 18
- Sept. 2015 – 36
- January 2016 – 28
- May 2016 – 22 (13 dropped)

Total = 104

- **Grand Total = 367 (2012-2015)**

Boot Camp – General Education

- This course will assist certified general education teachers prepare for the OSAT and classroom teaching responsibilities within a special education setting.
- Opened May 2016; 8 participants to date

Professional Development Activities/Proposals 2016-17

- **In the Loop** – Regional meetings with Admin, Sped Teachers, Parents on specific topics (2x a year)
- **Teacher Recruitment (proposed)** – Reimbursement for passing the OSAT for tests 029 (Mild/Moderate) and 031 (Severe/Profound),
- **Teacher Retention (proposed)** – One time stipend for college hours (3 options: A-By area of the state; B-By area of Need; and C-By Disability Need)
- **First Year Academy** – For first year principals and special education teachers. Training and/or mentoring conducted twice a year (Fall and Spring) including instructional materials and resources.

Local PD Requests to Date

- Data
- DLM and OAAP
- Co-Teaching
- Behavior/Behavior Intervention Plans
- Autism
- Tourette Syndrome
- OK EdPlan

On-line Professional Development

- Professional development modules
- <http://sde.ok.gov/sde/professional-development-directory>
- [Academic Interventions](#)
- [Accommodations](#)
- [Alternate Assessments](#)
- [Assistive Technology](#)
- [Early Childhood](#)
- [Secondary Transition](#)
- [Special Education 101](#)-in revision
- [Special Education Policies, Handbook and Process Guide](#)
- [Universal Design for Learning \(UDL\)](#)
- More pending.....

IDEA B State Advisory Panel

- The IDEA requires that each state establish and maintain an advisory panel.
- Functions:
 - Advise the state of unmet needs in the education of children with disabilities.
 - Comment publicly on any rules or regulations proposed by the state regarding the education of children with disabilities.
 - Provide advice to the state staff in developing evaluations and reporting on data.
 - Advise the state in developing corrective action plans to address findings identified in federal monitoring.
 - Advise the state in developing and implementing policies relating to the coordination of services for children with disabilities.
 - Review all final due process hearing officer findings and decisions.

IDEA B State Advisory Panel

- Revising Guidelines
- Recruiting Panel Members
- Developing Sub-Committees
 - OAAP Advisory
 - Handbook Review
 - Autism
 - Dyslexia
 - Related Services
 - etc

Conflict Resolution

- Oklahoma Special Education Resolution Center
- [Stakeholder Training](#)
- Essential Skills for Engaging Conflict: Six Conversations in Support of Effective Collaboration
 - Designed for Oklahoma schools and staff to improve their ability to work together and achieve a range of goals and objectives in improving student learning.
 - Each module includes a guide and a video to be used to help facilitate groups who may use the series in professional development settings

Questions?

Todd P. Loftin

Interim Executive Director

Special Education Services

Oklahoma State Department of Education

2500 N. Lincoln Boulevard, Suite 510

Oklahoma City, OK 73105

Phone: 405-522-3237