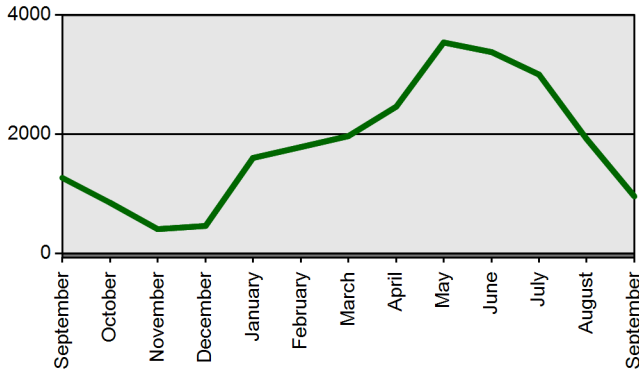


TEACHER CERTIFICATION PRODUCTION REPORT

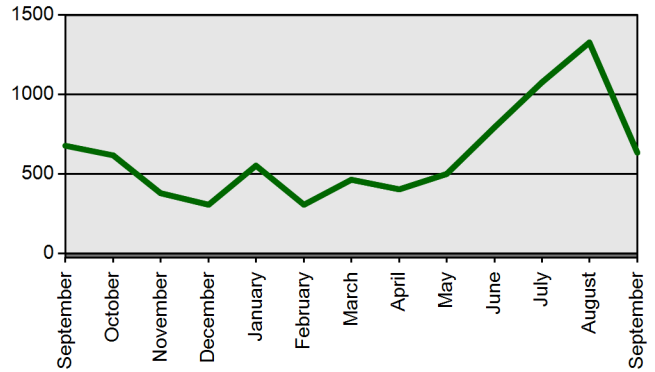
State Board of Education Meeting Tuesday, October 29, 2013

	Current Total	Previous Total
	Sep 1 2013-Sep 30 2013	Sep 1 2012-Sep 30 2012
Certificates Printed	1013	1323
Applications Received	1200	1001
Advisement Letters	792	816
Scanned Documents	6406	5224
Fingerprints	3441	3076
Walk-ins	652	699

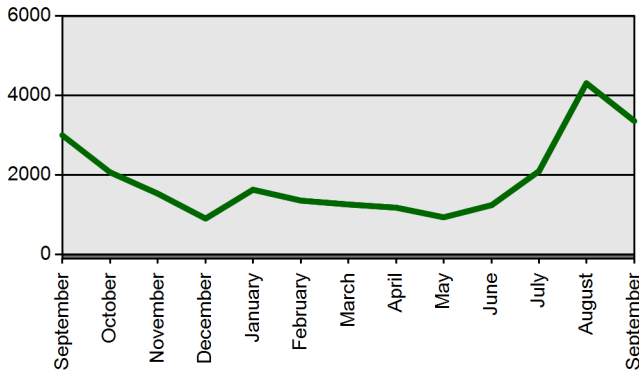
Certificates Printed



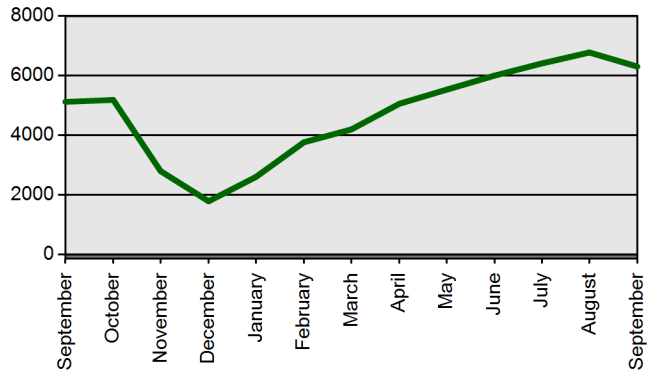
Walk-ins



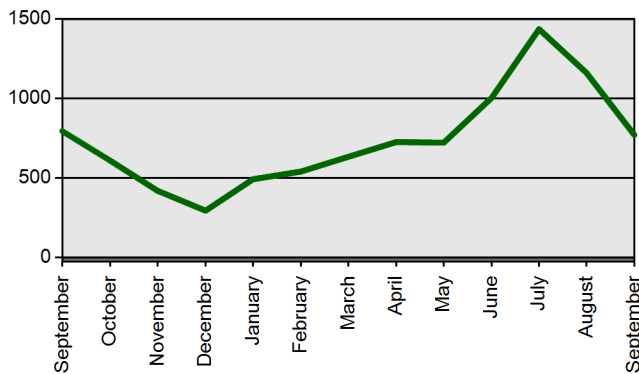
Fingerprints



Scanned Documents



Advisement Letters



Applications Received (Online & Total)

