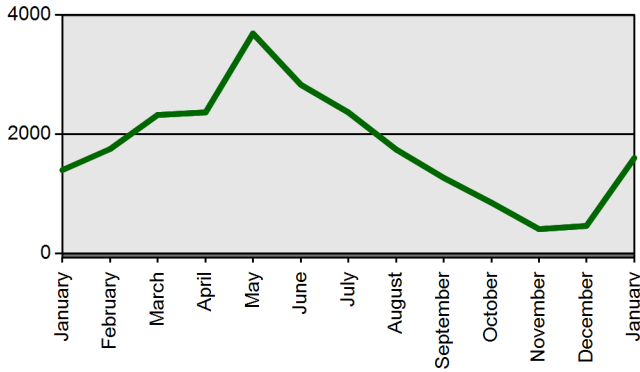


# TEACHER CERTIFICATION PRODUCTION REPORT

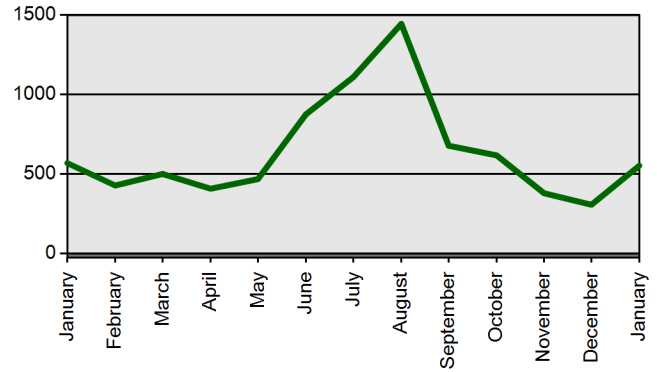
State Board of Education Meeting Thursday, February 28, 2013

	Current Total	Previous Total
	Jan 1 2013-Jan 31 2013	Jan 1 2012-Jan 31 2012
<b>Certificates Printed</b>	1657	1450
<b>Applications Received</b>	1966	2007
<b>Advisement Letters</b>	513	504
<b>Scanned Documents</b>	2707	7633
<b>Fingerprints</b>	1710	2086
<b>Walk-ins</b>	571	590

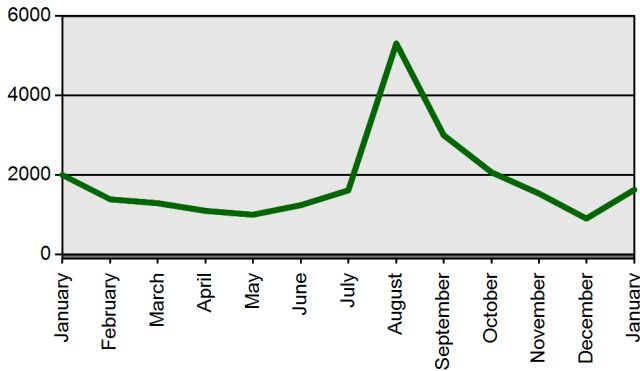
**Certificates Printed**



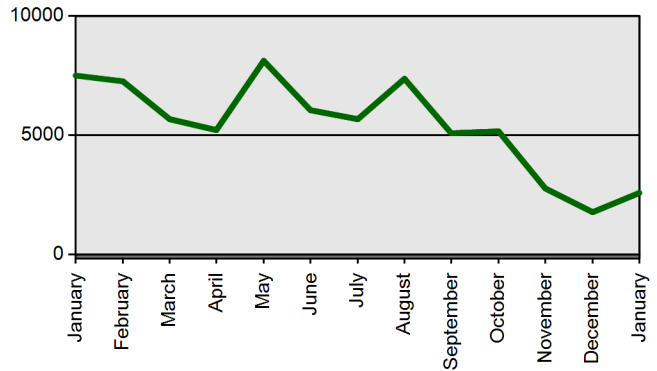
**Walk-ins**



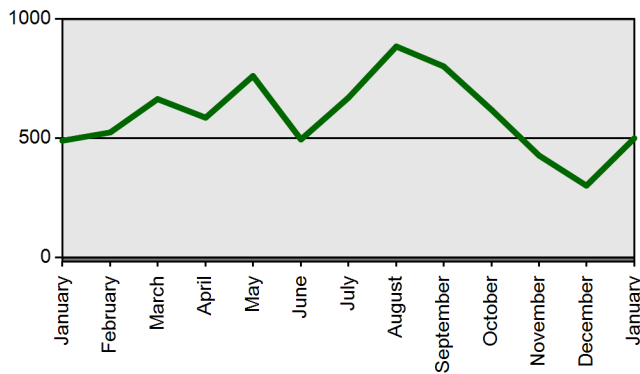
**Fingerprints**



**Scanned Documents**



**Advisement Letters**



**Applications Received (Online & Total)**

